

Quantitative CT Analysis of Small Airway Remodeling in Patients with Chronic Obstructive Pulmonary Disease by a New Image Post-Processing System [Corrigendum]

Qin S, Yu X, Ma Q, et al. *Int J Chron Obstruct Pulmon Dis*. 2021;16:535–544. <https://doi.org/10.2147/COPD.S295320>

After publication, concerns have been raised by a third party regarding [Figure 3](#) on page 540 of the published article. Due to an error that occurred inadvertently at the time of figure assembly there is a duplicate image panel in [Figure 3A](#) which is intended to depict the general trend of airway remodeling across different COPD severities. The incorrect image representative of SAD 5th has now been replaced with the correct image.

This correction does not affect the results or conclusions of the article. The authors apologize for this oversight and appreciate the opportunity to correct the error. The correct [Figure 3](#) is shown below.



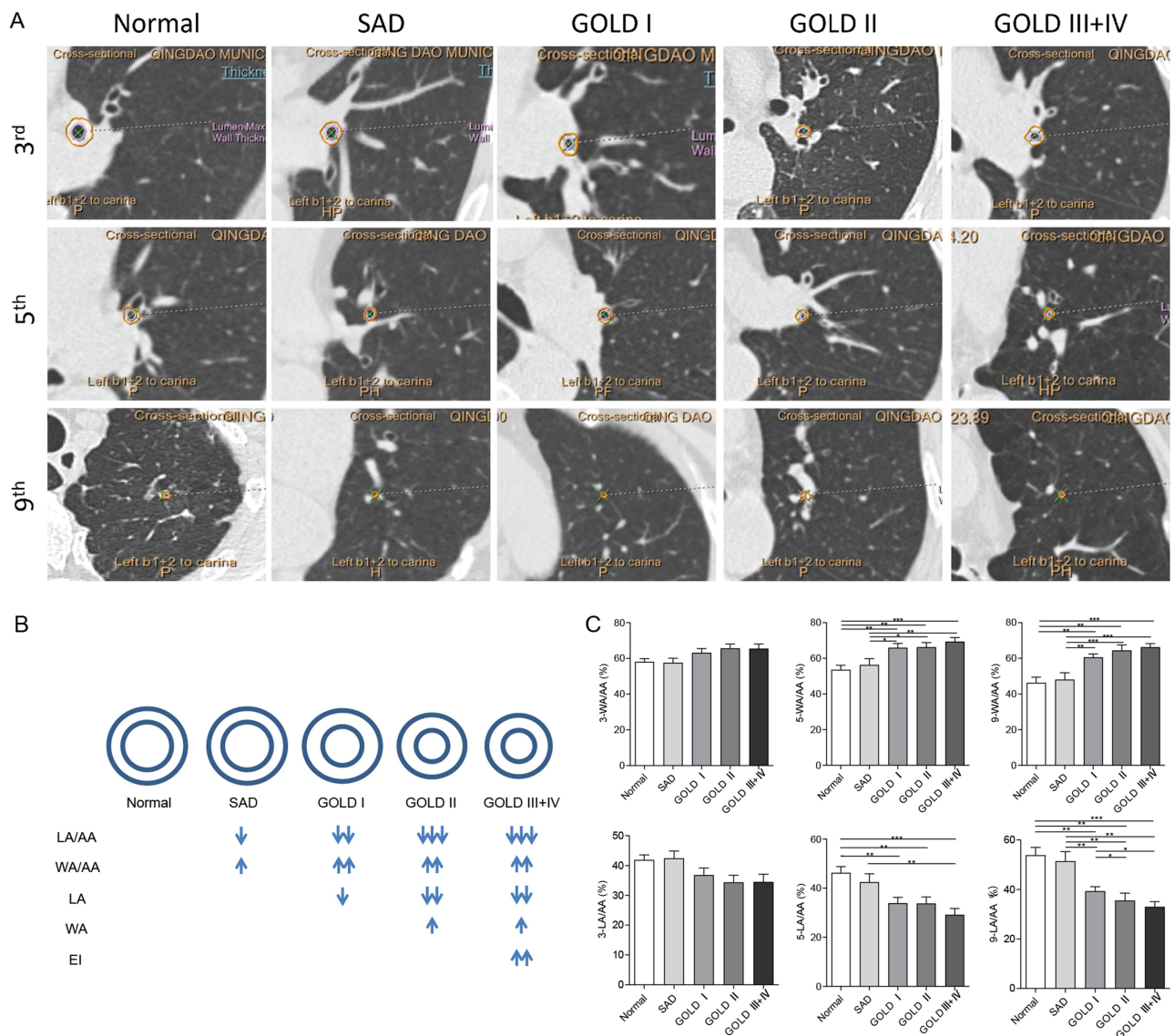


Figure 3 Airway dimensions and their relationship with different groups. **(A)** Cross-sections of different generations in different groups. **(B)** Schematic diagram of airway remodeling in 9th generation. **(C)** Comparison of WA/AA and LA/AA among different groups.

Notes: Data are shown as mean ± SD. * $p < 0.05$; ** $p < 0.01$; *** $p < 0.001$.

Abbreviations: SAD, small airway disease; GOLD, Global Initiative for Chronic Obstructive Pulmonary Disease; WA, wall area; LA, lumen area; AA, airway area; WA/AA, wall area/airway area; LA/AA, lumen area/airway area; 3-, 5-, 9-, represented the 3rd, 5th, 9th generations, respectively.