

The Correlation Between Macular Vessel Density and Its Clinical Parameters in Diabetes Mellitus Type 2 [Corrigendum]

Dewi NA, Arfan M, Rahmasari H, Putri MK, Rosandi R. *Clin Ophthalmol.* 2025;19:3113–3120.

The authors have advised there are presentation errors in the axes for [Figure 2](#) on page 3116 and [Figure 7](#) on page 3117.

The updated [Figures 2 and 7](#) should read as follows.

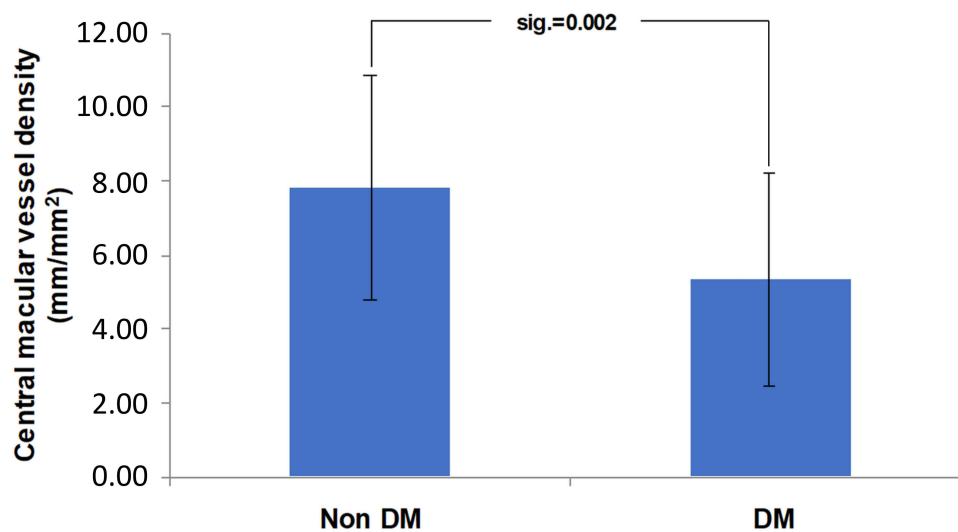


Figure 2 Central macular vessel density in DM significantly lower than non DM ($p = 0.002$).

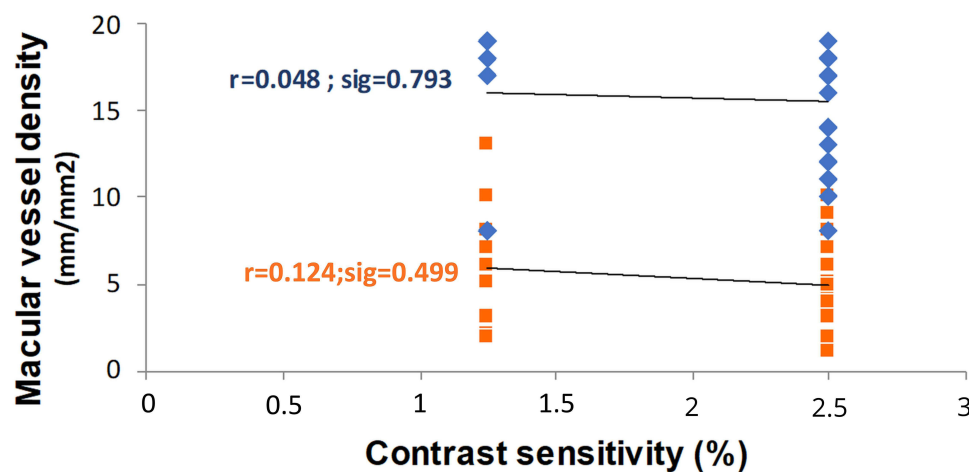


Figure 7 There is no correlation whether between central macular vessel density (Orange square) ($p = 0.499$), whole macular vessel density (diamond shape) ($p = 0.793$), and contrast sensitivity.

Clinical Ophthalmology downloaded from <https://www.dovepress.com/> For personal use only.

The authors apologize for these errors.

Clinical Ophthalmology

Publish your work in this journal

Clinical Ophthalmology is an international, peer-reviewed journal covering all subspecialties within ophthalmology. Key topics include: Optometry; Visual science; Pharmacology and drug therapy in eye diseases; Basic Sciences; Primary and Secondary eye care; Patient Safety and Quality of Care Improvements. This journal is indexed on PubMed Central and CAS, and is the official journal of The Society of Clinical Ophthalmology (SCO). The manuscript management system is completely online and includes a very quick and fair peer-review system, which is all easy to use. Visit <http://www.dovepress.com/testimonials.php> to read real quotes from published authors.

Submit your manuscript here: <https://www.dovepress.com/clinical-ophthalmology-journal>

Dovepress

Taylor & Francis Group

<https://doi.org/10.2147/OPTH.S573286>