


# A Commentary on “Clinical Efficacy of Tuina Therapy for Acute Lumbar Sprain: A Bayesian Network Meta- Analysis Based on Randomized Controlled Trials” [Response to Letter]

Jing Chen <sup>1-4</sup>, Wu Li<sup>1,4</sup>, Jiangshan Li<sup>1,4</sup>

<sup>1</sup>School of Acupuncture, Tuina and Rehabilitation, Hunan University of Chinese Medicine, Changsha, Hunan, People's Republic of China; <sup>2</sup>College of Medical Imaging Laboratory and Rehabilitation, Xiangnan University, Chenzhou, Hunan, People's Republic of China; <sup>3</sup>Department of Rehabilitation Medicine, The Affiliated Hospital of Xiangnan University, Chenzhou, Hunan, People's Republic of China; <sup>4</sup>Department of Acupuncture, Tuina and Rehabilitation, The Second Affiliated Hospital of Hunan University of Chinese Medicine, Changsha, Hunan, People's Republic of China

Correspondence: Jiangshan Li; Wu Li, School of Acupuncture, Tuina and Rehabilitation, Hunan University of Chinese Medicine, No. 300, Xueshi Road, Yuelu District, Changsha, Hunan Province, 410208, People's Republic of China, Tel +86 13707315642; +86 13574851647, Fax +8673188458187, Email 292463008@qq.com; 272434694@qq.com

## Dear editor

We express our profound gratitude for the insightful feedback provided by our peers following the publication of our article. We also appreciate the opportunity to respond to these comments. Our responses are outlined as follows:

1. Concerning the initial inquiry, we utilized the standard flowchart template available on the PRISMA website<sup>1</sup> to construct [Figure 1](#) in our paper, which depicts the literature screening process. We erroneously assumed that the structure of this flowchart was immutable. Consequently, we adhered strictly to the template's structure in our current study. However, the template was relatively simplistic and inadequate for capturing the complexity of our literature screening process. This reliance on the template resulted in an incomplete representation of the literature screening process in [Figure 1](#) of our paper. Conversely, due to variations in cultural backgrounds and linguistic environments, misunderstandings arose concerning the terminology and logic architecture used in the flowchart template. The aforementioned reasons contributed to the issue previously discussed.

We have meticulously re-evaluated the literature screening process. Importantly, this issue does not affect the final inclusion of the literature nor does it impact the overall research findings of our study. To enhance clarity, we have developed a more detailed and comprehensive flowchart for your review. Details are as follows:

2. With respect to the second inquiry, we express our gratitude for your feedback. Due to constraints in time and human resources, we were unable to conduct further subgroup analyses. We are committed to addressing this in future work and hope to have the opportunity to publish our findings again.

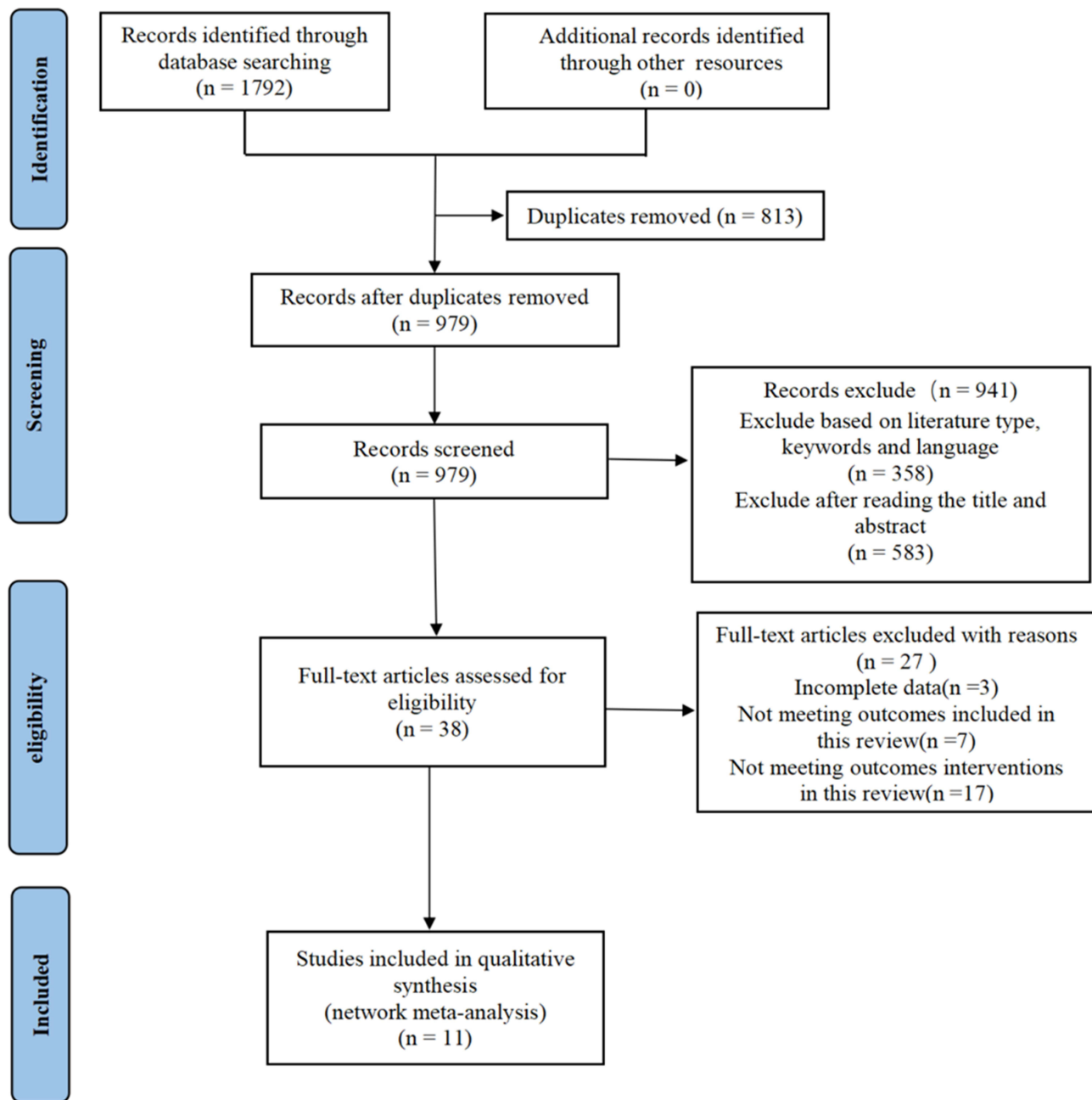


Figure 1 Literature screening process.

## Disclosure

The authors report no conflicts of interest in this communication.

## Reference

1. Prisma Statement. PRISMA 2020 flow diagram-PRISMA statement. Available from: <https://www.prisma-statement.org/prisma-2020-flow-diagram>. Accessed March 12, 2025.

Dove Medical Press encourages responsible, free and frank academic debate. The content of the Journal of Pain Research 'letters to the editor' section does not necessarily represent the views of Dove Medical Press, its officers, agents, employees, related entities or the Journal of Pain Research editors. While all reasonable steps have been taken to confirm the content of each letter, Dove Medical Press accepts no liability in respect of the content of any letter, nor is it responsible for the content and accuracy of any letter to the editor.

## Journal of Pain Research

### Publish your work in this journal

The Journal of Pain Research is an international, peer reviewed, open access, online journal that welcomes laboratory and clinical findings in the fields of pain research and the prevention and management of pain. Original research, reviews, symposium reports, hypothesis formation and commentaries are all considered for publication. The manuscript management system is completely online and includes a very quick and fair peer-review system, which is all easy to use. Visit <http://www.dovepress.com/testimonials.php> to read real quotes from published authors.

Submit your manuscript here: <https://www.dovepress.com/journal-of-pain-research-journal>

**Dovepress**  
Taylor & Francis Group