

Impact of Baseline Lung Function on Future Exacerbations in Patients with Moderate-to-Severe Asthma

Asif H Khan¹*, Cori Gray^{2,*}, Laurent Eckert¹, Caroline Amand¹, Jaman Maroni³, Zhixiao Wang³, Bethan Jones⁴, Thomas Berni⁴, Christopher LI Morgan⁴, Paul J Rowe⁵

¹Sanofi, Chilly-Mazarin, France; ²Sanofi, Cambridge, MA, USA; ³Regeneron Pharmaceuticals Inc, Tarrytown, NY, USA; ⁴Pharmatelligence, Cardiff, UK; ⁵Sanofi, Bridgewater, NJ, USA

*These authors contributed equally to this work

Correspondence: Asif H Khan, Sanofi, 1 Avenue Pierre Brossolette, Chilly-Mazarin, France, 91385, Tel +33160495076, Email Asif.Khan@sanofi.com

Introduction

Asthma is a chronic inflammatory disease characterized by reversible and variable expiratory airflow obstruction.¹ It is well known that abnormalities of airway structure and hyperresponsiveness contribute to impaired lung function.² Airway remodeling and hyperinflation are also associated with accelerated decline in lung function.³ In addition, severe asthma exacerbations are correlated with a rapid decline in lung function and reduction in airway reversibility, leading to the progression of irreversible airflow limitation over time.⁴ Although reduced lung function is associated with worsened outcomes and increased mortality risk,^{5,6} limited real-world evidence exists on the effect of forced expiratory volume in 1 second percent predicted (FEV_{1pp}) on exacerbations in patients with moderate-to-severe asthma.^{7,8} In this retrospective database study, we aimed to determine the baseline distribution of FEV_{1pp} in patients with moderate-to-severe asthma and the association between baseline FEV_{1pp} and risk of severe asthma exacerbations in a large UK dataset.

Methods

Study Design

This retrospective cohort study was performed using the Clinical Practice Research Datalink (CPRD) database linked to Hospital Episode Statistics inpatient, outpatient and accident and emergency data. The CPRD is an anonymized, longitudinal research database that derived data from nearly 700 primary-care practices in the UK when this study was conducted and provided healthcare data of 60 million patients.⁹ Patients were identified from 1st January 2010 to 31st December 2012 and followed up for 36 months from the index date. The index date was defined as the date of the first asthma medication prescription during the study period. A variable-length period from the registration date of patients (from up-to-standard CPRD practices) in the database to the index date was identified as a pre-index baseline period and was used to capture comorbidities.

Patients

Patients aged ≥ 18 years at the index date, with ICD-10¹⁰ clinical diagnosis and Read codes for asthma were identified. Patients with a diagnosis of COPD were excluded. Asthma severity (moderate-to-severe) was determined using the prescription criteria consistent with the British Thoracic Society (BTS) 2011 guideline Steps 3–5 (medium-high dose inhaled corticosteroid [ICS] and long-acting β -agonist plus additional controller medications or oral corticosteroids [OCS], as needed for asthma control).¹¹

Outcomes

Baseline FEV₁ values were taken as the observation nearest to the index date within ± 180 days. Observed FEV₁ values were compared with the normal range accounting for age, gender and height and were categorized as Group 1: FEV_{1pp} $\geq 80\%$; Group 2: FEV_{1pp} 50–79%; Group 3: FEV_{1pp} $< 50\%$. The FEV_{1pp} values could be either pre- or post-bronchodilator FEV₁. Exacerbations in the year prior to the index date were considered as baseline. Severe asthma exacerbations during the follow-up period were identified by an acute course of OCS for < 7 days or an asthma-related emergency hospital contact (A&E diagnosis code 251) or inpatient admission with a primary diagnosis (ICD10 J45, J45.0, J45.1, J45.8, and J45.9) in non-OCS-dependent patients. For OCS-dependent patients (BTS step 5), a severe exacerbation was defined as above but without the criteria for an acute course of OCS use.

Statistical Analysis

Descriptive statistics were used to analyze baseline demographics and clinical characteristics. Univariate analyses were compared using *t*-test and chi-squared tests for continuous data and categorical variables, respectively. Multivariable regression models were used to estimate the risk of severe asthma exacerbations after adjusting for covariates, including age at the index date, smoking, body mass index, gender, rhinitis, presence of chronic sinusitis, nasal polyps, atopic dermatitis, diabetes, anaphylaxis, ischemic heart disease, heart failure, food allergy, anxiety, depression, and psoriasis. The incident rate ratio (IRR) for severe asthma exacerbation was calculated over the 12 months using the Poisson regression. The Cox proportional hazard model was used to determine hazard ratios (HR) for the risk of severe exacerbation (time-to-first exacerbation) over the 3-year follow-up. Additional sensitivity analyses were performed by adjusting for severe baseline exacerbations as a covariate in addition to the covariates listed above.

Results

Baseline Demographics and Patient Characteristics

Of 36,164 patients identified, 1865 had baseline FEV_{1pp} values reported and were included in this analysis. Mean (SD) age was 47.5 (16.5) years in the overall population and 1130 (60.6%) were women. Based on the FEV_{1pp} values, 1106 (59.3%) patients were categorized in Group 1 (FEV_{1pp} $\geq 80\%$), 644 (34.5%) in Group 2 (FEV_{1pp} 50–79%) and 115 (6.2%) in Group 3 (FEV_{1pp} $< 50\%$). Baseline FEV_{1pp} measurements occurred within approximately 50 days of the index date. The average pre-index date baseline period, when comorbidities were captured, was 8 years. The number of patients on BTS Step 5 were 83 (7.5%) in Group 1, 58 (9.0%) in Group 2, and 22 (19.1%) in Group 3. Baseline demographics and patient characteristics are described in [Table 1](#).

Exacerbations

Rates of severe asthma exacerbations over 12 months in patients in Groups 1–3, and in patients with ≥ 1 severe asthma exacerbation at baseline in these groups are presented in [Figure 1](#).

The annual IRR of severe exacerbations was significantly higher for Group 2 (1.46 [1.27 to 1.68]; $P < 0.0001$) and 3 (2.03 [1.59 to 2.54]; $P < 0.0001$) versus Group 1 ([Figure 2](#)) over 12 months following index date. The risk of severe asthma exacerbation was significantly greater in patients in Group 2 ($P = 0.0018$) and 3 ($P < 0.0001$), compared with those in Group 1 during the 36-month follow-up period ([Figure 2](#)). In sensitivity analysis, similar results were observed after adjusting for baseline severe exacerbations. The annual IRR of severe exacerbation was significantly higher for Group 2 (1.61 [1.27 to 2.05]; $P < 0.0001$) and 3 (1.78 [1.22 to 2.54]; $P = 0.0029$) versus Group 1; however the risk of severe exacerbation was significantly greater for Group 3 versus Group 1 (1.45 [1.04 to 2.03]; $P = 0.0308$) but not for Group 2 (1.11 [0.91 to 1.34]; $P = 0.3011$).

Discussion

In asthma, permanent structural changes in the airway can lead to a progressive loss of lung function, increasing airflow obstruction.¹² These structural changes can include subepithelial fibrosis (thickening of the membrane), airway smooth muscle hypertrophy and hyperplasia. Clinically, decreased lung function can result in reduced treatment efficacy, is

Table I Baseline Demographics and Patient Characteristics

Characteristic	Group 1 (FEV _{1pp} ≥ 80%) (N = 1106)	Group 2 (FEV _{1pp} 50–79%) (N = 644)	Group 3 (FEV _{1pp} < 50%) (N = 115)	Overall Population (N = 1865)
Age (years), mean ± SD	48.5 ± 15.7	46.2 ± 17.5	45.0 ± 17.7	47.5 ± 16.5
Women	736 (66.5%)	341 (53.0%)	53 (46.1%)	1130 (60.6%)
BMI (kg/m ²), mean ± SD	29.5 ± 6.7	29.7 ± 7.0	29.4 ± 7.0	29.6 ± 6.8
Prior smoking	401 (36.3%)	203 (31.5%)	36 (31.3%)	640 (30.3%)
FEV _{1pp} , mean ± SD	95.6 ± 10.9	68.2 ± 8.2	40.8 ± 7.3	82.7 ± 19.3
Average number of severe exacerbations in the year before index date	0.36	0.47	0.50	0.41
Comorbidities				
Eczema	337 (30.5%)	203 (31.5%)	31 (27.0%)	571 (30.6%)
Nasal polyps	29 (2.6%)	30 (4.7%)	4 (3.5%)	63 (3.4%)
Rhinitis	229 (20.7%)	120 (18.6%)	21 (18.3%)	370 (19.8%)

Note: Data presented as n (%), unless otherwise specified.

Abbreviations: BMI, body mass index; FEV_{1pp}, forced expiratory volume in 1 second % predicted; SD, standard deviation.

associated with poor asthma control, and lower health-related quality of life, and is a more reliable indicator of exacerbation severity^{13–15} than symptoms.¹

We report the prevalence of impaired lung function in a population cohort representative of patients with moderate-to-severe asthma treated in the UK. Although lung function assessment is recommended for diagnosis¹ and periodically after that in asthma, we found that only about 5% of the patients in this cohort had FEV₁ recorded, showing low

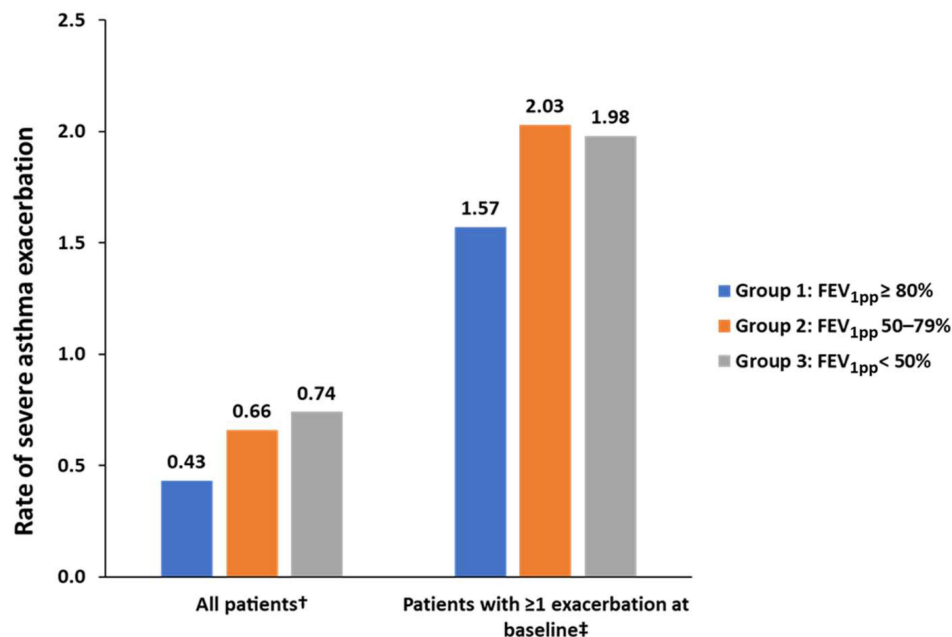


Figure 1 Rates of severe asthma exacerbations over 12 months in patients with moderate-to-severe asthma, categorized by baseline FEV_{1pp} values. †Group 1, N = 1106; Group 2, N = 644; Group 3, N = 115. ‡Group 1, N = 302; Group 2, N = 209; Group 3, N = 43.

Abbreviation: FEV_{1pp}, forced expiratory volume in 1 second % predicted.

A IRR for severe exacerbations over 12 months

	N	IRR (95% CI); <i>P</i> -value
Group 1 (FEV _{1pp} ≥ 80%)	1106	1.00 [reference]
Group 2 (FEV _{1pp} 50–79%)	644	1.46 (1.27 to 1.68); <i>P</i> < 0.0001
Group 3 (FEV _{1pp} < 50%)	115	2.03 (1.59 to 2.54); <i>P</i> < 0.0001

B HR for risk (time-to-first) of severe exacerbation over 36 month

	N	HR (95% CI); <i>P</i> -value
Group 1 (FEV _{1pp} ≥ 80%)	1106	1.00 [reference]
Group 2 (FEV _{1pp} 50–79%)	644	1.19 (1.07 to 1.33); <i>P</i> = 0.0018
Group 3 (FEV _{1pp} < 50%)	115	1.59 (1.29 to 1.95); <i>P</i> < 0.0001

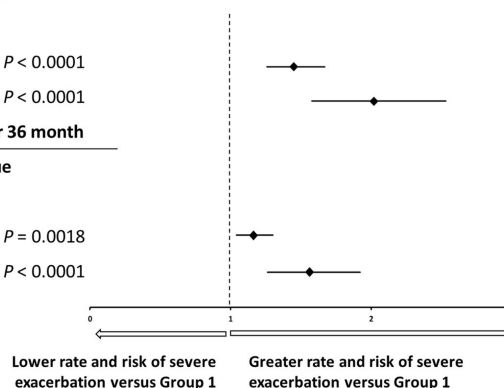


Figure 2 (A) Incident rate ratio over 12 months and **(B)** hazard ratio for risk of severe exacerbation over 36 months in patients with moderate-to-severe asthma, categorized by baseline FEV_{1pp} values. *P*-value for Group 2 and 3 were evaluated versus Group 1. Adjusted for age at the index date, smoking status, BMI, gender, rhinitis, chronic sinusitis, nasal polyps, atopic dermatitis, diabetes, anaphylaxis, ischemic heart disease, heart failure, food allergy, anxiety, depression, and psoriasis. Patients without a baseline % predicted FEV₁ measurement were included in the analysis as a categorical variable.

Abbreviations: CI, confidence interval; FEV_{1pp}, forced expiratory volume in 1 second % predicted; HR, hazard ratio; IRR, incident rate ratio, N, number of patients.

utilization at the primary health care level. Indeed, in a discussion on the national review of asthma deaths,¹⁶ one of the recommendations to reduce the mortality rate due to asthma was a routine measurement of lung function.¹⁷

FEV_{1pp} allows for the comparison of the functional measure of lung function with a population. In the current analysis, ~40% of patients had impaired lung function with FEV_{1pp} <80% (FEV_{1pp} 50–79%, 34.5%; FEV_{1pp} < 50%, 6.2%), while the remaining patients experienced mild airflow obstruction (FEV_{1pp} ≥ 80%). Although asthma severity cannot be described by FEV_{1pp} alone, it is a marker of disease severity that can be measured objectively and is reproducible.^{1,18} In this analysis, 6.2% of the patients had severely impaired lung function with FEV_{1pp} < 50% despite treatment with a standard-of-care therapy. We did not assess specialist referrals for these patients; however, this highlights the unmet needs in some patients with moderate-to-severe asthma.

Further, during the follow-up period, we observed that the patients with low FEV_{1pp} had increased exacerbation rates and a higher risk of severe exacerbations over the 36-month follow-up, which were about 20% and 60% greater, respectively, in patients in Group 2 (FEV_{1pp} 50–79%) and Group 3 (FEV_{1pp} <50%), compared with Group 1 (FEV_{1pp} ≥80%), respectively. Data from this analysis were in line with previous findings, wherein lower FEV_{1pp} values were associated with an increased risk of severe asthma exacerbations.^{5,19–21} Assessment of the risk of future exacerbations is an important aspect in the clinical management of asthma, and FEV_{1pp} values at baseline can be a reliable predictor of future risks and guide treatment.

In Groups 1–3, severe exacerbations were even higher in patients with ≥1 severe asthma exacerbation at baseline than in the overall population; a formal statistical analysis was not performed to evaluate these differences. This is consistent with published evidence suggesting prior severe exacerbation as a predictor of future severe exacerbations.²² Exacerbations represent a change in lung function or asthma symptoms. Severe exacerbations can occur in patients with well-controlled or mild asthma symptoms²³ and can be life-threatening.

There are a few limitations that should be considered. Lung function measurement (FEV_{1pp}) could be biased as only patients with moderate-to-severe asthma were assessed. The current analysis compares the rate and risk of exacerbations in patients with impaired lung function versus those with mild airflow limitation to evaluate the impact of FEV_{1pp} values on exacerbations. Accordingly, a comparison between Group 2 and 3 was out of the scope of this analysis. Further, severe exacerbations were identified by either an acute course of OCS use or asthma-related emergency room or hospital admission in this analysis. For OCS-dependent patients (BTS step 5), an acute course of OCS was not one of the criteria. However, given the low proportion (8.7%) of patients in BTS step 5, this might not impact the overall findings from this analysis. In addition, an analysis combining spirometry and biomarkers at baseline could provide additional predictive value in identifying patients with a greater exacerbation risk.

Conclusion

Lung function is an important parameter in asthma control; however, as reported in this analysis, only a few patients have this assessed in clinical practice. The data from this analysis showed that low FEV_{1pp} is a significant predictor of increased rate and greater risk of severe asthma exacerbations. Lung function in asthma typically declines over time, contributing to an increased risk of exacerbations and further impairment of asthma control. Therefore, it is important to assess lung function in patients with asthma to optimize treatment options in patients with low lung function to improve patient outcomes, including asthma control.

Data Sharing Statement

The datasets used and/or analysed during the current analysis are available from the corresponding author on reasonable request.

Ethics Approval

This study is based in part on data from the Clinical Practice Research Datalink (CPRD) obtained under license from the UK Medicines and Healthcare products Regulatory Agency. The anonymized data are provided by patients and collected by the NHS as part of their care and support. The interpretation and conclusions contained in this study are those of the author/s alone. The CPRD has ethics approval from the Health Research Authority to support research using anonymized patient data. This study received protocol approval (ISAC 17_077) from the CPRD Independent Scientific Advisory Committee. The study was conducted in accordance with the principles of the Declaration of Helsinki.

Acknowledgments

The research was sponsored by Sanofi and Regeneron Pharmaceuticals, Inc. Medical writing/editorial assistance was provided by Vatsal Vithlani (M.Pharm) and Amit Garg (M.Pharm) of Sanofi, according to the Good Publication Practice guideline.

Author Contributions

All authors contributed to data analysis, drafting, or revising the article, have agreed on the journal to which the article will be submitted, gave final approval of the version to be published, and agree to be accountable for all aspects of the work.

Funding

The study was funded by Sanofi and Regeneron Pharmaceuticals Inc.

Disclosure

Khan AH, Gray C, Eckert L, Amand C and Rowe PJ are employees of Sanofi, may hold stock and/or stock options in the company. Maroni J and Wang Z are employees of Regeneron Pharmaceuticals Inc, may hold stock and/or stock options in the company. Jones B, Berni T and Morgan CL are employees of Pharmatelligence, which was funded by Sanofi to conduct the study. The authors report no other conflicts of interest.

References

1. Global Initiative for Asthma. Global strategy for asthma management and prevention; 2021. Available from: <http://www.ginasthma.org/>. Accessed February 22, 2022.
2. James AL, Palmer LJ, Kicic E, et al. Decline in lung function in the Busselton Health Study: the effects of asthma and cigarette smoking. *Am J Respir Crit Care Med*. 2005;171(2):109–114. doi:10.1164/rccm.200402-230OC
3. Krings JG, Goss CW, Lew D, et al. Quantitative CT metrics are associated with longitudinal lung function decline and future asthma exacerbations: results from SARP-3. *J Allergy Clin Immunol*. 2021;148(3):752–762. doi:10.1016/j.jaci.2021.01.029
4. Matsunaga K, Hirano T, Oka A, et al. Progression of irreversible airflow limitation in asthma: correlation with severe exacerbations. *J Allergy Clin Immunol Pract*. 2015;3(5):759–764 e1. doi:10.1016/j.jaip.2015.05.005
5. Tupper OD, Ulrik CS. Long-term predictors of severe exacerbations and mortality in a cohort of well-characterised adults with asthma. *Respir Res*. 2021;22(1):269. doi:10.1186/s12931-021-01864-z

6. Knuiman MW, James AL, Divitni ML, et al. Lung function, respiratory symptoms, and mortality: results from the Busselton Health Study. *Ann Epidemiol.* 1999;9(5):297–306. doi:10.1016/S1047-2797(98)00066-0
7. Kitch BT, Paltiel AD, Kuntz KM, et al. A single measure of FEV1 is associated with risk of asthma attacks in long-term follow-up. *Chest.* 2004;126(6):1875–1882. doi:10.1378/chest.126.6.1875
8. Hansen EF, Vestbo J, Phanareth K, Kok-Jensen A, Dirksen A. Peak flow as predictor of overall mortality in asthma and chronic obstructive pulmonary disease. *Am J Respir Crit Care Med.* 2001;163(3 Pt 1):690–693. doi:10.1164/ajrcem.163.3.2006120
9. Clinical Practice Research Datalink (CPRD) | UK data driving real-world evidence; 2019. Available from: <https://www.cprd.com/>. Accessed February 15, 2022.
10. World Health Organization. International statistical classification of diseases and related health problems 10th revision; 2010. Available from: <https://icd.who.int/browse10/2010/en#/X>. Accessed February 15, 2022.
11. British Thoracic Society and Scottish Intercollegiate Guidelines Network. British guideline on the management of asthma (101): a national clinical guideline; 2011. Available from: http://globalasthmanetwork.org/management/guides/bosnia_and_herzegovina/British%20guideline%20for%20asthma.pdf. Accessed February 22, 2022.
12. Education National Asthma and Prevention Program. Expert Panel Report 3 (EPR-3): guidelines for the diagnosis and management of asthma-summary report 2007. *J Allergy Clin Immunol.* 2007;120(5 Suppl):S94–S138. doi:10.1016/j.jaci.2007.09.029
13. Fleming L, Murray C, Bansal AT, et al. The burden of severe asthma in childhood and adolescence: results from the paediatric U-BIOPRED cohorts. *Eur Respir J.* 2015;46(5):1322–1333. doi:10.1183/13993003.00780-2015
14. Shaw DE, Sousa AR, Fowler SJ, et al. Clinical and inflammatory characteristics of the European U-BIOPRED adult severe asthma cohort. *Eur Respir J.* 2015;46(5):1308–1321. doi:10.1183/13993003.00779-2015
15. Ilmarinen P, Juboori H, Tuomisto LE, Niemela O, Sintonen H, Kankaanranta H. Effect of asthma control on general health-related quality of life in patients diagnosed with adult-onset asthma. *Sci Rep.* 2019;9(1):16107. doi:10.1038/s41598-019-52361-9
16. Why asthma still kills: the National Review of Asthma Deaths (NRAD) confidential enquiry report. London: Royal College of Physicians; 2014. Available from: <http://www.rcplondon.ac.uk/sites/default/files/why-asthma-still-kills-full-report.pdf>. Accessed March 7, 2022.
17. Levy ML. The national review of asthma deaths: what did we learn and what needs to change? *Breathe.* 2015;11(1):14–24. doi:10.1183/20734735.008914
18. Enright PL, Lebowitz MD, Cockcroft DW. Physiologic measures: pulmonary function tests. Asthma outcome. *Am J Respir Crit Care Med.* 1994;149(2 Pt 2):S9–S18; discussion S19–S20. doi:10.1164/ajrcem/149.2_Pt_2.S9
19. Zeiger RS, Yegin A, Simons FE, et al. Evaluation of the National Heart, Lung, and Blood Institute guidelines impairment domain for classifying asthma control and predicting asthma exacerbations. *Ann Allergy Asthma Immunol.* 2012;108(2):81–87. doi:10.1016/j.anai.2011.12.001
20. Patel M, Pilcher J, Reddel HK, et al. Predictors of severe exacerbations, poor asthma control, and beta-agonist overuse for patients with asthma. *J Allergy Clin Immunol Pract.* 2014;2(6):751–758. doi:10.1016/j.jaip.2014.06.001
21. Papaioannou AI, Kostikas K, Bakakos P, et al. Predictors of future exacerbation risk in patients with asthma. *Postgrad Med.* 2016;128(7):687–692. doi:10.1080/00325481.2016.1220807
22. Chipps BE, Zeiger RS, Borish L, et al. Key findings and clinical implications from The Epidemiology and Natural History of Asthma: outcomes and Treatment Regimens (TENOR) study. *J Allergy Clin Immunol.* 2012;130(2):332–342 e310. doi:10.1016/j.jaci.2012.04.014
23. Reddel H, Ware S, Marks G, Salome C, Jenkins C, Woolcock A. Differences between asthma exacerbations and poor asthma control. *Lancet.* 1999;353(9150):364–369. doi:10.1016/S0140-6736(98)06128-5

Publish your work in this journal

The Journal of Asthma and Allergy is an international, peer-reviewed open-access journal publishing original research, reports, editorials and commentaries on the following topics: Asthma; Pulmonary physiology; Asthma related clinical health; Clinical immunology and the immunological basis of disease; Pharmacological interventions and new therapies. The manuscript management system is completely online and includes a very quick and fair peer-review system, which is all easy to use. Visit <http://www.dovepress.com/testimonials.php> to read real quotes from published authors.

Submit your manuscript here: <https://www.dovepress.com/journal-of-asthma-and-allergy-journal>