

Assessment of Subclinical Deterioration of Right Ventricular Function by Three-Dimensional Speckle Tracking Echocardiography in Breast Cancer Patients Undergoing Anthracycline-Based Chemotherapy [Erratum]

Xu H, Mao L, Liu H, Zhang Y, Yang J. *Int J Gen Med*. 2021;14:885–893.

The authors wish to advise of errors with Figures 2 and 3 on page 891. The Figure 3 image belongs with the Figure 2 caption and the Figure 2 image belongs with the Figure 3 caption. The correct figures and captions are shown below.

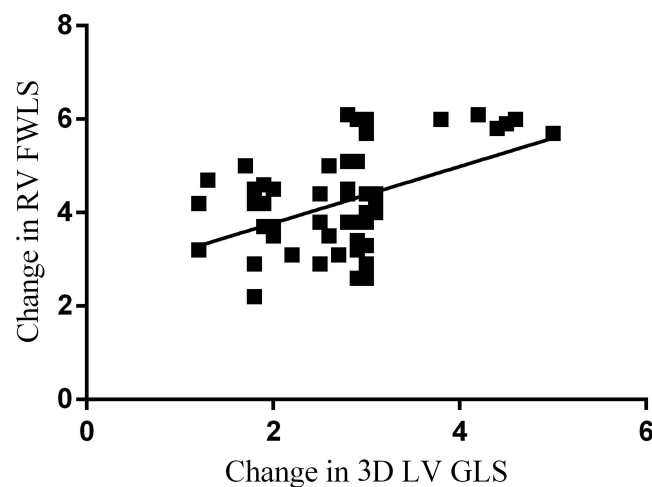


Figure 2 The association between three-dimensional left ventricular global longitudinal strain (3D LV GLS) and three-dimensional right ventricular free wall longitudinal strain (3D RV FWLS).

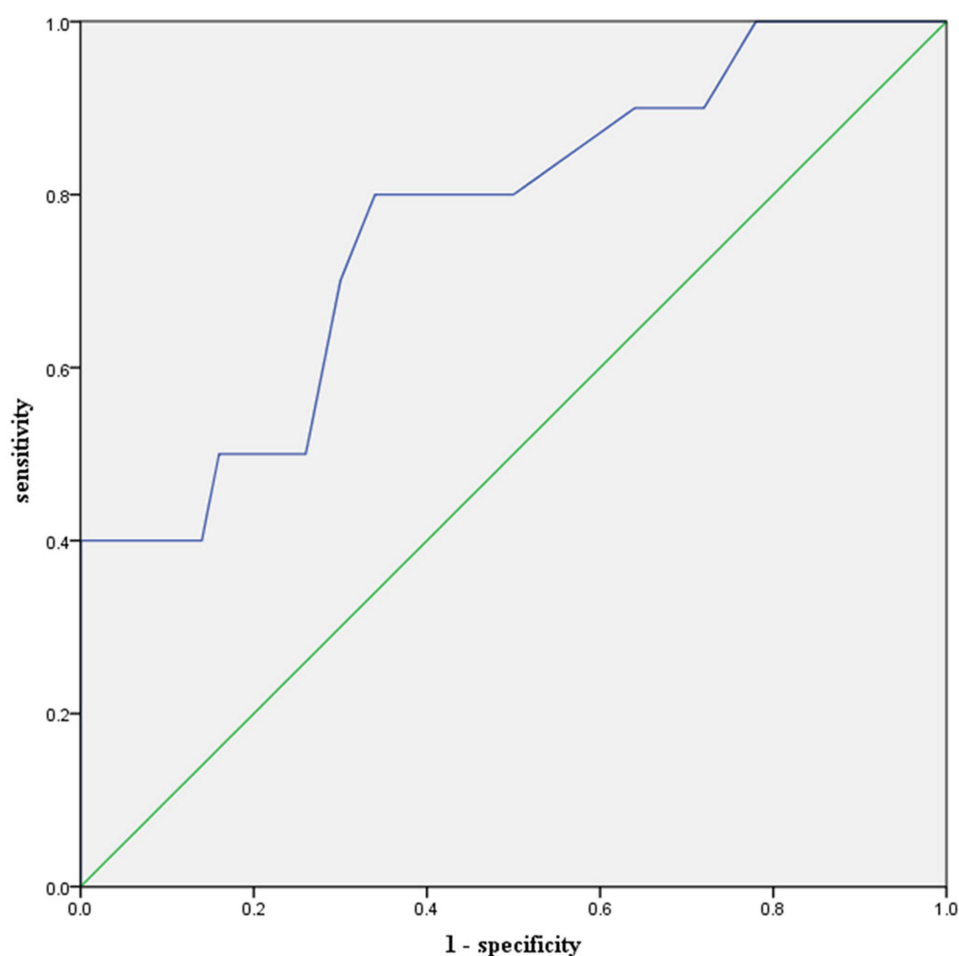


Figure 3 Receiver operating curves of variations of three-dimensional right ventricular free wall longitudinal strain (3D RV FWLS) for predicting subclinical chemotherapy-related cardiac dysfunction (CTRCD), with areas under the curve (AUC) of 0.74, the optimal cutoff values being -17.5% with a sensitivity of 80.5% and a specificity of 65.8%.

International Journal of General Medicine

Dovepress

Publish your work in this journal

The International Journal of General Medicine is an international, peer-reviewed open-access journal that focuses on general and internal medicine, pathogenesis, epidemiology, diagnosis, monitoring and treatment protocols. The journal is characterized by the rapid reporting of reviews, original research and clinical studies across all disease areas. The manuscript management system is completely online and includes a very quick and fair peer-review system, which is all easy to use. Visit <http://www.dovepress.com/testimonials.php> to read real quotes from published authors.

Submit your manuscript here: <https://www.dovepress.com/international-journal-of-general-medicine-journal>

<https://doi.org/10.2147/IJGM.S388270>