


The Quality and Clinical Applicability of Recommendations in Ostomy Guidelines: A Systematic Review

Jiamin Li¹, Qiuwen Zhang², Xinjuan Wu¹, Dong Pang¹ 

¹Department of Nursing, Peking Union Medical College Hospital, Chinese Academy of Medical Sciences & Peking Union Medical College, Beijing, People's Republic of China; ²School of Nursing, Health Science Center for Evidence-Based Nursing, Peking University, Beijing, People's Republic of China

Correspondence: Xinjuan Wu; Dong Pang, Email wuxinjuan@sina.com; pangdong@bjmu.edu.cn

Aim: To systematically search ostomy clinical practice guidelines, critically assess their quality and clinical applicability of recommendations, and summarize the recommendations.

Design: Systematic review.

Data Sources: The PubMed, ProQuest and CINAHL databases, eight guideline databases, and three ostomy institution websites were searched on September 3, 2021.

Review Methods: Appraisal of Guidelines for Research and Evaluation II (AGREE II) and AGREE Recommendation EXcellence (AGREE-REX) were used to assess the guideline.

Results: The initial search identified 1475 documents. Of these, 27 full-text documents were reviewed. Finally, 10 guidelines were included. Among these, the 2019 Registered Nurses' Association of Ontario (RNAO) guidelines had the highest total scores using AGREE II and AGREE-REX. The 2019 National Institute for Health and Care Excellence (NICE) and 2018 European Hernia Society (EHS) were also ranked as high-quality and evaluated as "recommended." The median of the "applicability" domain was the lowest (45%) among the six AGREE II domains. The median of the "values and preferences" domain was the lowest (38%) among the three AGREE-REX domains. In total, 172 recommendations were summarized and parastomal hernia received the most attention among the recommendations.

Conclusion: The quality of the 10 clinical practice guidelines varied widely. The three identified high-quality guidelines might be appropriate first choices in daily ostomy care and management practice and can be tailored to the local context. Ostomy guidelines require further improvement in the "applicability" and "values and preferences" domains.

No Patient or Public Contribution: This review only searched and evaluated relevant documents, so such details do not apply to this review.

Keywords: clinical practice guidelines, ostomy, quality appraisal, clinical applicability, systematic review

Plain Language Summary

Impact

- What problem did the study address?

Despite rapid development of ostomy guidelines in a wide range of institutions and locations, the diversity of settings, objectives, intended users, inclusion criteria, and methods for collecting and analyzing evidence are linked to differences in the methodological quality of clinical practice guidelines. The current review assessed the quality and clinical applicability of ostomy guidelines.

- What were the main findings?

Although the quality of ostomy guidelines varied, we identified three high-quality guidelines. Most ostomy guidelines gave little consideration to applicability or to the values and preferences of patients, policymakers and intended users. The development of more

high-quality guidelines and more clinical applicability guidelines is required. Ostomy-related complications, especially parastomal hernias, are addressed by most ostomy guidelines. Pediatric ostomy care needs more research attention. Intended user of guidelines for patient needs to be developed.

- Where and on whom will the research have impact?

This review will help guideline developers to improve the quality of ostomy guidelines in the future, and help ostomy nurses/clinicians select and implement better ostomy clinical practice guidelines.

Introduction

An ostomy is a surgically constructed abdominal wall opening that allows feces and urine to be drained outside the body.¹ Internationally, 1.3 million individuals are estimated to have an ostomy.² The construction of an ostomy is a life-altering event that affects many areas of health-related quality of life.³ Despite the many challenges involved, it is feasible for people to have active and fulfilling lives following ostomy surgery if the necessary services and assistance are available. To standardize care and to help practitioners make healthcare decisions for the management of medical concerns, many clinical practice guidelines (CPGs) have been developed in recent years. Although implementing the recommendations of ostomy CPGs can help to decrease stoma-related complications and enhance overall health-related quality of life,^{4–6} not all CPGs have rigorous methodologies. Low-quality CPGs can result in ineffective or even harmful practices and poor patient outcomes. However, no comprehensive and rigorous evaluations of ostomy CPGs and their recommendations have been conducted. The Appraisal of Guidelines for Research and Evaluation II (AGREE II)⁷ and the AGREE Recommendation EXcellence (AGREE-REX)⁸ are methodological tools for assessing the quality of guidelines and clinical applicability of recommendations, and are commonly used internationally. Therefore, it is necessary to evaluate ostomy CPGs using these two tools to help ostomy nurses/clinicians select and implement better ostomy CPGs. In addition, it is necessary to provide guidance for the development of higher-quality guidelines in the future.

Background

Ostomy is often performed in patients with colorectal cancer, bladder cancer, bowel obstruction, and other etiologies.⁹ The ostomy types mainly includes colostomy, ileostomy, and urostomy,¹ which refer to a surgically created opening from the colon, small intestine, or isolated segment of the ileum to the abdominal wall to allow the elimination of feces or urine.¹⁰ Living with an ostomy can have adverse impacts on body image, sexual function, mood, and everyday activities.^{11,12} Stoma-related complications are one of the most common physical consequences of having a stoma.¹³ People undergoing ostomy surgery, whether temporary or permanent, face numerous challenges and lifestyle changes.¹⁴

CPGs are statements that include recommendations based on a systematic review of evidence and an assessment of the benefits and harms of different care alternatives.¹⁵ Ostomy CPGs can provide nurses/clinicians with various evidence-based recommendations to support people who are planning to have an ostomy or who already have an ostomy. These recommendations include preoperative and postoperative care needs such as stoma site marking, education, and follow-up.¹ Most CPGs can apply to colostomy, ileostomy, and urostomy.¹ Implementing the recommendations of CPGs has been reported to decrease complications and improve quality of life.^{4–6} Although multiple ostomy guidelines exist, the choice of which guidelines to implement can be difficult because not all CPGs have a high level of quality.

At present, tools for evaluating the quality of guidelines include AGREE II,⁷ AGREE-REX,⁸ AGREE-China,¹⁶ and Reporting Items for Practice Guidelines in Health Care (RIGHT).¹⁷ The AGREE II is a methodological tool for evaluation, formulation, and reporting of guidelines.⁷ This tool comprises 23 items arranged into six domains (scope and purpose, stakeholder involvement, rigor of development, clarity of presentation, applicability, and editorial independence).⁷ AGREE II is widely used to appraise the overall methodological quality of CPGs.¹⁸ However, a high AGREE II score does not ensure that the recommendations of guidelines are clinically credible and implementable.⁸ For instance, AGREE II was used to appraise official disability guidelines, and achieved a high score (eg, the clarity of the presentation domain score was 75%; scale: 0–100%).¹⁹ However, expert clinicians reported that the recommendations have less utility in the non-guideline development setting. In addition, for several themes, the content was of doubtful

validity. Therefore, the AGREE-REX tool was established as a companion of the AGREE II tool, to appraise the clinical credibility, trustworthiness, and implementability of recommendations.⁸ The AGREE-REX has nine items representing three domains (clinical applicability, values and preferences, implementability).⁸

To meet the needs of Chinese guideline evaluation, AGREE-China was developed on the basis of the AGREE II.¹⁶ AGREE-China has 15 items and five checkpoints (science and rigor, effectiveness and safety, economy, usability, and feasibility, and conflicts of interest). RIGHT was developed to address the gap between poor quality of reporting practice guidelines and the lack of widely accepted standards for reporting in health care.¹⁷ This instrument includes 22 items that are considered to be essential for good reporting of practice guidelines: basic information, background, evidence, recommendations, review and quality assurance, funding and declaration and management of interests, and other information.¹⁷ Compared with AGREE II, RIGHT places more emphasis on the guidance of guideline reporting.¹⁷

To help nurses/clinicians select the most appropriate ostomy guidelines to implement, it is necessary to assess the quality of guidelines and clinical applicability of recommendations. However, no comprehensive and rigorous evaluation of ostomy CPGs and their recommendations is currently available.

The Review

Aim

The current review sought to systematically search ostomy CPGs, critically assess the quality and applicability of the recommendations using the AGREE II and AGREE-REX, and summarize these recommendations to improve future ostomy guideline development and help ostomy nurses/clinicians select and implement better ostomy CPGs.

Design

A systematic review was conducted and reported following the Reporting Items for Systematic Review and Meta-Analyses guidelines. Prior to conducting the review, we filed the protocol with the international prospective register of systematic reviews (registration number: CRD42022302875).

Search Methods

Search Strategies

We developed search strategies with the help of an enterostomal therapist and an experienced senior librarian. Electronic databases, guideline repositories, and ostomy institution websites were searched. Electronic databases include PubMed, ProQuest, and CINAHL (EBSCO interface). The guideline repositories included the Registered Nurses' Association of Ontario (RNAO), the National Institute for Health and Care Excellence (NICE), CPG Infobase: Clinical Practice Guidelines (Canadian Medical Association), the BMJ Best Practice and Clinical Key (Elsevier) and four other repositories. Ostomy institution websites included the World Council of Enterostomal Therapists (WCET), the Wound, Ostomy and Continence Nurses Society (WOCN), and the United Ostomy Associations of America (UOAA).

The search strategies were tailored to the characteristics of each database, repositories and website using the following medical subject headings (MeSH) and keywords as search terms: "ostomy", "stoma", and "guideline." This review focused on guidelines published between 2011 and 2021. The initial search was conducted on June 2, 2021, then updated on September 3, 2021. An example PubMed search is as follows: (("ostomy" [Mesh]) OR ("ostomy"[TI/AB]) OR ("stoma"[TI/AB])) AND (("guideline"[Mesh]) OR ("guideline*" [TI/AB])).

Eligibility Criteria

The following criteria were used to determine guideline eligibility. Inclusion criteria: recommendations about ostomy care and management, with an explicit statement that it is a guideline; colostomy, ileostomy and urostomy guidelines; temporary and (or) permanent ostomy; English-language guidelines; and the latest version of guidelines. Exclusion criteria: incomplete guidelines (eg, abridged versions); lack of certain components that should be included in a guideline, such as a structured evidence review; best practice, the practice of policy statements, description of guideline development, practical guides; an absence of specific recommendations in the guidelines for ostomy care and management, the guidelines only mention ostomy (eg, Bladder cancer: diagnosis and management).

Process of Including and Excluding Articles

All search results were imported into Endnote (version X9). Two authors (L, Z) independently screened titles and abstracts after eliminating duplicates. Without abstracts, the title was used to assess eligibility. For relevant records, full-text versions of manuscripts were acquired and screened. Guidelines were included and excluded according to the eligibility criteria. Disparities in these processes were resolved with the help of the third author (P).

Search Outcomes

Electronic databases, guideline repositories, and ostomy institution websites yielded 1475 records, and 183 duplicates were then deleted. 27 full-text articles were obtained and screened, and 17 were excluded. Finally, 10 ostomy CPGs were included (Figure 1).

Quality Appraisal

AGREE II was used to appraise the overall methodological quality of each included CPG. Each item of this instrument is ranked on a seven-point scale (1 [strongly disagree] to 7 [strongly agree]).⁷ The domain scores are computed by adding all of the individual item scores, then standardized to the maximum possible score. The calculation formula is as follows:

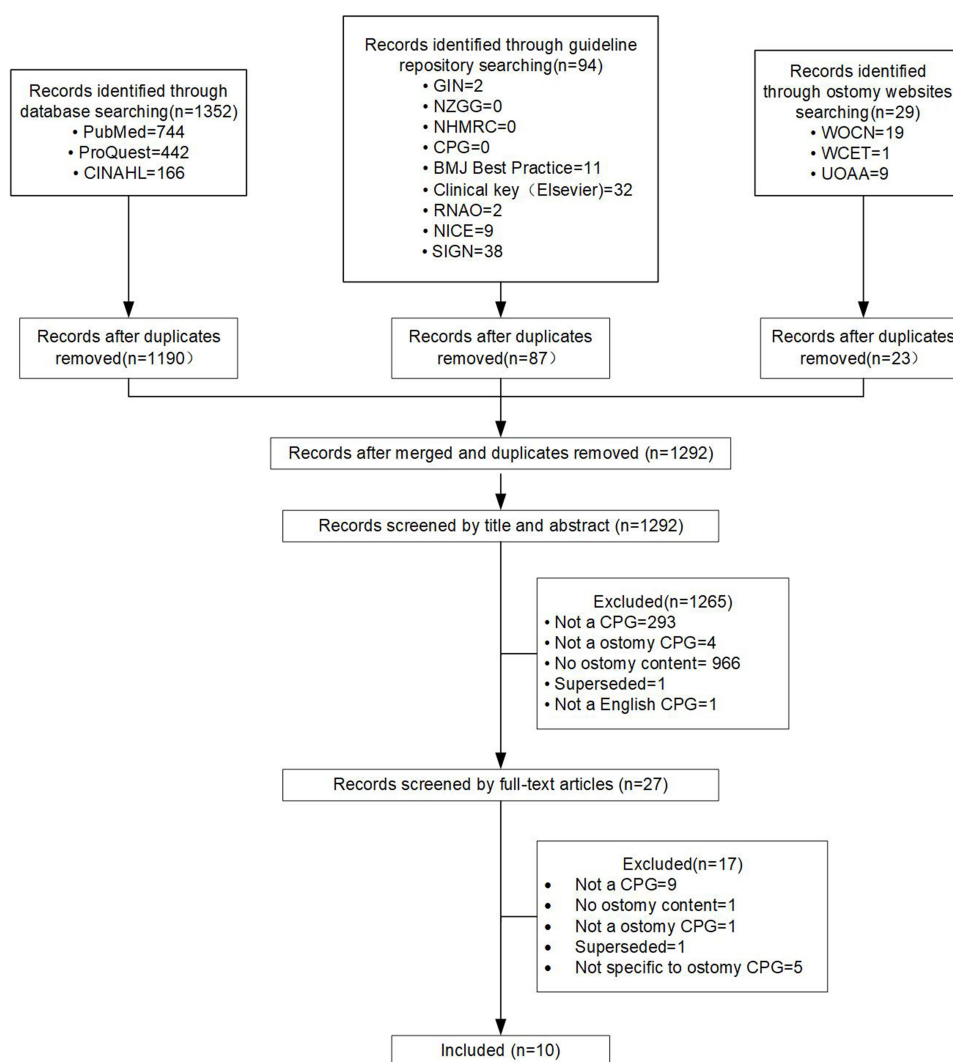


Figure 1 The flow diagram of studies selection.

(obtained score – minimum possible score)/(maximum possible score – minimum possible score) × 100%. Each domain has a standardized score ranging from 0% to 100%.

AGREE-REX was used to appraise the credible and implementable recommendations. Similar to AGREE II, each item is graded on a seven-point scale, and the domain score can be standardized.⁸ More detail related to the AGREE II and AGREE-REX tools is available on the AGREE research trust website (<https://www.agreetrust.org>).

The average score was calculated for each guideline: ((the guideline AGREE II average scores) + (the guideline AGREE-REX average scores))/2. Guidelines were then ranked on the basis of these average scores. The top three were ranked as high, the middle three were ranked as moderate, and the bottom four were ranked as low.

The quality of the 10 included guidelines was appraised independently by two authors (L, Z). Before the appraisal, two authors used the online training tool in the My AGREE PLUS platform (<https://www.agreetrust.org>) to ensure proficiency and accuracy in using the AGREE II tool. The reliability of the score assigned by the two reviews was evaluated using intraclass correlation coefficients (ICC). All of the ICC values were > 0.75. The two reviewers used a consensus approach to reach agreement about the AGREE-REX item scores. Before appraisal using the AGREE-REX tool, two reviewers evaluated two CPGs in advance (no online training was available for the AGREE-REX tool).

Data Extraction

The characteristics (eg, title, author, year, and objective) of the 10 included guidelines were extracted by one author (L) using the developed extraction tool.²⁰ In addition, these data were confirmed by another author (Z). The methodological quality and implementability of the recommendations of the 10 included guidelines were presented through the six domain scores of the AGREE II and the three domain scores of the AGREE-REX. A summary of the 10 included guidelines recommendations and their level of evidence is given.

Results

Characteristics of Included CPGs

Table 1 shows the characteristics of the 10 included guidelines. In this review, the included CPGs were released between 2015 and 2021. The purpose of almost all of the included guidelines was to provide recommendations for the care and management of adult patients with stomas. The intended users of the guidelines included nurses, educators, leaders, policymakers, and researchers.

Quality of Included CPGs

Quality of Each Included CPG

Table 2 shows the domain, total, and average scores of each included CPG using AGREE II and AGREE-REX.

AGREE II: among the 10 guidelines, 2019 RNAO¹ exhibited the highest total scores, and the 2015 American Society of Colon and Rectal Surgeons (ASCRS)²¹ had the lowest total scores. 2019 RNAO¹ had the highest domain scores in four domains (“scope and purpose”, “rigor of development”, “applicability”, and “editorial independence”). 2020 WCET²² had the highest domain scores in two domains (“stakeholder involvement” and “clarity of presentation”). In the “editorial independence” domain, 2018 WOCN¹⁴ had the highest score. In the “rigor of development” domain, 2018 EHS²³ had the highest score.

AGREE-REX: 2019 RNAO¹ had the highest total score and highest domain scores in all three domains. 2015 ASCRS²¹ had the lowest total score.

AGREE II and AGREE-REX: The “high” quality guidelines were 2019 RNAO,¹ 2019 NICE,²⁴ and 2018 EHS.²³ The “moderate” quality guidelines were 2020 WCET,²² 2018 WOCN,¹⁴ and 2019 MISSOTO.²⁵ The “low” quality guidelines were 2021 MISSOTO,²⁶ 2016 Toronto,²⁷ 2018 CAET,²⁸ and 2015 ASCRS.²¹

Quality of Each Domain of All Included CPGs

AGREE II: Figure 2 shows each AGREE II domain score of all included CPGs. The median of the “editorial independence” domain was the highest (86%), while the median of the “applicability” domain was the lowest (45%).

Table 1 Included CPGs Characteristics

Title, Year, Developer	Purpose	Intended Users	Methods of Search or Screen the Evidence	Methods of Develop Recommendations (Number)
Italian guidelines for the nursing management of enteral and urinary stomas in adults (2021) MISSTO ^{a26}	Provide recommendations for the care and management adult patients with enteral and urinary stomas.	Nurses	Structured searches and specialized searches across 15 databases for 5 topic categories. Inclusion criteria were used to screen.	Expert consensus (19)
International ostomy guideline (2020) WCET ^{b22}	Provide ostomy recommendations that can be adapted to the specific patient and nation situation regardless of the health-care system.	Stoma/ enterostomal therapist Nurses	Systematic literature searches. Screened on inclusion/exclusion criteria.	Not stated (15)
Supporting adult who anticipate or live with an ostomy (2019) RNAO ^{c1}	Provide recommendations to adults who are anticipating or living with an ostomy that will promote self-management, improve delivery of care, and result in beneficial health outcomes.	Nurses, patients and their families, interprofessional team members, policymakers, educators, leaders, researchers	Systematic search and specialized searches across 4 databases for 4 topic categories. The Appraisal of Guidelines for Research and Evaluation II (AGREEII) tool is used to appraise current guidelines.	Expert consensus (6)
Reinforcement of a permanent stoma with a synthetic or biological mesh to prevent a parastomal hernia (2019) NICE ^{d24}	Provide recommendations about the safety and efficacy of an interventional procedure.	Healthcare professionals	Systematic literature searches of more than 20 databases and websites. Eligibility criteria were used to screen.	Expert consensus (16)
Italian guidelines for the surgical management of enteral stomas in adults (2019) MISSTO ^{a25}	Provide surgical and nursing recommendations for care stomas (enteral and urinary).	Surgeons and nurses	Structured searches and specialized searches across 15 databases for 5 topic categories. Inclusion criteria were used to screen.	Expert consensus (30)
Enterocutaneous Fistula and Enteroatmospheric Fistula (2018) CAET ^{e28}	Provides recommendations for adults ostomy care in all care settings.	Nurses	Systematic literature searches across 4 databases.	Expert consensus (8)

European hernia society guidelines on prevention and treatment of parastomal hernias (2018) EHS ^{f23}	Provide recommendations for prevention and therapy of parastomal hernias.	Health-care persons, policymakers	Systematic search and specialized searches across 4 databases for 5 topic categories.	Expert consensus (12)
Management of the adult patient with a fecal or urinary ostomy (2018) WOCN ^{g14}	Provide recommendations to improve ostomy care practice.	Healthcare professionals	Systematic searches and specialized searches across E.B.Stephens Company (EBSCO) Discovery Service for 17 topic categories. Eligibility criteria were used to screen.	Expert consensus (37)
Best practice guideline for the care of patients with a fecal diversion (2016) University of Toronto ²⁷	Make recommendations for patients with an ostomy following elective colorectal surgery receiving care within an Enhanced Recovery After Surgery program.	Enterostomal therapist, nurses, other health care professionals	Systematic literature searches across 2 databases.	Expert consensus (11)
Clinical practice guidelines for ostomy surgery (2015) ASCRS ^{h21}	Give guidance for patients undergoing ostomy surgery.	Practitioners, health care workers, and patients	Systematic review and focused searches of 4 topic areas across 4 databases.	Not stated (18)

Abbreviations: ^aMISSTO, Multidisciplinary Italian Study Group for STOMas; ^bWCET, World Council of Enterostomal Therapists; ^cRNAO, Registered Nurses' Association of Ontario; ^dNICE, National Institute for Health and Care Excellence; ^eCAET, the Canadian Association for Enterostomal Therapy; ^fEHS, European Hernia Society; ^gWOCN, Wound, Ostomy and Continence Nurses Society; ^hASCRS, American Society of Colon and Rectal Surgeons.

Table 2 Each CPGs Domain Scores According to AGREEII and AGREE-REX

Guideline	AGREEII							AGREE REX				AGREEII & AGREE REX
	1. Scope & purpose %	2. Stakeholder involvement %	3. Rigor of development %	4. Clarity of presentation %	5. Applicability %	6. Editorial independence %	Total score %	1. Clinical applicability %	2. Values & preference %	3. Implementability %	Total score %	Average score %
2019 RNAO ¹	97	78	96	86	81	100	538	94	67	92	253	87
2019 NICE ²⁴	64	78	92	81	58	83	456	89	58	67	214	74
2018 EHS ²³	78	69	96	86	77	83	489	78	42	58	178	70
2020 WCET ²²	75	83	61	94	38	92	443	61	54	75	190	69
2018 WOCN ¹⁴	96	74	88	78	67	100	503	72	38	50	160	69
2019 MISSTO ²⁵	69	69	72	83	15	88	396	83	38	42	163	60
2021 MISSTO ²⁶	72	67	68	86	15	88	396	72	33	42	147	58
2016 Toronto ²⁷	89	53	57	89	8	38	334	61	25	33	119	48
2018 CAET ²⁸	72	42	58	72	52	38	334	50	17	50	117	47
2015 ASCRS ²¹	78	47	49	78	4	4	260	61	13	33	107	40

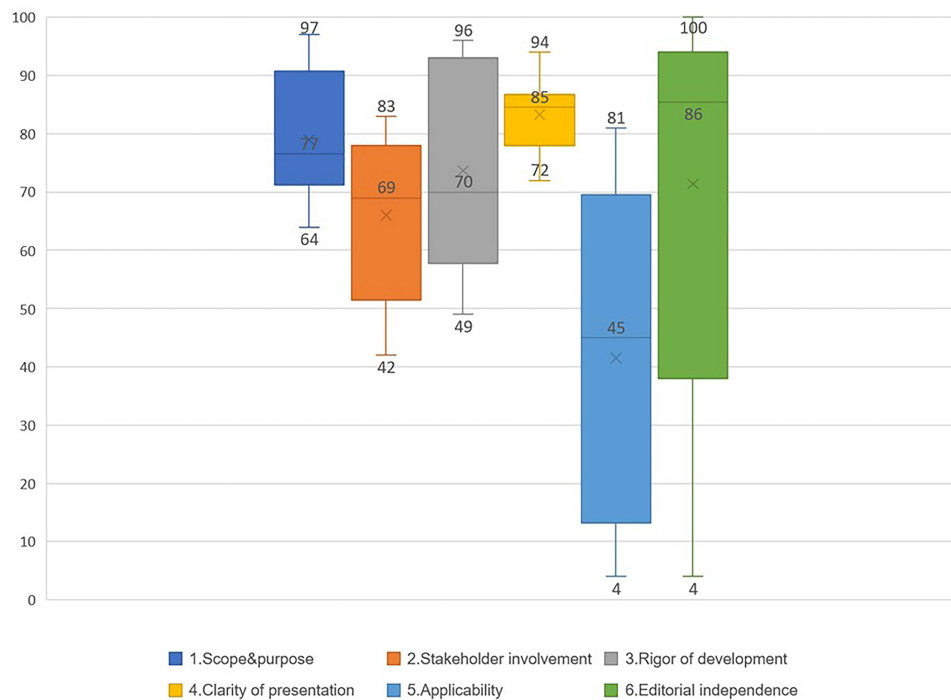


Figure 2 AGREE II domains scores of all included CPGs.

The “clarity of presentation” domain was most concentrated in relation to scores within a range of 72% to 94%. The “editorial independence” domain was the most decentralized in relation to scores within a range of 4% to 100%.

AGREE-REX: **Figure 3** shows each AGREE-REX domain scores of all included CPGs. The median of the “clinical applicability” domain was the highest (72%), while the median of the “values and preferences” domain was the lowest (38%). The “clinical applicability” domain was the most concentrated in relation to scores within a range of 50% to 94%.

Recommendations and Levels of Evidence

Table 3 shows the recommendations and their levels of evidence from the included CPGs. The 10 CPGs contain 172 recommendations in total. Most of the recommendations are based on the evidence’s veracity across the included guidelines, which was found to be relatively consistent.

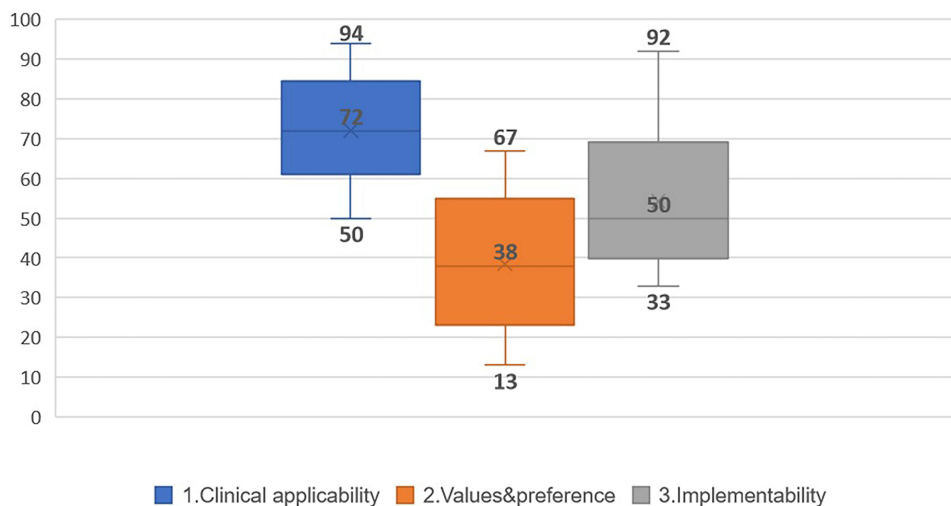


Figure 3 AGREE-REX domains scores of all included CPGs.

Table 3 Summary of Recommendations for Ostomy and Their Levels of Evidence

Category	Subcategory	Frequency	WCET	WOCN	RNAO/ASCRS/MISSTO/EHS/Toronto	CAET
Ostomy nurses/clinicians	Education and scope of practice	4	A, A-	-	-	-
	Interprofessional team	4	-	-	Low	IV&V
Ostomy care program	Develop standardized care program	4	-	-	Moderate, Low	-
	Quality of Life	I	-	C	-	-
	Malnutrition	I	-	-	-	IbandV
	Counseling and support	2	-	C	-	IV&V
Preoperative	Holistic assessment	5	A	-	Very low	IV&V
	Education	5	A	B, C	Moderate, Moderate-High	-
	Stoma site marking	8	A-, B+	B	Moderate, Low	-
	Preoperative discussion	I	-	-	Moderate	-
Intraoperative	Stoma Construction	3	-	C	Low	-
	Loop choice	2	-	-	Moderate, Experts' opinion	-
	Surgical approach	4	-	-	Low	-
	Temporary stoma creation	3	-	-	High, Low, Experts' opinion	-
	Technical aspects	8	-	-	High, Moderate, Low, Experts' opinion	-
Postoperative	Assessment	2	A	-	-	-
	Supporting rods	I	-	-	Moderate	-
	Ostomy pouching system management	8	A	C	-	-
	Output management	3	-	C	-	IV&V
	Medical management	I	-	-	-	Ib&V
	Education	5	-	B	Moderate, Low	IV&V
	Colostomy Irrigation	2	-	C	Low	-
	Parastomal hernia	44	-	C	High, Moderate, Low, Experts' opinion	-
	Stoma prolapse	4	-	C	High, Moderate, Experts' opinion	-
	Other somal-related complication	31	-	C	Low, Very low, Experts' opinion	-
Postdischarge	Standardized approach	4	-	C	High, Moderate, low	-
	Support information	3	-	-	High, Moderate, Low	-
Stoma closure	Timing	2	-	-	High, Low	-
	Skin closure	2	-	-	High, Moderate	-
	Technical aspects	4	-	-	High, Moderate, Low	-
	Antibiotic prophylaxis	I	-	-	Low	-

Note: WCET: A (highest), A-, B+, B, B-, C (lowest); GRADE: RNAO/ASCRS/MISSTO/EHS; Toronto: high, moderate, low, very low, Experts' opinion; CAET: Ia (highest), Ib, II, III, IV, V (lowest); WOCN: A (highest), B, C (lowest).

Discussion

To the best of our knowledge, the current study is the first systematic review to evaluate the quality and clinical applicability of ostomy CPG. The 10 included CPGs were of relatively high-quality in the majority of the AGREE II and

AGREE-REX domains (Table 2). The 2019 RNAO guideline¹ achieved the highest total scores using the AGREE II and AGREE-REX tools. Two other guidelines (2019 NICE,²⁴ 2018 EHS²³) were also ranked as “high” quality, and evaluated as “recommended.” Thus, the current results indicate that three high-quality guidelines may be appropriate first choices for nurses or physicians when performing ostomy care and management.

The results revealed discrepancies in methodological quality between CPGs, particularly in the applicability (AGREE II domain) and values and preferences (AGREE-REX domain) domains (Figures 2 and 3). These findings suggest that the quality regarding stoma guidelines and clinical applicability of recommendations should be further improved. The current results are consistent with quality appraisal results of previous studies in other clinical areas, including pressure injury CPGs¹⁸ and melanoma CPGs.²⁹

The median “applicability” was lowest among the six AGREE II domains (Figure 2). The median applicability score reported in a previous study was 42% across 137 guidelines published in 2008 or later.³⁰ This is similar to the median observed in the current review. Limited application of guidelines can lead to the omission of good healthcare, avoidable injury, poor patient outcomes or experiences, and resource waste.³¹ It is important to promote guideline applicability. Additional resources may be required to implement the recommendations. More specialist personnel, new technology, and costly drug treatment, for instance, may be required. These factors could have a financial impact on healthcare costs.⁷ However, almost all of the guidelines lacked explicit information about cost in this review. Some studies have focused on how to incorporate resource and cost evidence when formulating recommendations.³² Importantly, consideration of the potential resource impact of recommendations should also be undertaken by guideline developers.

Most included guidelines were insufficient in the “values and preferences (AGREE-REX domain)” of target users, public/patients, and policymakers (Figure 3). Previous research indicates that the importance of addressing the values and preferences of stakeholders in reliable guideline formulations is widely accepted.³³ Stakeholder involvement can also assist in maximizing the acceptance and feasibility of a guideline from the perspectives of intended users.³⁴ A notable exception is the 2019 RNAO guideline.¹ This guideline specifies the role of an expert panel in determining the scope of the guidelines and formulating questions to guide the literature review through focus group interviews. Nurses, clinicians, teachers, researchers, and policymakers made up this expert panel, which also included people who had ostomy experience and were interprofessional in composition. The expert panel also provided feedback on the draft of the guideline. Therefore, when developing guidelines, these methods of stakeholder involvement and engagement should be considered.

The recommendations of the included guidelines were consistent, although they used different evidence grading systems to indicate the levels of evidence (Table 3). All of the guidelines included in this study were found to include low to high levels of evidence that informed their recommendations. Some recommendations were made on the basis of low- or very low-level evidence, or even on the basis of experts’ opinions, representing uncertain clinical effects. More studies providing high-level evidence (eg, randomized controlled trials) regarding ostomy care should be conducted to support guideline developers in making recommendations.³⁵ The current results revealed that parastomal hernia prevention and management received the most attention among all recommendation subcategories. One potential reason for this finding is that parastomal hernia is the most common ostomy-related complication in various types of stomas.³⁶ Although parastomal hernias received extensive attention in the included guidelines, some surgeons do not believe that the currently available evidence is sufficient.³⁷ In addition, a study from Poland revealed low compliance with guideline recommendations for the repair of parastomal hernias.³⁸ Thus, there is a need for additional studies, high-quality evidence, and guideline application on this subject in future. This is even more important for other topics.

Most of the CPGs included in the current review focused on adults who have or will have an ostomy (Table 1). A lack of guidelines for pediatric ostomy patients was identified through this review. To address this shortcoming, a distinct search for evidence and methods for guideline creation was required. The intended users of most CPGs are nurses, educators, leaders, policymakers, and researchers, rather than patients. An ostomy is a long-term condition, and self-care enhances health in people with these conditions.³⁹ The current guidelines are very specialized and may not be suitable for patients. There is an urgent need to consider patients’ needs and health concerns as the central priority, and to build patient guidelines on the basis of evidence.

Limitations

The search strategies in the current review were designed with the help of an enterostomal therapist and an experienced librarian. This ensured that the search strategies were professional, comprehensive, and effective. However, some relevant CPGs were likely to have been overlooked because of language or publication restrictions.

Conclusion

The findings of the current review revealed that the quality and clinical applicability of included guidelines varied substantially. Three high-quality clinical practice guidelines, however, were identified. These guidelines appear to be suitable for implementing in daily practice, and can be tailored to the needs of the local context. The current results also suggested a need for greater promotion of applicability, values and preferences in developing ostomy guidelines. Consideration of the potential resource impacts of recommendations should also be undertaken by guideline developers to improve application. To improve values and preferences, stakeholder involvement need to be considered for formulating recommendations. There is a need for future studies and high-quality evidence to support the further development of ostomy guidelines. Pediatric ostomy care needs more research attention. Intended user of guidelines for patient needs to be developed.

Author Contributions

Dong Pang, Xinjuan Wu: conception, study design, execution, acquisition of data, analysis and interpretation, substantially revised or critically reviewed the article. Jiamin Li : conception, study design, execution, acquisition of data, analysis and interpretation, drafted or written. Qiuwen Zhang : study design, execution, acquisition of data, analysis and interpretation. All authors made a significant contribution to the work reported, whether that is in the conception, study design, execution, acquisition of data, analysis and interpretation, or in all these areas; took part in drafting, revising or critically reviewing the article; gave final approval of the version to be published; have agreed on the journal to which the article has been submitted; and agree to be accountable for all aspects of the work.

Disclosure

The authors state that they have no known conflicting financial interests, personal or professional affiliations, or other relationships that may appear to have influenced the work presented in this study.

References

1. Registered Nurses' Association of Ontario. *Supporting Adults Who Anticipate or Live with an Ostomy*. 2nd ed. Toronto (ON): Registered Nurses' Association of Ontario; 2019.
2. Place unknown: stomaatje.com; c2005–2018. What is a stoma? [homepage on the Internet]. Available from: <http://www.stomaatje.com/whatisastoma.html>. Accessed August 19, 2021.
3. Vonk-Klaassen SM, de Vocht HM, den Ouden ME, Eddes EH, Schuurmans MJ. Ostomy-related problems and their impact on quality of life of colorectal cancer ostomates: a systematic review. *Qual life res*. 2016;25(1):125–133. doi:10.1007/s11136-015-1050-3
4. Stelton S, Zulkowski K, Ayello EA. Practice implications for peristomal skin assessment and care from the 2014 world council of enterostomal therapists international ostomy guideline. *Adv Skin Wound Care*. 2015;28(6):275–84; quiz 285–6. doi:10.1097/01.ASW.0000465374.42350.0f
5. Folguera-Arnau M, Gutiérrez-Vilaplana JM, González-María E, et al. Implementation of best practice guidelines for ostomy care and management: care outcomes. *Enferm Clin*. 2020;30(3):176–184. doi:10.1016/j.enfcli.2019.10.029
6. Hsu MY, Lin JP, Hsu HH, Lai HL, Wu YL. Preoperative stoma site marking decreases stoma and peristomal complications: a meta-analysis. *J Wound Ostomy Continence Nurs*. 2020;47(3):249–256. doi:10.1097/won.0000000000000634
7. Brouwers MC, Kho ME, Browman GP, et al. AGREE II: advancing guideline development, reporting, and evaluation in health care. *Prev Med*. 2010;51(5):421–424. doi:10.1016/j.ypmed.2010.08.005
8. Brouwers MC, Spithoff K, Kerkvliet K, et al. Development and validation of a tool to assess the quality of clinical practice guideline recommendations. *JAMA Netw Open*. 2020;3(5):e205535. doi:10.1001/jamanetworkopen.2020.5535
9. Coca C, Fernández de Larrinoa I, Serrano R, García-Llana H. The impact of specialty practice nursing care on health-related quality of life in persons with ostomies. *J Wound Ostomy Continence Nurs*. 2015;42(3):257–263. doi:10.1097/won.0000000000000126
10. Vilz TO, VW M, Kalff JC, Stoffels B. Intestinal stomata. *Der Chirurg*. 2020;91(3):269–280. German. doi:10.1007/s00104-020-01144-4
11. Beaubrun En Famille Diant L, Sordes F, Chaubard T. Psychological impact of ostomy on the quality of life of colorectal cancer patients: role of body image, self-esteem and anxiety. *Bull Cancer*. 2018;105(6):573–580. French. doi:10.1016/j.bulcan.2018.03.005
12. Furukawa C, Morioka I. Health-related quality of life and sleep disorders in patients with a urostomy: Is there a relationship? *J Wound Ostomy Continence Nurs*. 2017;44(4):358–362. doi:10.1097/won.0000000000000334
13. Carlsson E, Fingren J, Hallén AM, Petersén C, Lindholm E. The prevalence of ostomy-related complications 1 year after ostomy surgery: a prospective, descriptive, clinical study. *Ostomy Wound Manage*. 2016;62(10):34–48.

14. WOCN Society Clinical. Guideline: management of the adult patient with a fecal or urinary ostomy-an executive summary. *J Wound Ostomy Continence Nurs.* 2018;45(1):50–58. doi:10.1097/won.0000000000000396
15. Institute of Medicine. *Clinical Practice Guidelines We Can Trust*. Washington D.C: The National Academies Press; 2011.
16. Wang JY, Wang Q, Wang XQ, et al. Development and preliminary verification of the evaluation system for clinical practice guidelines in China. *Chronic Dis Transl Med.* 2020;6(2):134–139. doi:10.1016/j.cdtm.2019.08.007
17. Chen Y, Yang K, Marušić A, et al. A reporting tool for practice guidelines in health Care: the RIGHT statement. *Ann Intern Med.* 2017;166(2):128–132. doi:10.7326/m16-1565
18. Gillespie BM, Latimer S, Walker RM, et al. The quality and clinical applicability of recommendations in pressure injury guidelines: a systematic review of clinical practice guidelines. *Int J Nurs Stud.* 2021;115:103857. doi:10.1016/j.ijnurstu.2020.103857
19. Nuckols TK, Kanaka S, Raaen L, et al. Technical quality and clinical acceptability of a utilization review guideline for occupational conditions. Santa Monica, CA: RAND Corporation. 2017;55 Available from: https://www.rand.org/pubs/research_reports/RR1819. Accessed August 4, 2022.
20. Gillespie BM, Bull C, Walker R, Lin F, Roberts S, Chaboyer W. Quality appraisal of clinical guidelines for surgical site infection prevention: a systematic review. *PLoS One.* 2018;13(9):e0203354. doi:10.1371/journal.pone.0203354
21. Hendren S, Hammond K, Glasgow SC, et al. Clinical practice guidelines for ostomy surgery. *Dis Colon Rectum.* 2015;58(4):375–387. doi:10.1097/dcr.0000000000000347
22. Chabal LO, Prentice JL, Ayello EA. *International Ostomy Guideline*. Perth, Western Australia: World Council of Enterostomal Therapists; 2020.
23. Antoniou SA, Agresta F, Garcia Alaminio JM, et al. European Hernia Society guidelines on prevention and treatment of parastomal hernias. *Hernia.* 2018;22(1):183–198. doi:10.1007/s10029-017-1697-5
24. National Institute for Health and care excellence [homepage on the Internet]. NICE: reinforcement of a permanent stoma with a synthetic or biological mesh to prevent a parastomal hernia; 2019. Available from: <http://www.nice.org.uk/guidance/ipg654>. Accessed August 21, 2021.
25. Ferrara F, Parini D, Bondurri A, et al. Italian guidelines for the surgical management of enteral stomas in adults. *Tech Coloproctol.* 2019;23(11):1037–1056. doi:10.1007/s10151-019-02099-3
26. Roveron G, Barbierato M, Rizzo G, et al. Italian guidelines for the nursing management of enteral and urinary stomas in adults: an executive summary. *J Wound Ostomy Continence Nurs.* 2021;48(2):137–147. doi:10.1097/won.0000000000000745
27. Miller D, Pearsall E, Johnston D, Frecea M, McKenzie M. Executive summary: enhanced recovery after surgery: best practice guideline for care of patients with a fecal diversion. *J Wound Ostomy Continence Nurs.* 2017;44(1):74–77. doi:10.1097/won.0000000000000297
28. Rajhathy EM, Chaplain V, Hill MC, Woo KY, Parslow NE. Executive Summary: debridement: Canadian best practice recommendations for nurses developed by Nurses Specialized in Wound, Ostomy and Continence Canada (NSWOCC). *J Wound Ostomy Continence Nurs.* 2021;48(6):516–522. doi:10.1097/won.0000000000000822
29. Steeb T, Wessely A, Drexler K, et al. The quality of practice guidelines for melanoma: a methodologic appraisal with the AGREE II and AGREE-REX instruments. *Cancers.* 2020;12:6. doi:10.3390/cancers12061613
30. Gagliardi AR, Brouwers MC. Do guidelines offer implementation advice to target users? A systematic review of guideline applicability. *BMJ open.* 2015;5(2):e007047. doi:10.1136/bmjopen-2014-007047
31. Greenhalgh T, Howick J, Maskrey N. Evidence based medicine: a movement in crisis? *BMJ.* 2014;348:g3725. doi:10.1136/bmj.g3725
32. Sanabria AJ, Kotzeva A, Selva Olid A, et al. Most guideline organizations lack explicit guidance in how to incorporate cost considerations. *J Clin Epidemiol.* 2019;116:72–83. doi:10.1016/j.jclinepi.2019.08.004
33. Kelson M, Akl EA, Bastian H, et al. Integrating values and consumer involvement in guidelines with the patient at the center: article 8 in Integrating and coordinating efforts in COPD guideline development. An official ATS/ERS workshop report. *Proc Am Thorac Soc.* 2012;9(5):262–268. doi:10.1513/pats.201208-061ST
34. Cluzeau F, Wedzicha JA, Kelson M, et al. Stakeholder involvement: how to do it right: article 9 in Integrating and coordinating efforts in COPD guideline development. An official ATS/ERS workshop report. *Proc Am Thorac Soc.* 2012;9(5):269–273. doi:10.1513/pats.201208-062ST
35. Barton S. Which clinical studies provide the best evidence? The best RCT still trumps the best observational study. *BMJ.* 2000;321(7256):255–256. doi:10.1136/bmj.321.7256.255
36. Aquina CT, Iannuzzi JC, Probst CP, et al. Parastomal hernia: a growing problem with new solutions. *Dig Surg.* 2014;31(4-5):366–376. doi:10.1159/000369279
37. Aslam MI, Rubio-Perez I, Smart NJ, Singh B. A survey on practices for parastomal hernia prevention and repair among ESCP surgeons. *Hernia.* 2019;23(4):825–828. doi:10.1007/s10029-019-01921-z
38. Mitura K, Dąbrowiecki S, Śmietański M, Matyja A. Do we need changes in the organization of training in the hernia treatment in Poland? A survey on the acknowledgment of the recommendations of international hernia societies by surgeons. *Pol Przegl Chir.* 2017;89(5):12–18. doi:10.5604/01.3001.0010.5406
39. Krouse RS, Grant M, McCorkle R, et al. A chronic care ostomy self-management program for cancer survivors. *Psycho-Oncology.* 2016;25(5):574–581. doi:10.1002/pon.4078

Risk Management and Healthcare Policy

Dovepress

Publish your work in this journal

Risk Management and Healthcare Policy is an international, peer-reviewed, open access journal focusing on all aspects of public health, policy, and preventative measures to promote good health and improve morbidity and mortality in the population. The journal welcomes submitted papers covering original research, basic science, clinical & epidemiological studies, reviews and evaluations, guidelines, expert opinion and commentary, case reports and extended reports. The manuscript management system is completely online and includes a very quick and fair peer-review system, which is all easy to use. Visit <http://www.dovepress.com/testimonials.php> to read real quotes from published authors.

Submit your manuscript here: <https://www.dovepress.com/risk-management-and-healthcare-policy-journal>