

# Newly Emerging MDR *B. cereus* in *Mugil seheli* as the First Report Commonly Harbor *nhe*, *hbl*, *cytK*, and *pc-plc* Virulence Genes and *bla1*, *bla2*, *tetA*, and *ermA* Resistance Genes

Abdelazeem M Algammal<sup>1</sup>, Khyreyah J Alfifi<sup>2</sup>, Mahmoud Mabrok<sup>3</sup>, Marfat Alatawy<sup>2</sup>, Dalia A Abdel-moneam<sup>4</sup>, Saad Alghamdi<sup>5</sup>, Marwa M Azab<sup>6</sup>, Reham A Ibrahim<sup>7</sup>, Helal F Hetta<sup>8</sup>, Reham M El-Tarabili<sup>1</sup>

<sup>1</sup>Department of Bacteriology, Immunology, and Mycology, Faculty of Veterinary Medicine, Suez Canal University, Ismailia, 41522, Egypt; <sup>2</sup>Biology Department, Faculty of Science, Tabuk University, Tabuk, 71421, Saudi Arabia; <sup>3</sup>Department of Fish Diseases and Management, Faculty of Veterinary Medicine, Suez Canal University, Ismailia, 41522, Egypt; <sup>4</sup>Department of Aquatic Animal Medicine and Management, Faculty of Veterinary Medicine, Cairo University, Cairo, 12613, Egypt; <sup>5</sup>Laboratory Medicine Department, Faculty of Applied Medical Sciences, Umm Al-Qura University, Makkah, 21955, Saudi Arabia; <sup>6</sup>Department of Microbiology and Immunology, Faculty of Pharmacy, Suez Canal University, Ismailia, 41522, Egypt; <sup>7</sup>Marine Environmental Division- National Institute of Oceanography and Fisheries (NIOF), Suez, 43511, Egypt; <sup>8</sup>Department of Medical Microbiology and Immunology, Faculty of Medicine, Assiut University, Assiut, 71515, Egypt

Correspondence: Abdelazeem M Algammal, Department of Bacteriology, Immunology and Mycology, Faculty of Veterinary Medicine, Suez Canal University, Ismailia, 41522, Egypt, Email [abdelazeem.algammal@vet.suez.edu.eg](mailto:abdelazeem.algammal@vet.suez.edu.eg); Mahmoud Mabrok, Department of Fish Diseases and Management, Faculty of Veterinary Medicine, Suez Canal University, Ismailia, 41522, Egypt, Email [dr.mahmoudmabrok@yahoo.com](mailto:dr.mahmoudmabrok@yahoo.com)

**Background:** *Bacillus cereus* is a common food poisoning pathogen in humans. This study aimed to investigate the prevalence, molecular typing, antibiogram profile, pathogenicity, dissemination of virulence and antibiotic resistance genes associated with natural *B. cereus* infection among *Mugil seheli*.

**Methods:** Consequently, 120 *M. seheli* (40 healthy and 80 diseased) were obtained from private fish farms in Port-said Governorate, Egypt. Afterward, samples were processed for clinical, post-mortem, and bacteriological examinations. The recovered isolates were tested for antimicrobial susceptibility, phenotypic assessment of virulence factors, pathogenicity, and PCR-based detection of virulence and antibiotic resistance genes.

**Results:** *B. cereus* was isolated from 30 (25%) examined fish; the highest prevalence was noticed in the liver (50%). The phylogenetic and sequence analyses of the *gyrB* gene revealed that the tested *B. cereus* isolate displayed a high genetic similarity with other *B. cereus* strains from different origins. All the recovered *B. cereus* isolates (n =60, 100%) exhibited β-hemolytic and lecithinase activities, while 90% (54/60) of the tested isolates were biofilm producers. Using PCR, the tested *B. cereus* isolates harbor *nhe*, *hbl*, *cytK*, *pc-plc*, and *ces* virulence genes with prevalence rates of 91.6%, 86.6%, 83.4%, 50%, and 33.4%, respectively. Moreover, 40% (24/60) of the tested *B. cereus* isolates were multidrug-resistant (MDR) to six antimicrobial classes and carried the *bla1*, *bla2*, *tetA*, and *ermA* genes. The experimentally infected fish with *B. cereus* showed variable mortality in direct proportion to the inoculated doses.

**Conclusion:** As far as we know, this is the first report that emphasized the existence of MDR *B. cereus* in *M. seheli* that reflects a threat to the public health and the aquaculture sector. Newly emerging MDR *B. cereus* in *M. seheli* commonly carried virulence genes *nhe*, *hbl*, *cytK*, and *pc-plc*, as well as resistance genes *bla1*, *bla2*, *tetA*, and *ermA*.

**Keywords:** MDR *B. cereus*, virulence traits, antibiogram, virulence genes, antimicrobial resistance genes

## Introduction

Aquaculture is an optimistic sector of food production, providing a source of animal protein to the world's population and bridging the gap in food shortages due to overpopulation.<sup>1</sup> In fact, about 17% of the world's animal protein sources come from fish, and more than 3.3 million people with 20% of their average per capita animal protein consumption

substantially depending on aquatic organisms.<sup>2</sup> The world faces serious challenges to feed its growing population. This surpassing increase has been linked to overpopulation, income explosion and urbanization, and the structural development of the aquaculture sectors.<sup>3</sup> Therefore, the increase in fish demand must be supported by a concomitant rise in fish-producing sectors in line with the stagnation of fisheries.<sup>4</sup> Recently, there has been growing concern about the overuse of freshwater resources, which has prompted many authorities to make stately efforts to maximize fish productivity and profits through the expansion of mariculture.<sup>5</sup>

Mullets are a significant constituent of Egyptian fisheries and represent the main cash crops of artisanal fisheries in the country's lagoons and shores.<sup>6</sup> Mullets have been grown in the "Hosha" system along the Nile delta as part of a long-established custom for decades.<sup>7</sup> Egypt is currently a leading country in mullet farming with a record production of 129,000 million tons in 2015, which represents 10.5% of the aquaculture yield.<sup>8</sup> Due to the expansion and intensification of aquaculture, many synthetic chemicals and biologics have widely utilized to control and treat pond water and sediments, causing water and environmental pollution and the emergence of threatened emerging pathogens.<sup>9</sup> In fact, the frequent use of chemicals has adverse effects on fish health through impairment of water parameters, alteration of natural flora, and immunosuppression that are predisposing factors for emergence of bacterial diseases.<sup>10</sup>

Mullets, like other marine organisms, are susceptible to many bacterial diseases, including Gram-positive bacteria.<sup>11</sup> Among them, *Bacillus cereus* was mentioned earlier as a threatening fish pathogen.<sup>12</sup> *B. cereus* is a Gram-positive, motile, facultative anaerobes, and sporogenous ubiquitous bacteria frequently recovered from the water, soil, plants, and various food products.<sup>13</sup> It is an opportunistic foodborne pathogen of public health importance; it is initially considered the main cause of gastroenteritis and food poisoning in humans.<sup>14</sup> *B. cereus* possesses various toxins and other virulence traits encoded by several virulence genes, including hemolytic toxins and non-hemolytic enterotoxins, cytotoxin K (cytK), and hemolytic gene encoding phospholipase.<sup>15</sup>

The produced toxins are responsible for several human illnesses such as emesis and diarrheal syndromes, fulminant septicemia, nervous manifestations (brain abscesses and meningitis), and gas gangrene,<sup>16</sup> pneumonia,<sup>17</sup> eye infections (endophthalmitis), and neonates bacteremia.<sup>18</sup> *B. cereus* also harbored many antimicrobial-resistance genes and showed different resistance patterns to various antibiotic classes.<sup>19</sup> The bacteria are highly resistant to  $\beta$ -lactam antibiotics<sup>20</sup> and showed acquired resistance to some antimicrobial agents like erythromycin, ciprofloxacin, streptomycin, and tetracycline.<sup>21</sup>

A brief study of the whole genome sequence of *B. cereus* revealed that the bacteria harbored  $\beta$ -lactam resistant genes, macrolide-resistant genes, and tetracycline-resistant genes.<sup>19</sup> The regular and indiscriminate use of antibiotics to treat and/or control aquatic diseases, along with bad management, results in the existence of multidrug-resistant strains. Former studies have reported the occurrence of MDR bacterial pathogens in the aquaculture sector that could be transmitted to humans via the consumption of contaminated food.<sup>22,23</sup>

*Bacillus* species have been widely used in aquaculture practices as growth promoters, immunostimulants, and probiotics. However, under certain adverse conditions, the bacteria become pathogenic and serious systemic infections occur. *Bacillus* spp., particularly *B. cereus*, could induce diseases in several fish species, including common carp (*Cyprinus carpi*),<sup>24</sup> striped bass (*Morone saxatilis*),<sup>12</sup> European seabass (*Dicentrarchus labrax*),<sup>25,26</sup> white seabream (*Diplodus sargus*),<sup>27</sup> and stinging catfish (*Heteropneustes fossilis*).<sup>28</sup>

The pathogenicity of *B. cereus* varies greatly, with the strains being harmless or lethal. This variation may reveal constraints in detecting the dangers of bacteria and often leads to misbelief of the associated risks. Therefore, full awareness about the prospect pathogenicity of bacteria is a main challenge for the fish-producing industries. To our knowledge, this is the first study investigating the prevalence, sequence analysis, and antibiogram pattern of newly emerged *B. cereus* among cultured *Mugil seheli*. The study also provides new insights into virulence traits and antibiotic resistance genes typically inherited by bacteria, which contribute significantly to finding decisive solutions to treat or control the disease.

## Methods

### Animal Ethics

The present study was performed in compliance with the ARRIVE guidelines. All protocols were conducted according to relevant guidelines and regulations. Fish handling and all the experiments were approved by the Animal Ethics Review

Committee of Suez Canal University (AERC-SCU), Egypt. The authors have obtained a permission from the farm owners to conduct a research on their fish.

## Fish Sampling

One hundred and twenty *Mugil seheli* (40 healthy and 80 diseased with an average weight  $80 \pm 15$  g) were obtained from private farms in Port-said Governorate, Egypt, from March 2021 to June 2021. The collected fish were transported to the laboratory in aerated sealed plastic bags for further clinical and bacteriological examinations.

## Clinical and Post-Mortem Inspection

The collected fish were clinically inspected for detection of gross or internal lesions as previously described by Schäperclaus.<sup>29</sup>

## Isolation and Identification of *B. cereus*

A 3–5 g of each examined (kidney, liver, and gills) sample was homogenized in 90 mL of buffered peptone water (BPW, Oxoid, UK) for 2 min using a stomacher. Moreover, the obtained samples were subjected to a 15-min heat treatment at 70 °C to eliminate vegetative cells and isolate the bacterial spores.<sup>15</sup> To prevent spore germination, the heated samples were immediately placed on ice. Subsequently, 100 µL were inoculated on Mannitol Egg-Yolk Polymyxin (MYP) agar plates and incubated at 37 °C for 24 h. The identification of *B. cereus* was carried out according to the colonial characters, morphological characteristics, endospore formation, and biochemical reactions: catalase and oxidase activity, H<sub>2</sub>S test, methyl red Voges–Proskauer test, indole test, and carbohydrate fermentation ability, as described by Maturin and Peeler.<sup>30</sup> Furthermore, the isolates were phenotypically identified using the VITEK 2 compact system (bioMérieux, France),<sup>31</sup> whereas confirmed genetically using PCR-based detection of the *gyrB* gene as previously described by Yamada,<sup>32</sup> followed by gene sequencing.

## *B. cereus gyrB* Gene Sequencing

The recovered *B. cereus* isolates were identical in their phenotypic profiles, so the PCR product of one randomly selected strain was sent for direct sequencing in both directions after the purification by QIAquick PCR-Product extraction kit (QIAGEN Sciences Inc., Germantown, MD, USA). The sequencing was performed using the Bigdye Terminator V3.1 cycle sequencing kit (Thermo Fisher Scientific, Waltham, MA, USA). The obtained sequences were deposited in the GenBank with accession number: MZ647998. The BLAST (Basic Local Alignment Search Tool) analyses were conducted to determine the sequence similarity to GenBank accessions. Besides, the phylogenetic analyses were conducted based upon the MegAlign module of Laser gene DNA Star version 12.1 using neighbor-joining in MEGA6.<sup>33</sup>

## Phenotypic Assessment of Virulence Factors of *B. cereus* Isolated from *M. seheli*

### Biofilm Production

As previously described by Osman,<sup>34</sup> the biofilm development was assessed using glass test tubes. Briefly, each *B. cereus* strain was inoculated into tryptic soy broth (Oxoid, Hampshire, UK) and incubated overnight without shaking at 37 °C. A sterile broth was used as a negative control. After broth removal, the incubated tubes were stained with 1% crystal violet and incubated for 15 min (to examine cells adhering to the test tube). Shortly, the tubes were cleaned thoroughly using sterile distilled water. Each strain was tested three times. The positive result was specified by the production of purple biofilm.

### Hemolytic Activity

The tested isolates were streaked onto 5% sheep blood agar (Oxoid, UK) and incubated at 24 °C for 48 h. The appearance of β-hemolysis surrounding the colonies indicates a positive result, as previously described by Wiwat and Thiramanas.<sup>35</sup>

## Lecithinase Production

The tested isolates were inoculated onto Mannitol Egg-Yolk Polymyxin (MYP) agar plates and incubated at 37 °C for 24 h. The lecithinase production was indicated by the formation of a zone of egg yolk precipitation surrounding the colonies, as previously described by Quinn.<sup>36</sup>

## Antibiogram Pattern of the Recovered *B. cereus* Isolates

The antimicrobial resistance profiles of the retrieved *B. cereus* isolates were detected on Mueller-Hinton agar (Oxoid, Hampshire, UK) using the Kirby-Bauer disc diffusion method as previously described by Park.<sup>37</sup> The following antimicrobial agents (Oxoid, UK) were used (n=14); vancomycin (VAN) (30 µg), penicillin G (PEN) (10 U), amoxicillin (AMX) (30 µg), amoxicillin-clavulanic acid (AMC) (30 µg), meropenem (MEM) (10 µg), cefotaxime (CTX) (30 µg), ceftazidime (CAZ) (30 µg), nalidixic acid (NA) (30 µg), ciprofloxacin (CIP) (5 µg), sulfamethoxazole/trimethoprim (SXT) (25 µg), streptomycin (S) (10 µg), gentamycin (CN) (30 µg), doxycycline (DOX) (30 µg), and erythromycin (E) (15 µg). These antimicrobial agents were used frequently in the fish aquaculture sector in Egypt. The interpretation of results was performed according to the CLSI guidelines.<sup>38</sup> *B. cereus* ATCC 11778 strain was used as a reference strain. The tested *B. cereus* isolates were categorized according to their resistance patterns into MDR and XDR (Extensively drug-resistance means resistant to one or more antimicrobial agent in all except one or two antimicrobial classes) as previously described by Magiorakos.<sup>39</sup> The multiple antibiotic resistance (MAR) index was calculated as previously described by Krumperman<sup>40</sup> as the following formula: MAR = The number of antimicrobial agents to which the isolates are resistant/The total number of tested antimicrobial agents.

## PCR Detection of Virulence, Enterotoxins and Antibiotic Resistance Genes in the Recovered *B. cereus*

PCR assay was used to determine the enterotoxins genes; *hbl*, *nhe*, *cytK*, and *ces*, the hemolytic gene encoding phospholipases; *pc-plc*, and the antibiotic resistance genes; *bla1*, *bla2*, *tetA*, and *ermA* in the recovered *B. cereus* isolates. QIAamp DNA Mini Kit (QIAGEN Sciences Inc., Germantown, MD, USA/Cat. No. ID 51326) was used for genomic DNA extraction. Positive control strains (supplied by The AHRI, Dokki, Giza, Egypt) were used in the PCR assay, while a DNA-free reaction was involved as a negative control. The amplified PCR products were separated on agarose gel (1.5%) stained with ethidium bromide 0.5-µg mL<sup>-1</sup>, and then photographed. The primers sequences (Thermo Fisher Scientific, Waltham, MA, USA), amplicon size, and the PCR conditions are illustrated in Table 1.

## Pathogenicity Assay

### Adaptation Period

Approximately 150 apparently healthy *Tilapia zillii* weighing 36 ± 5 g (with no history of previous infections) were collected from private farms in Ismailia Province, Egypt. The *T. zillii* was selected as a common model of marine fish due to its ease of handling, while *M. seheli* is difficult to be handled. To ensure that the collected fish are free from diseases, eight random samples (n=8) were harvested and subjected to bacteriological examination (conventional method of bacterial isolation and identification) as well as parasitological examination (wet mounting, squash preparation, macroscopic and microscopic examinations) as described by Meyers.<sup>47</sup> The fish were acclimated in 1000 L fibreglass tanks for 10 days before the experiment. All water parameters values were adjusted at the permissible limits. Only apparently healthy fish with normal responses were harvested for further study.

### Inoculum Preparation

The bacteria were basically cultured on MYP agar and left incubated at 37 °C for 24 h. The characteristic pink, lecithinase-producing colony, was selected and streaked on Trypticase Soy Agar (TSA) (Oxoid, UK) at 37 °C for an extra 24 h. Subsequently, the bacterial suspension was adjusted at final concentrations (10<sup>4</sup>–10<sup>8</sup> CFU mL<sup>-1</sup>) using McFarland Turbidity Standard.<sup>48</sup>

### Experimental Setup

About 100 acclimated *T. zillii* were distributed randomly into five groups, each holding two similar subgroups (n= 10). Each subgroup contains ten fish reared in a 120 L glass aquarium. Fish in the first group were injected intraperitoneally

**Table I** The Oligonucleotides Sequences Used in the PCR Assay

| Primer        | Sequence   | Amplified Product | Amplification (35 Cycles) |                 |                 | References |
|---------------|--|-------------------|---------------------------|-----------------|-----------------|------------|
|               |  |                   | Denaturation              | Annealing       | Extension       |            |
| <i>gyrB</i>   | F: GAA GTC ATC ATG ACC GTT CTG CAY GCN<br>GGN GGN AAR TTY GA<br>R: AGC AGG ATA CGG ATG TGC GAG CCR TCN<br>ACR TCN GCR TCN GTC AT | 1350 bp           | 94°C<br>1 min.            | 66°C<br>1 min.  | 72°C<br>1 min.  | [32]       |
| <i>nhe</i>    | F:AAG CIG CTC TTC GIA TTC<br>R: ITI GTT GAA ATA AGC TGT GG   | 766 bp            | 94°C<br>30 sec.           | 49°C<br>40 sec. | 72°C<br>45 sec. | [41]       |
| <i>cytK</i>   | F: ACA GAT ATC GGI CAA AAT GC<br>R: CAA GTI ACT TGA CCI GTT GC   | 421 bp            | 94°C<br>30 sec.           | 49°C<br>40 sec. | 72°C<br>45 sec. |            |
| <i>ces</i>    | F: GGTGACACATTATCATATAAGGTG<br>R: GTAAGCGAACCTGTCTGTAACAACA  | 1271 bp           |                           |                 |                 |            |
| <i>pc-plc</i> | F: GAGTTAGAGAACGGTATTTATGCTGC<br>R: CTACTGCCGCTCCATGAATCC  | 411 bp            | 94°C<br>1 min.            | 55°C<br>1 min.  | 72°C<br>1 min.  | [42]       |
| <i>hbl</i>    | F: TGCACAAGAAACGACCGCTCA<br>R: ATAATTTGCGCCCATTGTATTCCAT   | 987 bp            | 94°C<br>30 sec.           | 54°C<br>40 sec. | 72°C<br>45 sec. | [43]       |
| <i>bla1</i>   | F: CATTGCAAGTTGAAGCGAAA<br>R: TGTCCTCGTAACCTCCAGCTC  | 680 bp            | 94°C<br>30 sec.           | 50°C<br>40 sec. | 72°C<br>45 sec. | [44]       |
| <i>bla2</i>   | F: TTGTCGATTCTTCTTGGGATG<br>R: CCCCTACTTCTCCATGACCA  | 483 bp            |                           |                 |                 |            |
| <i>tetA</i>   | F: GGCGGTCTTCTTCATCATGC<br>R: CGGCAGGCAGAGCAAGTAGA   | 502 bp            | 95°C<br>1 min.            | 58°C<br>1 min.  | 72°C<br>1 min.  | [45]       |
| <i>ermA</i>   | F:TCTAAAAAGCATGTAAAGAA R:<br>CTTCGATAGTTTATTAATATTAGT  | 645 bp            | 94°C<br>30 sec.           | 52°C<br>40 sec. | 72°C<br>45 sec. | [46]       |

(IP) with 200 µL of sterile saline and considered as a negative control (C – ve). The other groups (T<sub>I</sub> -T<sub>V</sub>), were injected IP with 200 µL of the overnight culture of *B. cereus* strain at different concentrations (10<sup>4</sup>–10<sup>8</sup> CFU mL<sup>-1</sup>, respectively) to detect the LD<sub>50</sub>, as there is no published reference study. *B. cereus* isolate that harbored *nhe*, *hbl*, and *cytK* virulence genes were chosen as a reference virulent strain. The abnormal behaviour and pathological lesions of the treated fish were investigated for two weeks post-inoculation. Cumulative mortalities and LD<sub>50</sub> were also recorded and calculated. Moribund and dead fish were regularly harvested and bacteriologically examined to ensure the Koch's postulates.

## Statistical Analyses

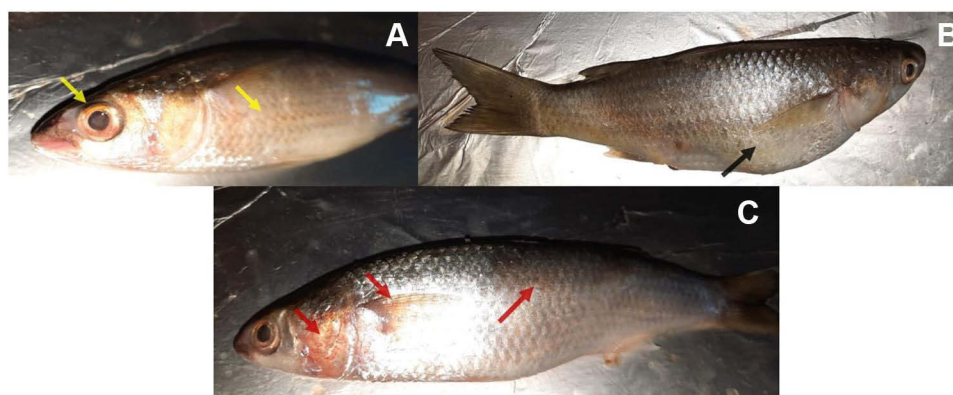
The obtained data were analyzed using the Chi-square test (SAS software, version 9.4, SAS Institute, Cary, NC, USA) (*p*-value< 0.05 indicates a significant difference among the measured parameters). Moreover, the correlation coefficient was performed using R-software (version 4.0.2; <https://www.r-project.org/>).

## Results

### Clinical and Post-Mortem Findings

The examined moribund *M. seheli* exhibited abnormal behavior, skin ulceration, abdominal distention, and hemorrhage on the body surface and gills (Figure 1A), and exophthalmia (Figure 1B). Moreover, the post-mortem examination showed hepatomegaly, congested kidney, and the accumulation of fluids in the abdominal cavity (Figure 2).





**Figure 1** The Naturally infected *M. seheli* with *B. cereus* exhibited (A) slight exophthalmia, scales detachment (yellow arrows), (B) abdominal distension (black arrow), (C) hemorrhagic patches on the fin and operculum, and skin ulcerations (red arrows).



**Figure 2** Naturally infected *M. seheli* with *B. cereus* showed enlargement and congestion of the kidney and liver (white arrows) with the accumulation of serous fluids in the body cavity (S).

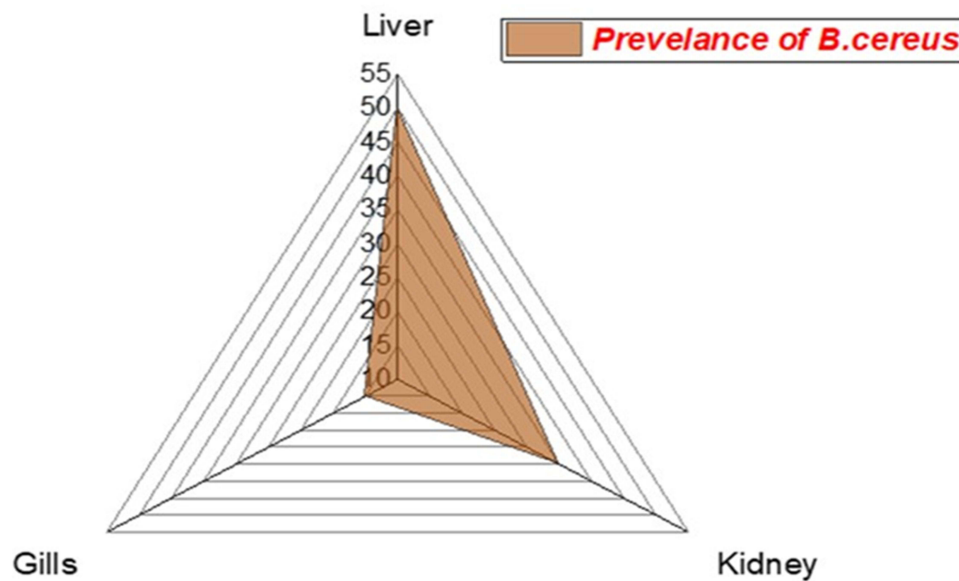
## Phenotypic Characteristics and the Prevalence of *B. cereus* Among the Examined Fish

Morphologically, all the retrieved *B. cereus* isolates were Gram-positive, motile, short rods round which arranged in pairs or chains. The retrieved isolates have a single non-bulging endospore that may be central or terminal. The colonies on Mannitol Egg-Yolk Polymyxin agar plates were pink and surrounded by a zone of precipitation. Biochemically, all the recovered isolates were positive for catalase, citrate utilization, glucose fermentation, Voges-Proskauer, and nitrate reduction tests. Moreover, they were negative for indole, mannitol fermentation, H<sub>2</sub>S production, oxidase, and methyl red tests. Moreover, the identification of all obtained isolates was confirmed using the VITEK2 compact apparatus and application of GP and BCL cards, where probability reached 100%. The results were estimated after comparing the results of the biochemical tests with the data carried in the VITEK2 software. The results of biochemical identification and VITEK2 were identical.

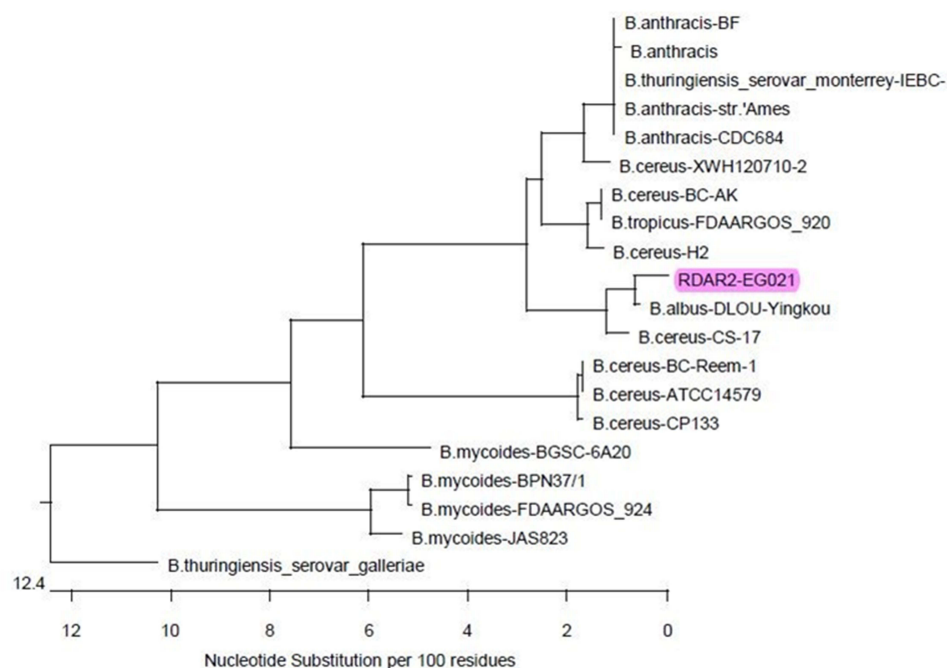
The prevalence of *B. cereus* among the examined fish was 25% (30/120). Concerning the distribution of *B. cereus* among different organs of the infected *M. seheli*, the highest prevalence was observed in the liver (50%), then kidney (35%), and gills (15%), as illustrated in Figure 3. Statistically, there is a significant difference in the prevalence of *B. cereus* between different internal organs of the examined *M. seheli* ( $p < 0.05$ ).

## Phylogenetic Analyses of the *gyrB* Gene

Phylogenetic and sequence analyses of the *gyrB* gene revealed that the tested *B. cereus* isolate (Accession No. MZ647998) displayed a remarkable genetic identity to other *B. cereus* strains from different origins. For example, *B. cereus* strain CS-17 (98.4%) of China (Accession No. KX346713), *B. cereus* strain H2 (95.7%) of isolated from rice in Japan (Accession No. AF136388), and *B. cereus* strain BC-AK (95.7%) of China (Accession No. CP020937), *B. cereus* strain XWH (95.5%) isolated from catfish in China (Accession No. KF022228), and *B. cereus* strain BC-Reem-1 (90.4%) isolated from raw milk in Egypt (Accession No. MT802303) as demonstrated in Figures 4 and 5. Besides, the nucleotide frequencies of adenine (A), thymine (T), cytosine (C), and guanine (G) were 36.85% (419), 26.65% (303), 15.57% (177), and 20.93% (238), respectively. Moreover, the nucleotide frequencies of A+T and C+G contents were 63.5% and 36.5%, respectively. The final alignments consisted of 1137 bp, where the sites 1108 and 29 were the most conserved sites and



**Figure 3** The radar illustrates the distribution of *B. cereus* among the internal organs of the examined *M. seheli*.



**Figure 4** The figure illustrates the phylogenetic analysis of *B. cereus gyrB* gene sequencing. The tree clarifies the genetic relatedness of the tested *B. cereus* strain and other *B. cereus* strains from different origins submitted in the GenBank database. The tested strain in the current study is highlighted (RDAR2-EG021).

variable sites, respectively. Furthermore, this sequence was found to contain five open reading frames (ORFs): ORF1 (nt 412 to 519), ORF2 (nt 1063 to 1137), ORF3 (nt 237 to 1137), ORF4 (nt 447 to 334), and ORF5 (nt 252 to 172).

## Phenotypic Assessment of Virulence Factors of *B. cereus* Isolated from *M. seheli*

### Biofilm Production

Biofilm production was assessed among the recovered *B. cereus* isolates, where 90% (54/60) of the tested isolates were positive for biofilm formation. Among the biofilm producers (n=54), four isolates are weak biofilm producers (7.4%), seven isolates (12.96%) are moderate for biofilm producers, and forty-three isolates (79.6%) are strong biofilm producers (Figure 6).

Heatmap showing Percent Identity between *B. cereus* strains. The y-axis represents Divergence (1 to 20) and the x-axis represents Percent Identity (1 to 20). The diagonal is black. Strains are listed on the right: B.cereus-BC-Reem-1, B.aibus-DLOU-Yingkou, B.cereus-CS-17, B.cereus-BC-AK, B.tropicus-FDAARGOS\_920, B.cereus-H2, B.anthraxis-BF, B.cereus-XWH120710-2, B.anthraxis-CDC684, B.thuringiensis\_serovar\_monterrey-IEBC-, B.anthraxis-str:Ames, B.anthraxis, B.mycoides-BGSC-6A20, B.cereus-ATCC14579, B.cereus-CP133, B.thuringiensis\_serovar\_galleriae, B.mycoides-JAS823, B.mycoides-BPN371, B.mycoides-FDAARGOS\_924.

A 3D pie chart illustrating the distribution of biofilm producers. The chart is divided into four segments: a large red segment for 'Strong biofilm producer' (71.67%), a green segment for 'Moderate biofilm producer' (11.67%), a blue segment for 'Weak biofilm producer' (6.67%), and a cyan segment for 'Non biofilm producer' (10%). A legend at the top identifies the colors for each category.

| Biofilm Producer Category | Percentage |
|---------------------------|------------|
| Strong biofilm producer   | 71.67%     |
| Moderate biofilm producer | 11.67%     |
| Weak biofilm producer     | 6.67%      |
| Non biofilm producer      | 10%        |

Using the disc diffusion method, vancomycin (98.3%), meropenem (96.6%), and ciprofloxacin (91.6%) exhibited a promising in-vitro antimicrobial activity against the recovered *B. cereus* isolates. Moreover, the retrieved *B. cereus* isolates displayed a significant resistance to various antimicrobial classes such as; Penicillins: penicillin and amoxicillin, (100% for each),  $\beta$ -Lactam- $\beta$ -lactamase-inhibitor combination: amoxicillin-clavulanic acid (91.6%), Cephalosporins: cefotaxime and ceftazidime (83.3%), Sulfonamides: trimethoprim-sulfamethoxazole (100%), and Macrolides: erythromycin (66.6%). Furthermore, the obtained isolates exhibited intermediate resistance to nalidixic acid (78.4%) as



described in Table 2 and Figure 7. Statistically, the retrieved *B. cereus* isolates exhibited a significant difference in their sensitivity to various antibiotics ( $p < 0.05$ ). In addition, the correlation coefficient was determined among various tested antibiotics. Significant positive correlations were observed between PEN, DOX, AMX, and CAZ ( $r = 0.99$ ); AMX, PEN, DOX, and CTX ( $r = 0.98$ ); AMX, PEN, DOX, and SXT ( $r = 0.97$ ); CAZ and AMC ( $r = 0.97$ ); CTX and AMC ( $r = 0.96$ ); SXT and E ( $r = 0.96$ ); SXT and AMC ( $r = 0.95$ ); CTX and E ( $r = 0.94$ ); CAZ and E ( $r = 0.93$ ); CN and CIP ( $r = 0.90$ ); MEM and CN ( $r = 0.88$ ); VAN and CN ( $r = 0.87$ ) (as described in Figure 8).

## Dissemination of Virulence and Antibiotic Resistance Genes in *B. cereus* Isolates

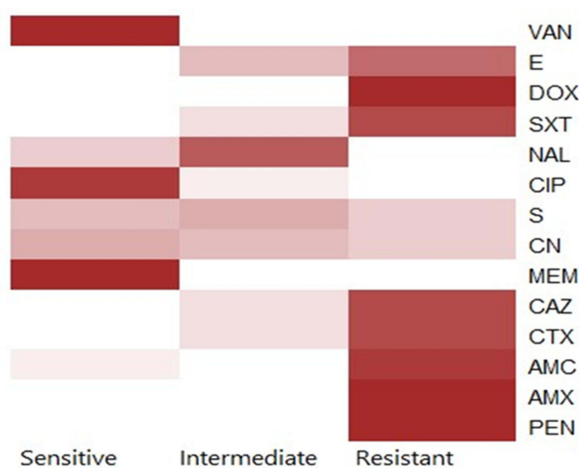
Using PCR, the tested *B. cereus* isolates commonly harbored the *nhe* (91.6%), *hbl* (86.6%), and *cytK* (83.4%) virulence genes. Moreover, the prevalence of the *pc-plc* and *ces* virulence genes was 50% and 33.4%, respectively. Furthermore, the tested isolates harbored the *bla1*, *bla2* ( $\beta$ -lactamase), *tetA* (tetracycline resistance), and *ermA* (erythromycin resistance) resistance genes were 100%, 83.3%, 100%, and 66.6%, respectively (Table 3 and Figure 9). The statistical analyses revealed a significant difference ( $p < 0.05$ ) in the existence of virulence genes in the tested *B. cereus* isolates. However, a non-significant difference ( $p > 0.05$ ) was noticed in the dissemination of the antibiotic resistance genes among the retrieved *B. cereus* isolates.

## Phenotypic and Genotypic Multidrug-Resistance Profiles in the Recovered *B. cereus* Isolates

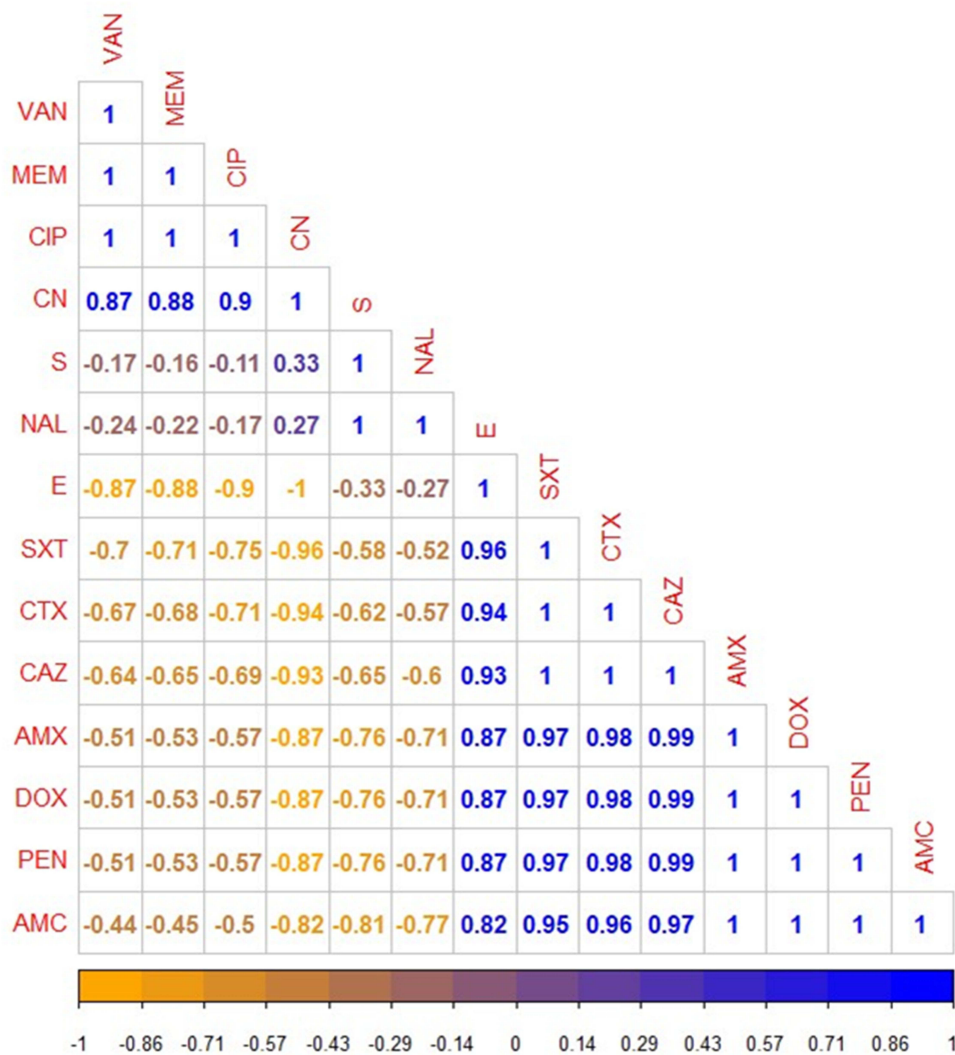
Our findings proved that 40% (24/60) of the recovered *B. cereus* isolates are multidrug-resistant (MDR: resistant to one or more antibiotics in three or more different classes) to six antimicrobial classes and carried *bla1*, *bla2*, *tetA*,

**Table 2** Antimicrobial Susceptibility Patterns of the Recovered *B. cereus* Isolates (n=60)

| Antimicrobial Classes                                     | Tested Antimicrobial Agent    | Interpretation |      |              |      |            |      |
|---|-------------------------------|----------------|------|--------------|------|------------|------|
|   |                               | Sensitive      |      | Intermediate |      | Resistance |      |
|   |                               | n              | %    | n            | %    | n          | %    |
| Penicillins   | Penicillin                    | 0              | 0    | 0            | 0    | 60         | 100  |
|   | Amoxicillin                   | 0              | 0    | 0            | 0    | 60         | 100  |
| $\beta$ -Lactam- $\beta$ -lactamase inhibitor combination | Amoxicillin-Clavulanic acid   | 5              | 8.4  | 0            | 0    | 55         | 91.6 |
| Cephalosporins  | Cefotaxime                    | 0              | 0    | 10           | 16.7 | 50         | 83.3 |
|   | Ceftazidime                   | 1              | 1.7  | 9            | 15   | 50         | 83.3 |
| Carbapenems   | Meropenem                     | 58             | 96.6 | 2            | 3.4  | 0          | 0    |
| Aminoglycosides   | Gentamycin                    | 24             | 40   | 20           | 33.4 | 16         | 26.6 |
|   | Streptomycin                  | 19             | 31.7 | 25           | 41.7 | 16         | 26.6 |
| Fluoroquinolones  | Ciprofloxacin                 | 55             | 91.6 | 5            | 8.4  | 0          | 0    |
| Quinolones  | Nalidixic acid                | 13             | 21.6 | 47           | 78.4 | 0          | 0    |
| Sulfonamides  | Trimethoprim-Sulfamethoxazole | -              | -    | 12           | 20   | 48         | 80   |
| Tetracyclines   | Doxycycline                   | 0              | 0    | 0            | 0    | 60         | 100  |
| Macrolides  | Erythromycin                  | -              | -    | 20           | 33.4 | 40         | 66.6 |
| Glycopeptides   | Vancomycin                    | 59             | 98.3 | 1            | 1.7  | 0          | 0    |
| Chi-square  |                               | 424.24         |      | 218.84       |      | 260.11     |      |
| p-value   |                               | <0.0001        |      | <0.0001      |      | <0.0001    |      |



**Figure 7** The heat-map clarifies the antimicrobial resistance profile of the obtained *B. cereus* isolates.



**Figure 8** The heat-map clarifies the correlation coefficient ( $r$ ) among various tested antibiotics in the present study. The intensity of colors indicates the numerical value of the correlation coefficient ( $r$ ). Orange, and blue color refers to the negative and positive correlations, respectively.

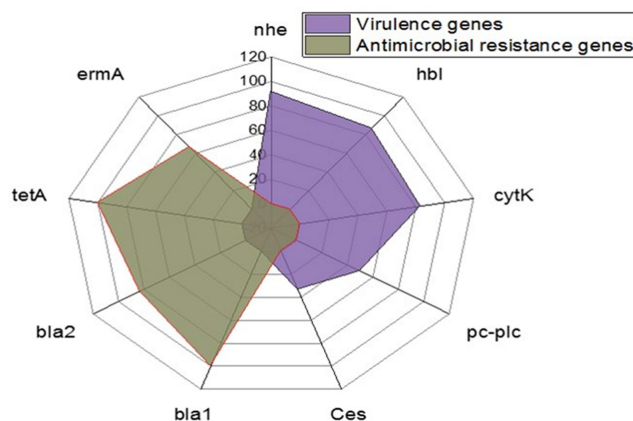
**Table 3** Dissemination of Virulence and Antibiotic Resistance Genes in the Isolated *B. cereus* (n=60)

| Gene Function               | Gene          | No. of Positive | %    | Chi-Square          |
|-----------------------------|---------------|-----------------|------|---------------------|
|                             |               |                 |      | p-value             |
| Virulence genes             | <i>nhe</i>    | 55              | 91.6 | 23.169<br>0.0001171 |
|                             | <i>hbl</i>    | 52              | 86.6 |                     |
|                             | <i>cytK</i>   | 50              | 83.4 |                     |
|                             | <i>pc-plc</i> | 30              | 50   |                     |
|                             | <i>ces</i>    | 20              | 33.4 |                     |
| Antibiotic-resistance genes | <i>bla1</i>   | 60              | 100  | 5.2381<br>0.1552    |
|                             | <i>bla2</i>   | 50              | 83.3 |                     |
|                             | <i>tetA</i>   | 60              | 100  |                     |
|                             | <i>ermA</i>   | 40              | 66.6 |                     |

and *ermA* genes. Besides, 26.6% (16/60) of the obtained isolates expressed multidrug resistance to seven antimicrobial classes and harbored *bla1*, *bla2*, *tetA*, and *ermA* genes. In addition, 13.3% (8/60) of the retrieved *B. cereus* isolates are MDR to five antimicrobial classes and possessed *bla1*, *bla2*, and *tetA* genes, as illustrated in Table 4. The multiple antibiotic resistance (MAR) index values in this study ( $\geq 0.2$ ) showed multiple resistance patterns indicating that the retrieved isolates were originated from high-risk contamination, as illustrated in Table 4. The correlation coefficient ( $r$ ) was assessed among the detected resistance genes in *B. cereus* isolates and various tested antibiotics. The results demonstrated significant positive correlations between: *bla1* gene, AMX, PEN, and AMC ( $r=1$ ); *bla2* gene, ctx, and caz ( $r=1$ ); *ermA* gene and E ( $r=1$ ); *tetA* gene and DOX ( $r=1$ ); *bla1* gene and CAZ ( $r=0.99$ ); *bla1* gene and CTX ( $r=0.98$ ); *bla2* gene, AMX, and PEN ( $r=0.98$ ); *bla2* and AMC ( $r=0.96$ ) as shown in Figure 10.

## Pathogenicity Test

The cumulative mortality, morbidity, and pathological lesions were regularly observed in the challenged fish for 14 days post-inoculation. Herein, the challenged fish displayed dose-dependent mortalities and characteristic lesions of external hemorrhages, exophthalmia, and ascites, similar to those observed during the natural infection. Surprisingly, none of the control group fish showed any mortalities or pathological lesions. Moreover, the PM examination of the infected fish

**Figure 9** The occurrence of virulence and antibiotic resistance genes in the isolated *B. cereus* strains.

**Table 4** The Phenotypic and Genotypic Resistance Profiles of the Isolated *B. cereus* Strains (n = 60)

| No. of Isolates | %    | Type of Resistance | Phenotypic Resistance Profiles  | Antibiotic Resistance Genes                               | MAR Index |
|-----------------|------|--------------------|---|---|-----------|
| 24              | 40   | MDR                | <b>Penicillins:</b> PEN and AMX<br><b>β-Lactam- β-lactamase inhibitor combination:</b> AMC<br><b>Cephalosporins:</b> CTX and CAZ<br><b>Tetracyclines:</b> DOX<br><b>Macrolides:</b> E<br><b>Sulfonamides:</b> SXT                                     | <i>bla1</i> , <i>bla2</i> , <i>tetA</i> , and <i>ermA</i> | 0.57      |
| 16              | 26.6 | MDR                | <b>Penicillins:</b> PEN and AMX<br><b>β-Lactam- β-lactamase inhibitor combination:</b> AMC<br><b>Cephalosporins:</b> CTX and CAZ<br><b>Tetracyclines:</b> DOX<br><b>Macrolides:</b> E<br><b>Sulfonamides:</b> SXT<br><b>Aminoglycosides:</b> CN and S | <i>bla1</i> , <i>bla2</i> , <i>tetA</i> , and <i>ermA</i> | 0.71      |
| 8               | 13.3 | MDR                | <b>Penicillins:</b> PEN and AMX<br><b>β-Lactam- β-lactamase inhibitor combination:</b> AMC<br><b>Cephalosporins:</b> CTX and CAZ<br><b>Tetracyclines:</b> DOX<br><b>Sulfonamides:</b> SXT   | <i>bla1</i> , <i>bla2</i> , and <i>tetA</i> ,             | 0.50      |
| 7               | 11.6 | MDR                | <b>Penicillins:</b> PEN and AMX<br><b>β-Lactam- β-lactamase inhibitor combination:</b> AMC<br><b>Tetracyclines:</b> DOX   | <i>bla1</i> and <i>tetA</i> ,                             | 0.28      |
| 3               | 5    | Resistant          | <b>Penicillins:</b> PEN and AMX<br><b>Tetracyclines:</b> DOX  | <i>bla1</i> and <i>tetA</i> ,                             | 0.21      |
| 2               | 3.33 | MDR                | <b>Penicillins:</b> PEN and AMP<br><b>Cephalosporins:</b> CTX and CAZ<br><b>Tetracyclines:</b> DOX  | <i>bla1</i> , <i>bla2</i> , and <i>tetA</i>               | 0.35      |

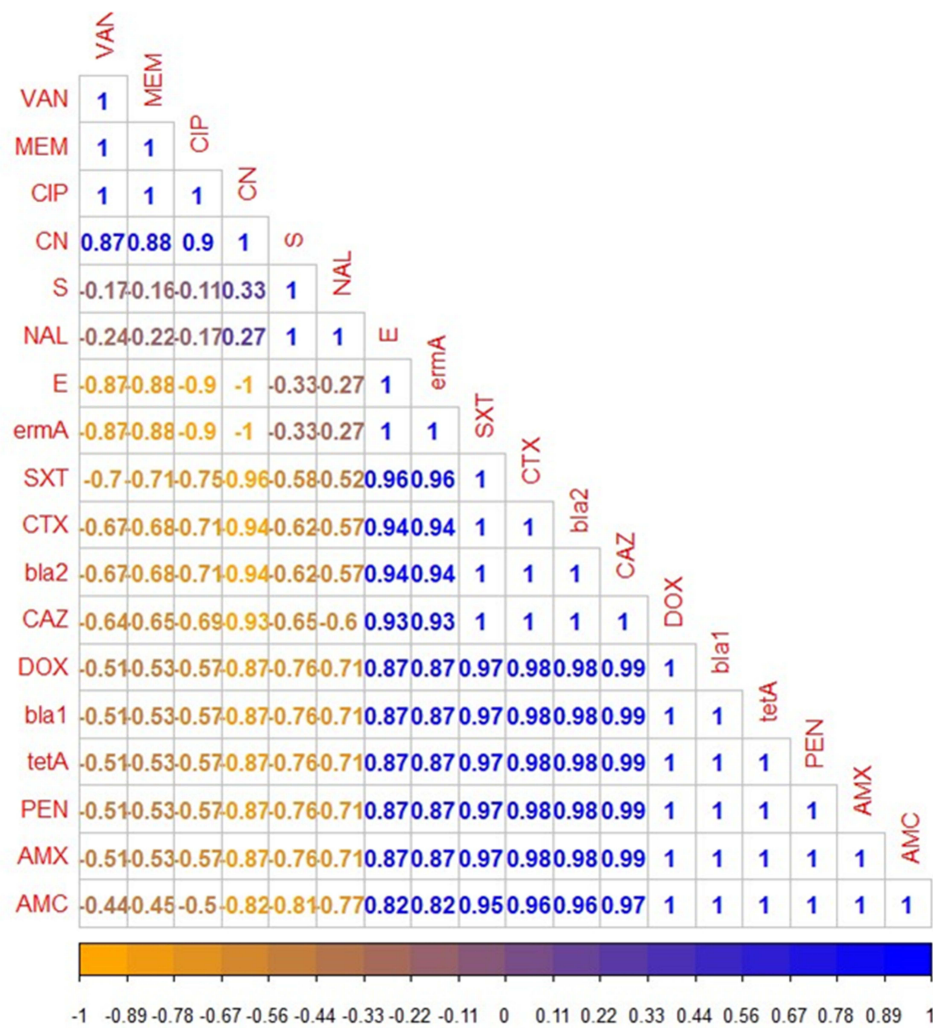
**Abbreviations:** MDR, multi drug resistant; MAR, multiple antibiotic resistance.

displayed predictable signs of septicemia manifested by an enlarged liver, congested kidney, and serous fluid exudates in the abdominal cavity.

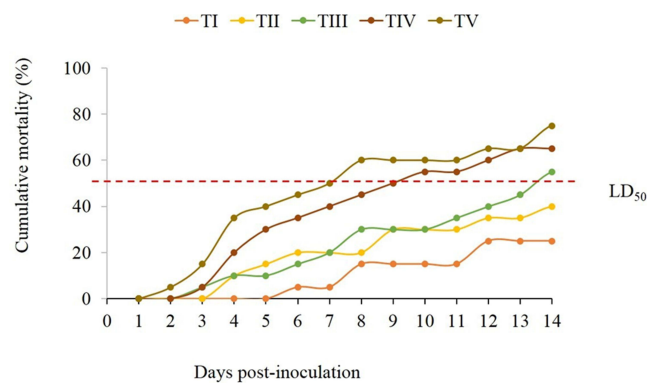
The results also clarified that cumulative deaths were relatively correlated with the inoculated doses and inherited virulence genes, as a higher mortality rate (75%) was recorded in the  $T_V$  group that received a bacterial dose of  $10^8$  CFU mL<sup>-1</sup>, followed by  $T_{IV}$ - $T_I$  groups that inoculated by  $10^7$ - $10^4$  CFU mL<sup>-1</sup>, respectively (Figure 11). The bacterial dose that induces ~50% mortality in the challenged *T. zillii* (LD<sub>50</sub>) was  $10^6$  CFU mL<sup>-1</sup>. Bacteriologically, *B. cereus* was successfully recovered from the pathognomonic lesions of moribund and freshly dead fish. The identification was confirmed based on its biochemical properties and molecular typing.

## Discussion

*Bacillus cereus* is a ubiquitous bacterium of public health concern and has recently been categorized as a fish-threatening pathogen, causing huge economic losses in the aquaculture sector.<sup>28</sup> In the current study, the results of clinical and post-mortem inspections were congruent with Ali<sup>27</sup> who observed deep hemorrhagic skin ulcers, unilateral exophthalmia, tail



**Figure 10** The heat-map illustrates the correlation coefficient ( $r$ ) among the antibiotic resistance genes detected in the recovered *B. cereus* isolates and various tested antibiotics. The intensity of colors indicates the numerical value of the correlation coefficient ( $r$ ). Orange, and blue color refers to the negative and positive correlations, respectively.



**Figure 11** Cumulative mortality of *Tilapia zillii* subjected to intraperitoneal injection with different doses of *B. cereus* (T<sub>1</sub>-T<sub>5</sub>, fish groups received a bacterial dose of  $10^4$ - $10^8$  CFU mL<sup>-1</sup>, respectively). LD<sub>50</sub> is a bacterial dose ( $10^6$  CFU mL<sup>-1</sup>) that induces ~50% (exactly 55%) mortality in the challenged fish.



rot, and congested parenchymatic organs in white seabream (*Diplodus sargus*) suffered from a mixed infection with *Staphylococcus epidermidis* and *B. cereus*. Similar results have been reported in infected stinging catfish,<sup>28</sup> and seabass with *B. cereus*.<sup>26</sup> Consistent with the present findings, diffuse necrotizing dermatitis was observed in the naturally infected fish with *B. cereus*.<sup>49</sup>

The recorded ante- and post-mortem lesions are a pre-determined consequence of the fish's immune response to the invading pathogen and may refer to successful colonization and reproduction of the isolated bacteria, in agreement with Aboyadak.<sup>26</sup> The variety of lesions also indicates the severity of the current infection and is primarily attributable to the virulence traits encoded by bacteria. *B. cereus* has been found to be related to the Epizootic Ulcerative Syndrome in *Datnioides microlepis*.<sup>50</sup> *B. cereus* possessed several virulence determinants like cytotoxin K, hemolysins, enterotoxins, and phospholipase, which together may lead to disease induction.<sup>51</sup> These toxic substances have noxious effects on host tissues through hemagglutination, impaired vascular permeability, apoptosis, and skin necrosis.<sup>52</sup>

Regarding the bacteriological examination, all recovered isolates displayed the typical phenotypic characteristics of *B. cereus*, consistent with Osman<sup>15</sup> and Gdoura-Ben.<sup>53</sup> The isolates also showed harmony in their morphology with identical biochemical profiles. Moreover, the results obtained by the VITEK2 GP and BCL cards were highly comparable and nearly similar to those obtained by conventional biochemical assays. Herein, the VITEK 2 compact system showed a high probability of identifying *B. cereus* up to 100%. The system was widely acceptable for the detection and distribution of these bacteria and other foodborne pathogens in fish and ready-to-eat products.<sup>54</sup>

In this study, *B. cereus* was not isolated from the substantially healthy *M. seheli*, but the bacteria were recovered from moribund diseased fish with a total prevalence of 25%. Our findings were comparable to those reported by Ali,<sup>27</sup> who reported increased mortality (38.33%) in *D. sargus* broodstock suffered from mixed infection with *S. epidermidis* and *B. cereus*. A previous bacteriological study of Chandra<sup>28</sup> suggested that *B. cereus* infection is responsible for 97% of stinging catfish mass mortalities at Burdwan farms in West Bengal, India. *B. cereus* is occasionally referred to as a pathogen of fish.<sup>12</sup> It is a ubiquitous environmental pathogen capable of causing disease in immunocompromised hosts. It is systematically accused of causing severe infection and tissue degeneration in affected fish species.<sup>26</sup>

Regarding the intensity of *B. cereus* among different examined organs, the liver was the main affected organ, then the kidney and gills, with no significant difference ( $p < 0.05$ ). These results are in agreement with those reported by Younes<sup>55</sup> who mentioned that hepatopancreas, kidney, and gills were the most predominant infected organs with *B. cereus*. Differences in prevalence could be attributed to geographic variation, environmental stressors, fish species, and sampling time during the study.

In the current study, the PCR results showed that all the examined isolates harbored a conserved *gyrB* gene of *B. cereus*, in agreement with Yamada<sup>32</sup> who stated that *gyrB* was a reliable diagnostic marker and had superior use over the *16S rRNA* gene to distinguish *B. cereus* from other closely related species. Phylogenetic analyses of the amplified amplicon displayed a remarkable genetic identity and cross-lineage to other *B. cereus* strains from different origins, which may indicate the possible influence of global trade in infection transmission, particularly in the absence of restriction measures for import and export and non-compliance with guidelines on aquaculture advisory services and transport of live fish seeds.<sup>56</sup> Herein, the final alignments consisted of 1137 bp, where the sites 1108 and 29 were the most conserved sites and variable sites, respectively. Besides, this sequence was found to contain five open reading frames (ORFs 1–5), which may distinguish these bacteria from other relevant species within the same family.

Concerning the phenotypic assessment of *B. cereus* virulence factors, 90% of the tested isolates showed different patterns (week-moderate-strong) of biofilm formation, in line with Osman<sup>15</sup> who observed the same phenomena in 84.7% of *Bacillus* species recovered from various meat products. Indeed, most members of the genus *Bacillus* are firmly attached to the biotic and non-biotic surfaces by forming biofilms.<sup>57</sup> Therefore, the reported biofilm activity of the tested isolates indicates their strong association with the host tissue and thus increased disease prevalence and incidence among cultured groups. It also reflects the hazard impact and public health concerns of *B. cereus* as a foodborne pathogen that may cause severe illness, particularly in people who eat undercooked or raw infected fish.<sup>58</sup> Biofilm is most likely to be important because it persists in food processing equipment and protects spores and vegetative fragile cells from inactivation by biocides.<sup>59</sup>

Surprisingly, all tested isolates of *B. cereus* showed strong hemolytic activity on sheep blood agar. The present investigation is consistent with the previous findings of Beecher and Wong<sup>60</sup> and Hwang and Park.<sup>61</sup> Accordingly, the surge in hemolytic activity in this study may be concomitant with some related-virulence genes inherited by the bacteria,<sup>62</sup> which still requires further investigation. It was reported that most of the foodborne isolates showed strong hemolytic activity and that most isolates of *B. cereus* retrieved from different food sources showed hemolysis.<sup>63</sup> Likewise, all tested isolates were positive for lecithinase reaction and showed opaque zone around colonies on egg yolk agar, in agreement with Hwang and Park,<sup>61</sup> who reported that 26% and 10% of *B. cereus* isolates retrieved from infant foods showed low and high lecithinase activities, respectively. Lecithinase has been proposed as a presumptive virulence tool in systemic infection with enterotoxin,<sup>64</sup> and could often be entangled in hemolysis.<sup>65</sup> *Bacillus* species are known to produce various exoenzymes like hemolysin, gelatinase, lecithinase, enterotoxins, and phospholipase that are responsible for food poisoning and serious human illness.<sup>66</sup>

Regarding the antibiogram pattern, vancomycin, meropenem, and ciprofloxacin exhibited promising antimicrobial activity against the tested *B. cereus* isolates. Our results are consistent with those reported by Chandra<sup>28</sup> who observed a higher sensitivity of *B. cereus* isolates to ciprofloxacin. In contrast, the tested *B. cereus* isolates were resistant to penicillins, sulfonamides,  $\beta$ -Lactam- $\beta$ -lactamase-inhibitor combination, cephalosporins, nalidixic acid, and macrolides. Nearly similar findings were reported by Savić<sup>67</sup> and Mousa.<sup>68</sup> The present findings affirm the emergence of MDR isolates of *B. cereus* in aquaculture sectors and set the fact that the food chain can be a major route of transmission of MDR bacteria between animals and humans.<sup>69</sup> The random use of antibiotics to treat emerging diseases has dire consequences in the aquaculture industry, as it may lead to the existence of MDR strains.<sup>70–72</sup> Hence, the regimen use of an antibiotic susceptibility testing system is important for selecting specific effective antibiotics and overcoming such problems.<sup>22,73</sup>

As for the dissemination of virulence genes between *B. cereus* isolates, there was a significant variation ( $p < 0.05$ ) in the existence of virulence genes, where the *nhe*, *hbl*, and *cytK* genes were the most prevalent. These results are consistent with those reported by Osman,<sup>15</sup> who detected several genes encoding hemolytic (*hbl*) and non-hemolytic (*nhe*) enterotoxins and cytotoxin K (*cytK*) in *B. cereus* isolates recovered from some poultry and beef meat. The *nhe* and *cytK* genes are primarily virulence genes that induce enterotoxins production in *B. cereus*.<sup>74</sup> High prevalence of the *nhe* and *hbl* genes complex has been previously reported in *B. cereus* isolates from environmental and food origins.<sup>75</sup> In the current study, all tested isolates of *B. cereus* contained one or more enteric genes reflecting their public health importance and their potential role in inducing diarrheal disease in humans, in agreement with Smith.<sup>76</sup> About 73% of food poisoning strains contained one or more HBL complex genes.<sup>77</sup> Interestingly, the *nhe* gene was the most dominant HBL complex gene inconsistent with previous findings of Tewari.<sup>78</sup>

Herein, the *cytK* enterotoxin gene was detected in 83.4% of the recovered *B. cereus* isolates, in agreement with Ngamwongsatit,<sup>79</sup> while others found it in a smaller proportion of their isolates.<sup>80</sup> Likewise, the *ces* virulence gene was determined in 33.4% of *B. cereus* isolates, which differed greatly from the previous findings of Abdeen<sup>81</sup> who detected *ces* genes in 50% of tested isolates. The *ces* gene, found on the megaplasmid of *B. cereus*, is accountable for the production of the cereulide toxin that causes foodborne illness and emesis in humans.<sup>13</sup> This toxin is thermostable, active within a wide range of pH (2–11), and abundantly produced during long-term storage of contaminated food.<sup>82</sup> Meanwhile, the prevalence of *pc-plc* gene in this study was 50%, which is quite similar to the results of Abdeen.<sup>81</sup> The *pc-plc* gene is a major virulence determinant for *B. cereus* toxins which embraces the cytolytic unit cereolysin AB.<sup>83</sup> The gene has hemolytic activity and a vital role in toxin production.<sup>84</sup> The predominance of both *ces* and *pc-plc* genes among the tested isolates emphasizes their virulence and reflects the public health significance of this study.

Concerning the correlation between the genotypic and phenotypic multidrug resistance, most of the retrieved isolates showed multidrug resistance to six or more antimicrobial classes and carried *bla1*, *bla2*, *tetA*, and *ermA* resistance genes; these results came in harmony with Fiedler<sup>19</sup> and Bianco.<sup>85</sup> Intriguingly, the MAR index values in this study were  $\geq 0.2$ , alarmingly reflecting that the recovered isolates derived from high-risk origins of contamination. *bla1* and *bla2* are chromosomal genes of *Bacillus* species that encoding the penicillinase 2a group and metalloenzyme functional group 3.<sup>86</sup> The *bla1* possesses penicillinase activity, while *bla2* seems to be a cephalosporinase, penicillinase and carbapenem-hydrolysis.<sup>87</sup> Herein, both *bla1* and *bla2* genes are entirely expressed in all isolates, which is nearly similar to those

reported by Tahmasebi.<sup>88</sup> The resistance of the recovered isolates to amoxicillin-clavulanic acid may be attributed to the synergism of *bla1* and *bla2* genes. Moreover, several previous studies emphasized the resistance of *B. cereus* to  $\beta$ -Lactam- $\beta$ -lactamase-inhibitor combination.<sup>19,89,90</sup> In contrast to our findings, Chen<sup>91</sup> reported an impairment of *bla1* transcription in *B. cereus* group that harbored *bla* promoter-lacZ transcriptional fusions and attributed that to the beta-galactosidase activity of the group.

Foreseeably, all recovered strains that harbored *tetA* and *ermA* genes showed extensive inhibition regions for tetracycline and erythromycin, proposing a close relationship between *tetA* resistance gene and phenotypic resistance against tetracycline. The present investigations are congruent with the previous results of Park.<sup>37</sup> Overall, antibiotic resistance (AMR) is an inescapable problem worldwide and is closely associated with high mortality and medical crisis.<sup>92</sup> AMR is usually caused by the transmission of an antibiotic resistance gene among bacteria, even distantly related ones.<sup>93</sup> Since there is no obvious MAR<sub>index</sub> standard for *B. cereus*, the assessment of human health risks has become unfeasible due to the newly emergence of MDR isolates of *B. cereus* in aquaculture sectors. These facts maximize the proper use of antibiotics for aquatic diseases control and reflect the significance of routine antimicrobial susceptibility testing in limiting the spread of MDR isolates.

With respect to the pathogenicity assay, fish infected with *B. cereus* presented variable mortality in direct proportion to the inoculated doses and displayed the same clinical signs that were found in the naturally infected fish. Our findings have almost resembled a previous study of Younes<sup>55</sup> that reported obvious skin lesions, popeyes, abdominal distension, and hemorrhagic patches on the skin and gills of experimentally infected *C. gariepinus* with *B. cereus*. Clinical and post-mortem signs observed here were almost similar to the previous findings in white seabream experimentally infected with *B. cereus*.<sup>27</sup> Herein, the mean lethal dose (LD<sub>50</sub>) for the isolated *B. cereus* was 10<sup>6</sup> CFU mL<sup>-1</sup>, in parallel with a previous study of Younes,<sup>55</sup> which emphasized that the LD<sub>50</sub> of *B. cereus* was about 2.7×10<sup>6</sup> CFU mL<sup>-1</sup>. Our results were relatively high compared to Chandra<sup>28</sup> who demonstrated that a dose of 3.6×10<sup>5</sup> CFU fish<sup>-1</sup> was adjacent to LD<sub>50</sub> value and considered suitable for the experimental infection of stinging catfish. Accordingly, affected tissue dissociation could be either related to inherited virulence genes or to the lethal and degenerative effect of bacterial exotoxins and active enzymes, which boost tissue necrosis and cell damage.<sup>50,94</sup>

In conclusion, as far as we know, this is the first study that highlighted the new emergence of MDR *B. cereus* in *M. seheli* that alarmingly reveals a significant threat to both human health and the aquaculture sector. Newly emerging MDR *B. cereus* in *M. seheli* commonly harbor *nhe*, *hbl*, *cytK*, and *pc-plc* virulence genes and *bla1*, *bla2*, *tetA*, and *ermA* resistance genes. The consistent application of antimicrobial susceptibility testing is essential for screening the newly emerging MDR strains and detecting the antibiotic of choice. Vancomycin and meropenem displayed a hopeful in-vitro antimicrobial activity against the recovered MDR *B. cereus* isolates from fish. The combination of phenotypic and molecular-based detection techniques is a reliable epidemiological tool for the detection of newly emerging MDR *B. cereus* strains in fish.

## Author Contributions

All authors made a significant contribution to the work reported, whether that is in the conception, study design, execution, acquisition of data, analysis and interpretation, or in all these areas; took part in drafting, revising or critically reviewing the article; gave final approval of the version to be published; have agreed on the journal to which the article has been submitted; and agree to be accountable for all aspects of the work.

## Disclosure

The authors declare no conflict of interest.

## References

1. Abouelmaatti RR, Algammal AM, Li X, Ma J, Abdelnaby EA, Elfeil WM. Experimental immunology cloning and analysis of Nile tilapia Toll-like receptors type-3 mRNA. *Central Eur J Immunol*. 2013;3(3):277–282. doi:10.5114/ceji.2013.37740
2. FAO. *STATE OF WORLD FISHERIES and AQUACULTURE 2020 (RUSSIAN EDITION): Sustainability in Action*. FOOD & AGRICULTURE ORG; 2020.
3. Boyd C, McNevin A. *Aquaculture, Resource Use, and the Environment*. John Wiley & Sons; 2015.

4. Molenaar EJ, Caddell R. International fisheries law: achievements, limitations and challenges. *Strengthen Int Fish Law Era Changing Oceans*. 2019;3–10. doi:10.5040/9781509923373
5. Liu OR, Molina R, Wilson M, Halpern BS. Global opportunities for mariculture development to promote human nutrition. *PeerJ*. 2018;6:e4733. doi:10.7717/peerj.4733
6. Saleh M. Capture-based aquaculture of mullets in Egypt. Capture-based aquaculture. Global overview. *FAO Fish Tech Paper*. 2008;508:109–126.
7. Eisawy A. Status of aquaculture in the Arab Republic of Egypt. Paper presented at: FAO, Rome (Italy). Fisheries Dept. FAO/CIFA Symposium on Aquaculture in Africa; September 30; 1975; 1975; Accra (Ghana).
8. Soliman NF. *Aquaculture in Egypt Under Changing Climate*. Alexandria, Egypt: Alexandria Research Center for Adaptation to Climate Change (ARCA); 2017.
9. Leung TL, Bates AE, Dulvy N. More rapid and severe disease outbreaks for aquaculture at the tropics: implications for food security. *J Appl Ecol*. 2013;50(1):215–222. doi:10.1111/1365-2644.12017
10. Faruk M, Ali M, Patwary Z. Evaluation of the status of use of chemicals and antibiotics in freshwater aquaculture activities with special emphasis to fish health management. *J Bangla Agric Univ*. 2008;6(2):381–390. doi:10.3329/jbau.v6i2.4838
11. Ovcharenko M. Microparasites of worldwide mullets. *Ann Parasitol*. 2015;61(4):229–239. doi:10.17420/ap6104.12
12. Baya A, Li T, Lupiani B, Hetrick F. *Bacillus cereus*, a pathogen for striped bass. Paper presented at: Eastern Fish Health and American Fisheries Society Fish Health Section Workshop; 1992.
13. Stenfor Arnesen LP, Fagerlund A, Granum PE. From soil to gut: *Bacillus cereus* and its food poisoning toxins. *FEMS Microbiol Rev*. 2008;32(4):579–606. doi:10.1111/j.1574-6976.2008.00112.x
14. Ramarao N, Tran S-L, Marin M, Vidic J. Advanced methods for detection of *Bacillus cereus* and its pathogenic factors. *Sensors*. 2020;20(9):2667. doi:10.3390/s20092667
15. Osman KM, Kappell AD, Orabi A, et al. Poultry and beef meat as potential seedbeds for antimicrobial resistant enterotoxigenic *Bacillus* species: a materializing epidemiological and potential severe health hazard. *Sci Rep*. 2018;8(1):1–15. doi:10.1038/s41598-018-29932-3
16. Bottone EJ. *Bacillus cereus*, a volatile human pathogen. *Clin Microbiol Rev*. 2010;23(2):382–398. doi:10.1128/CMR.00073-09
17. Hoffmaster AR, Hill KK, Gee JE, et al. Characterization of *Bacillus cereus* isolates associated with fatal pneumonias: strains are closely related to *Bacillus anthracis* and harbor *B. anthracis* virulence genes. *J Clin Microbiol*. 2006;44(9):3352–3360. doi:10.1128/JCM.00561-06
18. Hilliard NJ, Schelonka RL, Waites KB. *Bacillus cereus* bacteremia in a preterm neonate. *J Clin Microbiol*. 2003;41(7):3441–3444. doi:10.1128/JCM.41.7.3441-3444.2003
19. Fiedler G, Schneider C, Igbinosa EO, et al. Antibiotics resistance and toxin profiles of *Bacillus cereus*-group isolates from fresh vegetables from German retail markets. *BMC Microbiol*. 2019;19(1):1–13. doi:10.1186/s12866-019-1632-2
20. Citron DM, Appleman MD. In vitro activities of daptomycin, ciprofloxacin, and other antimicrobial agents against the cells and spores of clinical isolates of *Bacillus* species. *J Clin Microbiol*. 2006;44(10):3814–3818. doi:10.1128/JCM.00881-06
21. Jensen LB, Baloda S, Boye M, Aarestrup FM. Antimicrobial resistance among *Pseudomonas* spp. and the *Bacillus cereus* group isolated from Danish agricultural soil. *Environ Int*. 2001;26(7–8):581–587. doi:10.1016/S0160-4120(01)00045-9
22. Algammal AM, Mabrok M, Sivaramasamy E, et al. Emerging MDR-*Pseudomonas aeruginosa* in fish commonly harbor opr L and tox A virulence genes and bla TEM, bla CTX-M, and tet A antibiotic-resistance genes. *Sci Rep*. 2020;10(1):1–12. doi:10.1038/s41598-020-72264-4
23. Algammal AM, Hetta HF, Elkesh A, et al. Methicillin-resistant *Staphylococcus aureus* (MRSA): one health perspective approach to the bacterium epidemiology, virulence factors, antibiotic-resistance, and zoonotic impact. *Infect Drug Resist*. 2020;13:3255. doi:10.2147/IDR.S272733
24. Pychynski T, Malanowska T, Kozłowski M. Bacterial flora in branchionecrosis of carp (particularly *Bacillus cereus* and *Bacillus subtilis*). *Med Weter*. 1981;37(12):742–743.
25. Yiagnisis M, Athanassopoulou F. Bacteria isolated from diseased wild and farmed marine fish in Greece. *Recent Adv Fish Farms*. 2011;27(2):61–69.
26. Aboyadak IM, Sabry NM, Ali NG, El-Sayed HS. Isolation of *Staphylococcus epidermidis*, *Bacillus cereus* and *Pseudomonas stutzeri* from diseased European sea bass (*Dicentrarchus labrax*) for the first time in Egypt. *Egypt J Aquatic Biol Fish*. 2016;20(4):103–114. doi:10.21608/ejabf.2016.11182
27. Ali NG, Aboyadak IM, El-Sayed HS. Chemotherapeutic control of Gram-positive infection in white sea bream (*Diplodus sargus*, Linnaeus 1758) broodstock. *Vet World*. 2019;12(2):316. doi:10.14202/vetworld.2019.316-324
28. Chandra G, Bhattacharjee I, Chatterjee S. *Bacillus cereus* infection in stinging catfish, *Heteropneustes fossilis* (Siluriformes: heteropneustidae) and their recovery by *Argemone mexicana* seed extract. *Iran J Fish Sci*. 2015;14(3):741–753.
29. Schäperclaus W. *Fish Diseases*. Vol. 1. CRC Press; 1992.
30. Maturin L, Peeler JT. *Bacteriological Analytical Manual*. US Food and Drug Administration; 2001.
31. Navas M, Pincus DH, Wilkey K, et al. Identification of aerobic Gram-positive bacilli by use of Vitek MS. *J Clin Microbiol*. 2014;52(4):1274–1277. doi:10.1128/JCM.03483-13
32. Yamada S, Ohashi E, Agata N, Venkateswaran K. Cloning and nucleotide sequence analysis of *gyrB* of *Bacillus cereus*, *B. thuringiensis*, *B. mycoides*, and *B. anthracis* and their application to the detection of *B. cereus* in rice. *Appl Environ Microbiol*. 1999;65(4):1483–1490. doi:10.1128/AEM.65.4.1483-1490.1999
33. Tamura K, Stecher G, Peterson D, Filipowski A, Kumar S. MEGA6: molecular evolutionary genetics analysis version 6.0. *Mol Biol Evol*. 2013;30(12):2725–2729. doi:10.1093/molbev/mst197
34. Osman KM, Samir A, Abo-Shama UH, Mohamed EH, Orabi A, Zolnikov T. Determination of virulence and antibiotic resistance pattern of biofilm producing *Listeria* species isolated from retail raw milk. *BMC Microbiol*. 2016;16(1):1–13. doi:10.1186/s12866-016-0880-7
35. Wiwat C, Thiramanas R. Detection of hemolysin BL gene of *Bacillus cereus* isolates. *Mahidol Univ J Pharm Sci*. 2014;41:22–30.
36. Quinn P, Markey BK, Carter M, Donnelly W, Leonard F. Veterinary microbiology and microbial disease. *Science*. 2002;295:1892–1895. doi:10.1126/science.1068732
37. Park Y-B, Kim J-B, Shin S-W, et al. Prevalence, genetic diversity, and antibiotic susceptibility of *Bacillus cereus* strains isolated from rice and cereals collected in Korea. *J Food Prot*. 2009;72(3):612–617. doi:10.4315/0362-028X-72.3.612
38. CLSI. *Bacillus*. In: *Clinical and Laboratory Standards Institute: Performance Standards for Antimicrobial Susceptibility Testing: 27th Ed 424 Informational Supplement*. CLSI; 2017. CLSI Doc. M100-S20 (2017).



39. Magiorakos A-P, Srinivasan A, Carey R, et al. Multidrug-resistant, extensively drug-resistant and pandrug-resistant bacteria: an international expert proposal for interim standard definitions for acquired resistance. *Clin Microbiol Infect.* **2012**;18(3):268–281. doi:10.1111/j.1469-0691.2011.03570.x
40. Krumperman PH. Multiple antibiotic resistance indexing of *Escherichia coli* to identify high-risk sources of fecal contamination of foods. *Appl Environ Microbiol.* **1983**;46(1):165–170. doi:10.1128/aem.46.1.165-170.1983
41. Ehling-Schulz M, Guinebretiere M-H, Monthán A, Berge O, Fricker M, Svensson B. Toxin gene profiling of enterotoxic and emetic *Bacillus cereus*. *FEMS Microbiol Lett.* **2006**;260(2):232–240. doi:10.1111/j.1574-6968.2006.00320.x
42. Schraft H, Griffiths M. Specific oligonucleotide primers for detection of lecithinase-positive *Bacillus* spp. by PCR. *Appl Environ Microbiol.* **1995**;61(1):98–102. doi:10.1128/aem.61.1.98-102.1995
43. Sergeev N, Distler M, Vargas M, Chizhikov V, Herold KE, Rasooly A. Microarray analysis of *Bacillus cereus* group virulence factors. *J Microbiol Methods.* **2006**;65(3):488–502. doi:10.1016/j.mimet.2005.09.013
44. Chen Y, Tenover FC, Koehler TM.  $\beta$ -Lactamase gene expression in a penicillin-resistant *Bacillus anthracis* strain. *Antimicrob Agents Chemother.* **2004**;48(12):4873–4877. doi:10.1128/AAC.48.12.4873-4877.2004
45. Rather MA, Aulakh RS, Gill JPS, Mir AQ, Hassan MN. Detection and sequencing of plasmid encoded tetracycline resistance determinants (tetA and tetB) from food-borne *Bacillus cereus* isolates. *Asian Pac J Trop Med.* **2012**;5(9):709–712. doi:10.1016/S1995-7645(12)60111-4
46. Adimpong DB, Sørensen KI, Thorsen L, et al. Antimicrobial susceptibility of *Bacillus* strains isolated from primary starters for African traditional bread production and characterization of the bacitracin operon and bacitracin biosynthesis. *Appl Environ Microbiol.* **2012**;78(22):7903–7914. doi:10.1128/AEM.00730-12
47. Meyers TR. *Fish Pathology Section Laboratory Manual*. Alaska Department of Fish and Game, Commercial Fisheries Division; **2000**.
48. Sutton S. Measurement of microbial cells by optical density. *J Validation Technol.* **2011**;17(1):46–49.
49. Austin B. Emerging bacterial fish pathogens. *Bull Eur Assoc Fish Pathol.* **1999**;19(6):231–234.
50. Tongyoo N, Thongsang P, Kumphakarn R, Moungrmai R. *Bacillus cereus* and *B. pumilus* associated with epizootic ulcerative syndrome in Siamese Tiger fish (*Danio rerio*). Paper presented at: 31st Congress on Science and Technology of Thailand at Suranaree University of Technology; **2005**.
51. Visiello R, Colombo S, Carretto E. *Bacillus cereus* hemolysins and other virulence factors. In: *The Diverse Faces of Bacillus Cereus*. Elsevier; **2016**:35–44.
52. Kim M-J, Han J-K, Park J-S, et al. Various enterotoxin and other virulence factor genes widespread among *Bacillus cereus* and *Bacillus thuringiensis* strains. *J Microbiol Biotechnol.* **2015**;25(6):872–879. doi:10.4014/jmb.1502.02003
53. Gdoura-Ben Amor M, Siala M, Zayani M, et al. Isolation, identification, prevalence, and genetic diversity of *Bacillus cereus* group bacteria from different foodstuffs in Tunisia. *Front Microbiol.* **2018**;9:447. doi:10.3389/fmicb.2018.00447
54. Mursyidah R, Zulfa A, Laith A. Isolation and identification bacillus bacteria in tilapia (*Oreochromis niloticus*) using the Vitek-2 compact. Paper presented at: IOP Conference Series: Earth and Environmental Science; **2021**.
55. Younes AM, Gaafar AY, Alaa Eldeen Z, et al. Isolation and pathogenicity determination of *Bacillus cereus* associated with ulcer formation in African catfish *Clarias gariepinus*. *Asian J Anim Sci.* **2011**;15:12–18.
56. Ababouch L. Assuring fish safety and quality in international fish trade. *Mar Pollut Bull.* **2006**;53(10–12):561–568. doi:10.1016/j.marpolbul.2006.08.011
57. Majed R, Faille C, Kallassy M, Gohar M. *Bacillus cereus* biofilms—same, only different. *Front Microbiol.* **2016**;7:1054. doi:10.3389/fmicb.2016.01054
58. Cihan AC, Karaca B, Ozel BP, Kilic T. Determination of the biofilm production capacities and characteristics of members belonging to Bacillaceae family. *World J Microbiol Biotechnol.* **2017**;33(6):118. doi:10.1007/s11274-017-2271-0
59. Wijman JG, de Leeuw PP, Moezelaar R, Zwietering MH, Abee T. Air-liquid interface biofilms of *Bacillus cereus*: formation, sporulation, and dispersion. *Appl Environ Microbiol.* **2007**;73(5):1481–1488. doi:10.1128/AEM.01781-06
60. Beecher DJ, Wong A. Identification of hemolysin BL-producing *Bacillus cereus* isolates by a discontinuous hemolytic pattern in blood agar. *Appl Environ Microbiol.* **1994**;60(5):1646–1651. doi:10.1128/aem.60.5.1646-1651.1994
61. Hwang J-Y, Park J-H. Characteristics of enterotoxin distribution, hemolysis, lecithinase, and starch hydrolysis of *Bacillus cereus* isolated from infant formulas and ready-to-eat foods. *J Dairy Sci.* **2015**;98(3):1652–1660. doi:10.3168/jds.2014-9042
62. Prüß BM, Dietrich R, Nibler B, Märtlbauer E, Scherer S. The hemolytic enterotoxin HBL is broadly distributed among species of the *Bacillus cereus* group. *Appl Environ Microbiol.* **1999**;65(12):5436–5442. doi:10.1128/AEM.65.12.5436-5442.1999
63. Pirhonen T, Andersson M, Jääskeläinen EL, Salkinoja-Salonen M, Honkanen-Buzalski T, Johansson T-L. Biochemical and toxic diversity of *Bacillus cereus* in a pasta and meat dish associated with a food-poisoning case. *Food Microbiol.* **2005**;22(1):87–91. doi:10.1016/j.fm.2004.04.002
64. Drobniewski FA. *Bacillus cereus* and related species. *Clin Microbiol Rev.* **1993**;6(4):324–338.
65. Beecher DJ, Olsen TW, Somers EB, Wong AC. Evidence for contribution of tripartite hemolysin BL, phosphatidylcholine-preferring phospholipase C, and collagenase to virulence of *Bacillus cereus* endophthalmitis. *Infect Immun.* **2000**;68(9):5269–5276. doi:10.1128/IAI.68.9.5269-5276.2000
66. Nguyen AT, Tallent SM. Screening food for *Bacillus cereus* toxins using whole genome sequencing. *Food Microbiol.* **2019**;78:164–170. doi:10.1016/j.fm.2018.10.008
67. Savić D, Miljković-Selimović B, Lepšanić Z, et al. Antimicrobial susceptibility and  $\beta$ -lactamase production in *Bacillus cereus* isolates from stool of patients, food and environment samples. *Vojnosanitetski pregled.* **2016**;73(10):904–909. doi:10.2298/VSP150415134S
68. Mousa D, Abd El Tawab A, El Hofy F, Maarouf A. Molecular studies on antibiotic resistant *Bacillus cereus* isolated from meat products and human in Kaliobia, Egypt. *Benha Vet Med J.* **2020**;38(2):125–130. doi:10.21608/bvmj.2020.25802.1187
69. Mathur S, Singh R. Antibiotic resistance in food lactic acid bacteria—a review. *Int J Food Microbiol.* **2005**;105(3):281–295. doi:10.1016/j.ijfoodmicro.2005.03.008
70. Algammal AM, Mabrok M, Ezzat M, et al. Prevalence, antimicrobial resistance (AMR) pattern, virulence determinant and AMR genes of emerging multi-drug resistant *Edwardsiella tarda* in Nile tilapia and African catfish. *Aquaculture.* **2021**;2021:737643.
71. Enany ME, Algammal AM, Shagar GI, Hanora AM, Elfeil WK, Elshaffy NM. Molecular typing and evaluation of Sidr honey inhibitory effect on virulence genes of MRSA strains isolated from catfish in Egypt. *Pak J Pharm Sci.* **2018**;31(5):1865–1870.



72. El-Sayed M, Algammal A, Abouel-Atta M, Mabrok M, Emam A. Pathogenicity, genetic typing, and antibiotic sensitivity of *Vibrio alginolyticus* isolated from *Oreochromis niloticus* and *Tilapia zillii*. *Rev Med Vet.* **2019**;170:80–86.
73. Smith P. The performance of antimicrobial susceptibility testing programmes relevant to aquaculture and aquaculture products. **2019**.
74. Caro-Astorga J, Pérez-García A, de Vicente A, Romero D. A genomic region involved in the formation of adhesin fibers in *Bacillus cereus* biofilms. *Front Microbiol.* **2015**;5:745. doi:10.3389/fmicb.2014.00745
75. Owusu-Kwarteng J, Wuni A, Akabanda F, Tano-Debrah K, Jespersen L. Prevalence, virulence factor genes and antibiotic resistance of *Bacillus cereus* sensu lato isolated from dairy farms and traditional dairy products. *BMC Microbiol.* **2017**;17(1):1–8. doi:10.1186/s12866-017-0975-9
76. Smith D, Berrang M, Feldner P, Phillips R, Meinersmann R. Detection of *Bacillus cereus* on selected retail chicken products. *J Food Prot.* **2004**;67(8):1770–1773. doi:10.4315/0362-028X-67.8.1770
77. Guinebretière M-H, Broussolle V, Nguyen-The C. Enterotoxigenic profiles of food-poisoning and food-borne *Bacillus cereus* strains. *J Clin Microbiol.* **2002**;40(8):3053–3056. doi:10.1128/JCM.40.8.3053-3056.2002
78. Tewari A, Singh S, Singh R. Incidence and enterotoxigenic profile of *Bacillus cereus* in meat and meat products of Uttarakhand, India. *J Food Sci Technol.* **2015**;52(3):1796–1801. doi:10.1007/s13197-013-1162-0
79. Ngamwongsatit P, Buasri W, Pianariyanon P, et al. Broad distribution of enterotoxin genes (hblCDA, nheABC, cytK, and entFM) among *Bacillus thuringiensis* and *Bacillus cereus* as shown by novel primers. *Int J Food Microbiol.* **2008**;121(3):352–356. doi:10.1016/j.ijfoodmicro.2007.11.013
80. Rather M, Aulakh R, Gill J, Ghatak S. Enterotoxin gene profile and antibiogram of *Bacillus cereus* strains isolated from raw meats and meat products. *J Food Saf.* **2012**;32(1):22–28. doi:10.1111/j.1745-4565.2011.00340.x
81. Abdeen E, Hussien H, Hadad GAE, Mousa WS. Prevalence of virulence determinants among *Bacillus cereus* isolated from milk products with potential public health concern. *Pak J Biol Sci.* **2020**;23(3):206–212. doi:10.3923/pjbs.2020.206.212
82. Bhunia AK. *Bacillus cereus* and *Bacillus anthracis*. In: *Foodborne Microbial Pathogens*. Springer; **2018**:193–207.
83. Gilmore MS, Cruz-Rodz AL, Leimeister-Wächter M, Kreft J, Goebel W. A *Bacillus cereus* cytolytic determinant, cereolysin AB, which comprises the phospholipase C and sphingomyelinase genes: nucleotide sequence and genetic linkage. *J Bacteriol.* **1989**;171(2):744–753. doi:10.1128/jb.171.2.744-753.1989
84. Pomerantsev A, Kalnin K, Osorio M, Leppla S. Phosphatidylcholine-specific phospholipase C and sphingomyelinase activities in bacteria of the *Bacillus cereus* group. *Infect Immun.* **2003**;71(11):6591–6606. doi:10.1128/IAI.71.11.6591-6606.2003
85. Bianco A, Capozzi L, Monno MR, et al. Characterization of *Bacillus cereus* group isolates from human bacteremia by whole-genome sequencing. *Front Microbiol.* **2020**;11. doi:10.3389/fmicb.2020.599524
86. Materon IC, Queenan AM, Koehler TM, Bush K, Palzkill T. Biochemical characterization of  $\beta$ -lactamases Bla1 and Bla2 from *Bacillus anthracis*. *Antimicrob Agents Chemother.* **2003**;47(6):2040–2042. doi:10.1128/AAC.47.6.2040-2042.2003
87. Fenselau C, Havey C, Teerakulkittipong N, Swatkoski S, Laine O, Edwards N. Identification of  $\beta$ -lactamase in antibiotic-resistant *Bacillus cereus* spores. *Appl Environ Microbiol.* **2008**;74(3):904–906. doi:10.1128/AEM.00788-07
88. Tahmasebi H, Talebi R, Zarif B. Isolated of *Bacillus cereus* in chicken meat and investigation  $\beta$ -lactamase antibiotic-resistant in *Bacillus cereus* from chicken meat. *Adv Life Sci.* **2014**;4(4):200–206.
89. Sornchuer P, Saninjak K, Prathaphan P, Tiengtip R, Wattanaphansak S. Antimicrobial susceptibility profile and whole-genome analysis of a strong biofilm-forming *Bacillus* Sp. B87 strain isolated from food. *Microorganisms.* **2022**;10(2):252. doi:10.3390/microorganisms10020252
90. Sornchuer P, Tiengtip R. Prevalence, virulence genes, and antimicrobial resistance of *Bacillus cereus* isolated from foodstuffs in Pathum Thani Province, Thailand. *Pharma Sci Asia.* **2021**;48(2):194–203. doi:10.29090/psa.2021.02.19.119
91. Chen Y, Succi J, Tenover FC, Koehler TM.  $\beta$ -lactamase genes of the penicillin-susceptible *Bacillus anthracis* Sterne strain. *J Bacteriol.* **2003**;185(3):823–830. doi:10.1128/JB.185.3.823-830.2003
92. Carruth L, Roess AA, Terefe Y, Hosh FM, Salman M. Antimicrobial resistance and food safety in Africa. *Lancet Infect Dis.* **2017**;17:575–576. doi:10.1016/S1473-3099(17)30273-6
93. Lermniaux NA, Cameron AD. Horizontal transfer of antibiotic resistance genes in clinical environments. *Can J Microbiol.* **2019**;65(1):34–44. doi:10.1139/cjm-2018-0275
94. Özdemir F, Arslan S. Molecular characterization and toxin profiles of *Bacillus* spp. isolated from retail fish and ground beef. *J Food Sci.* **2019**;84(3):548–556. doi:10.1111/1750-3841.14445

## Infection and Drug Resistance

Dovepress

### Publish your work in this journal

Infection and Drug Resistance is an international, peer-reviewed open-access journal that focuses on the optimal treatment of infection (bacterial, fungal and viral) and the development and institution of preventive strategies to minimize the development and spread of resistance. The journal is specifically concerned with the epidemiology of antibiotic resistance and the mechanisms of resistance development and diffusion in both hospitals and the community. The manuscript management system is completely online and includes a very quick and fair peer-review system, which is all easy to use. Visit <http://www.dovepress.com/testimonials.php> to read real quotes from published authors.

Submit your manuscript here: <https://www.dovepress.com/infection-and-drug-resistance-journal>