

A clinical prediction model for hospitalized COPD exacerbations based on “treatable traits”

This article was published in the following Dove Medical Press journal:
International Journal of COPD

Anthony CA Yui¹
CH Loh¹
PY Tiew^{2,3}
Huiying Xu⁴
Aza AM Taha¹
Jansen Koh¹
Jessica Tan⁵
Therese S Lapperre^{6,7}
Antonio Anzueto⁸
Augustine KH Tee¹

¹Department of Respiratory and Critical Care Medicine, Changi General Hospital, Singapore;

²Department of Respiratory and Critical Care Medicine, Singapore General Hospital, Singapore;

³Translational Respiratory Research Laboratory, Lee Kong Chian School of Medicine, Nanyang Technological University, Singapore;

⁴Department of Respiratory and Critical Care Medicine, Tan Tock Seng Hospital, Singapore; ⁵Department of General Medicine, Sengkang General Hospital, Singapore; ⁶Department of Respiratory Medicine, Bispebjerg and Frederiksberg Hospital, Copenhagen, Denmark; ⁷Duke-National University of Singapore Medical School, Singapore; ⁸Division of Pulmonary Diseases and Critical Care Medicine, Department of Medicine, UT Health Science Center, San Antonio, TX, USA

Correspondence: Anthony CA Yui
Department of Respiratory and Critical Care Medicine, Changi General Hospital,
2 Simei St 3, 529889 Singapore
Email anthony.yui.ca@singhealth.com.sg

Background: Assessing risk of future exacerbations is an important component in COPD management. History of exacerbation is a strong and independent predictor of future exacerbations, and the criterion of ≥ 2 nonhospitalized or ≥ 1 hospitalized exacerbation is often used to identify high-risk patients in whom therapy should be intensified. However, other factors or “treatable traits” also contribute to risk of exacerbation.

Objective: The objective of the study was to develop and externally validate a novel clinical prediction model for risk of hospitalized COPD exacerbations based on both exacerbation history and treatable traits.

Patients and methods: A total of 237 patients from the COPD Registry of Changi General Hospital, Singapore, aged 75 ± 9 years and with mean post-bronchodilator FEV_1 $60\% \pm 20\%$ predicted, formed the derivation cohort. Hospitalized exacerbation rate was modeled using zero-inflated negative binomial regression. Calibration was assessed by graphically comparing the agreement between predicted and observed annual hospitalized exacerbation rates. Predictive (discriminative) accuracy of the model for identifying high-risk patients (defined as experiencing ≥ 1 hospitalized exacerbations) was assessed with area under the curve (AUC) and receiver operating characteristics analyses, and compared to other existing risk indices. We externally validated the prediction model using a multicenter dataset comprising 419 COPD patients.

Results: The final model included hospitalized exacerbation rate in the previous year, history of acute invasive/noninvasive ventilation, coronary artery disease, bronchiectasis, and sputum nontuberculous mycobacteria isolation. There was excellent agreement between predicted and observed annual hospitalized exacerbation rates. AUC was 0.789 indicating good discriminative accuracy, and was significantly higher than the AUC of the Global Initiative for Chronic Obstructive Lung Disease (GOLD) risk assessment criterion (history of ≥ 1 hospitalized exacerbation in the previous year) and the age, dyspnea, and obstruction index. When applied to the independent multicenter validation cohort, the model was well-calibrated and discrimination was good.

Conclusion: We have derived and externally validated a novel risk prediction model for COPD hospitalizations which outperforms several other risk indices. Our model incorporates several treatable traits which can be targeted for intervention to reduce risk of future hospitalized exacerbations.

Keywords: exacerbations, clinical prediction model, risk assessment

Introduction

COPD exacerbations are associated with high healthcare costs,¹ reduced quality of life,^{2,3} accelerated lung function decline,⁴ and excess mortality.⁵ Hence, assessing future risk of exacerbation is an important component in current COPD management.⁶ History of exacerbation in the previous year, either ≥ 2 nonhospitalized or ≥ 1 leading to hospital admission, is often used to identify high-risk patients in whom bronchodilator or inhaled steroid therapy should be intensified.⁶ This approach is based on history

of exacerbation being a strong and consistent predictor of future exacerbations,⁷ and is simple to use in clinical practice.

There are several limitations of using history of exacerbation alone to assess risk. First, exacerbations are heterogeneous⁸ and multiple risk factors besides history of exacerbation may predispose to subsequent exacerbation such as comorbidities, inflammatory phenotype, infection, smoking, low body mass index (BMI), and lung function.⁹ Whether inclusion of other factors (also known as “treatable traits”)¹⁰ can improve the predictive accuracy for future exacerbations is unknown. Second, a significant subset of COPD patients may exacerbate without a history of exacerbation in the past year.¹¹ In such patients, exacerbation risk is not accurately predicted by history of exacerbation. Preemptive risk assessment – using variables which are independent of the occurrence of the first exacerbation – may trigger interventions to mitigate occurrence of the first exacerbation and its associated adverse sequelae which may be irreversible such as accelerated lung function decline and mortality.^{4,5} Third, using ≥ 1 hospitalized or ≥ 2 nonhospitalized exacerbations in the past year to stratify risk is problematic because the optimal threshold for dichotomizing risk is not known,^{7,11,12} and probably varies depending on the patient and health system factors. More importantly, annual exacerbation rate occurs as a gradient with a range of possible values, and dichotomizing risk based on a predetermined cut-point ignores risk differences falling outside the cut-point that might still be clinically relevant. For example, a patient who has had five exacerbations in the past year clearly has worse prognosis and needs to be managed differently compared to an individual who has had two, but both would be classified as high-risk if using a threshold of ≥ 2 exacerbations.

Here, our aim was to derive a model for predicting risk of hospitalized COPD exacerbations which uses multiple clinically-relevant parameters and is capable of stratifying patients along a gradient of risk. We compared the predictive accuracy of the model to the GOLD risk assessment criterion (history of ≥ 1 exacerbation leading to hospitalization in the previous year) and two other existing multicomponent risk indices. Finally, we validated the model in a multicenter patient cohort with distinct clinical features compared to the derivation group.

Patients and methods

Participants

We used data from the Changi General Hospital, Singapore COPD Registry for this study. The registry recruited consecutive patients aged ≥ 40 years, who attended the specialist

COPD clinic at Changi General Hospital between January 1, 2008 and January 31, 2018. Diagnosis of COPD was based on persistent respiratory symptoms (cough, dyspnea, and sputum production) and supported by post-bronchodilator FEV₁/FVC of < 0.7 .⁶ We also included patients formerly classified as “GOLD 0”, who demonstrated persistent respiratory symptoms with emphysema or airway thickening on chest computed tomography, but absent airflow obstruction on spirometry.¹³ This group of patients who do not meet standard criteria for airway obstruction are often excluded from clinical studies, despite having occult airway disease, high rate of exacerbation-like events, activity limitation, and frequent use of respiratory medications when compared to COPD patients diagnosed according to spirometric criteria.¹³ The derivation cohort consisted of patients with complete data on all candidate variables analyzed in the model derivation phase. The multicenter validation cohort was formed by pooling patients from three sources: 1) the remaining patients from the Changi General Hospital COPD Registry who had incomplete data for model derivation but sufficient data on variables in the final model, 2) patients from the Singapore General Hospital COPD clinic recruited between 1 March 2014 and 6 October 2018 with sufficient data on variables in the final model, and 3) the first 50 consecutive patients who presented to Tan Tock Seng Hospital, Singapore with a diagnosis of COPD in 2016. The datasets used in this analysis were deidentified and anonymized in accordance with personal data protection regulations. In addition, waiver of informed consent was granted by the Singhealth Centralized Institutional Review Board (Changi General Hospital and Singapore General Hospital) and National Healthcare Group Domain Specific Review Board (Tan Tock Seng Hospital). Informed consent was waived based on ethical consideration and on the following grounds: the research was purely observational and did not interfere with patients’ usual care, the research could not reasonably be carried out without the use of health information, use of data involved no more than minimal risk to the research subject, and the waiver would not otherwise adversely affect the rights and welfare of subjects. This study complies with the Declaration of Helsinki.

Variables

We extracted the following variables from electronic discharge summaries and outpatient consult records: demographics, anthropomorphic data, COPD Assessment Test (CAT) or Modified Medical Research Council dyspnea scale (mMRC), smoking and comorbidities (coronary artery disease, atrial fibrillation, heart failure, hypertension, stroke,

peripheral vascular disease, pulmonary hypertension, depression, anxiety, gastroesophageal reflux, peptic ulcer disease, gastritis, cancer, diabetes, dyslipidemia, sinonasal disease, asthma, obstructive sleep apnea, osteoporosis, chronic kidney disease, pulmonary tuberculosis [TB], and bronchiectasis). Comorbidities were obtained based on electronic medical record of International Classification of Diseases codes. Diagnosis of bronchiectasis was further confirmed by high-resolution computed tomography of the thorax. Spirometry was performed according to American Thoracic Society/European Respiratory Society guidelines,¹⁴ with predicted values obtained from Morris et al¹⁵ and adjusted by a factor of 0.94 as recommended for Asian patients.¹⁶ Bronchodilator reversibility was assessed 10–15 minutes after administration of 400 µg of inhaled salbutamol via a spacer.¹⁴ Results of any previous sputum gram-stain, aerobic culture, Ziehl–Neelsen stain for acid-fast bacilli and mycobacterial cultures were also recorded.

Hospitalized COPD exacerbation was defined according to consensus definition¹⁷ as primary or secondary discharge diagnosis of acute COPD exacerbation. All subjects had data on number of hospitalized exacerbations in each of the two consecutive years. The primary outcome was number of hospitalized exacerbations in the second year.

Model derivation, assessment of predictive accuracy, and external validation

We modeled the primary outcome using zero-inflated negative binomial (ZINB) regression, which is suitable for over-dispersed count outcome variables with excessive zeros. To derive the prediction model, we used a univariate-based method.¹⁸ Univariate ZINB regression was first performed on each candidate variable to identify factors associated with increased risk of hospitalized exacerbation. Significant variables arising from the univariate analysis were then used in multivariate ZINB regression to identify variables independently associated with increased risk of hospitalized exacerbation. Finally, we discarded variables which lost significance in the multivariate model to form the final model.

To assess model calibration, we graphed the probability of observed vs predicted annual hospitalized exacerbations rate. Receiver operating characteristics (ROC) and area under the curve (AUC) analyses were used to evaluate discriminative predictive accuracy for the identifying high-risk patients, defined as experiencing ≥ 1 hospitalized exacerbation. We compared AUCs between our model with three other risk assessment methods: the GOLD risk assessment criterion (history of ≥ 1 exacerbation leading to hospitalization in

the previous year); the age, dyspnea, and obstruction (ADO) index;¹⁹ and the dyspnea, obstruction, smoking, and exacerbation (DOSE) index.²⁰

To evaluate model generalizability, we assessed calibration and discrimination in the validation cohort.

The entire dataset was used in order to maximize statistical power and the present analysis fulfilled rule-of-thumb criterion of ratio of ≥ 10 outcome events (ie, hospitalized exacerbations) to the number of predictors used in the final model.

Statistics

Student's *t*-test, chi-squared test, or Mann–Whitney *U* test was used to compare parametric, categorical, or nonparametric data, respectively. Statistics calculations were performed on Stata 13 (StataCorp LP, College Station, TX, USA).

Results

A total of 237 patients from the Changi General Hospital COPD Registry had complete data for model derivation, and the remaining 169 were pooled with 200 patients from the Singapore General Hospital and 50 patients from Tan Tock Seng Hospital to form the independent validation cohort (N=419). Characteristics and differences between the derivation and validation cohorts are shown in Table 1. Compared to the validation cohort, patients in the derivation cohort were significantly older and had lower BMI. In addition, the derivation cohort had lower use of short-acting bronchodilators only and higher use of triple therapy. Patients in the derivation cohort were also more likely to have a history of acute invasive/noninvasive ventilation, pulmonary hypertension, cancer, asthma, and osteoporosis than patients in the validation cohort, but prevalence of gastroesophageal reflux was lower than in the validation cohort. The derivation cohort demonstrated higher rates of long-term macrolide therapy compared to the validation cohort. Average prospective hospitalized exacerbation rates (primary outcome) were 1.41 and 1.04 per patient-year in the derivation and validation cohorts, respectively, (Mann–Whitney *U* test, $P=0.03$).

Univariate ZINB regression using data from the derivation cohort (Table 2) found that the following nontreatment variables were associated with increased risk of hospitalized exacerbation: number of hospitalized exacerbations in the previous year, previous invasive/noninvasive ventilation, lower post-bronchodilator FEV₁, CAT ≥ 10 or mMRC ≥ 2 , coronary artery disease, anxiety, bronchiectasis, history of TB, and sputum nontuberculous mycobacteria (NTM) isolation. The final multivariate model,

Table 1 Patient characteristics

Variable	Derivation cohort	Validation cohort	P-value (derivation vs validation cohort)
N	237	419	
Age, years	75±9	72±9	<0.001
Male	222 (93.7%)	386 (92.1%)	NS
Ethnicity			NS
Chinese	176 (74.3%)	324 (77.3%)	
Malay	34 (14.3%)	53 (12.6%)	
Indian	13 (5.5%)	28 (6.7%)	
Caucasian	4 (1.7%)	10 (2.4%)	
Others	10 (4.2%)	4 (1.0%)	
BMI	20.9±5.0	21.7±4.8	0.04
Missing data	0	44	
Smoking status			NS
Never smoker	0 (0.0%)	6 (1.4%)	
Current smoker	87 (36.7%)	175 (42.0%)	
Ex-smoker	150 (63.3%)	236 (56.6%)	
Missing	0	2	
Hospitalizations for exacerbation in previous year	0 (0–1)	0 (0–1)	NS
0	131 (55.3%)	248 (59.2%)	
1	54 (22.8%)	84 (20.0%)	
≥2	52 (21.9%)	87 (20.8%)	
Post-bronchodilator FEV ₁ % predicted	60±20	57±20	NS
Missing data	0	28	
≥80	41 (17.3%)	53 (13.6%)	
50–79	111 (46.8%)	188 (48.1%)	
30–49	75 (31.6%)	129 (33.0%)	
<30	10 (4.2%)	21 (5.4%)	
Dyspnea			NS
mMRC ≥2 or CAT ≥10	209 (88.2%)	192 (82.4%)	
mMRC <2 and CAT <10	28 (11.8%)	41 (17.6%)	
Missing data	0	186	
Previous acute invasive/noninvasive ventilation	89 (37.6%)	81 (19.3%)	<0.001
Comorbidities			
Coronary artery disease	69 (29.1%)	108 (25.8%)	NS
Atrial fibrillation	28 (11.9%)	37 (8.9%)	NS
Heart failure	14 (5.9%)	32 (7.6%)	NS
Hypertension	112 (47.3%)	191 (45.6%)	NS
Stroke	22 (9.3%)	40 (9.5%)	NS
Peripheral vascular disease	12 (5.1%)	12 (2.9%)	NS
Pulmonary hypertension	27 (11.4%)	24 (5.7%)	0.009
Depression	8 (3.4%)	18 (4.3%)	NS
Anxiety	4 (1.7%)	10 (2.4%)	NS
Gastroesophageal reflux disease	14 (5.9%)	39 (9.3%)	0.047
Peptic ulcer disease	10 (4.2%)	18 (4.3%)	NS
Gastritis	21 (8.9%)	25 (6.0%)	NS
Cancer	40 (16.9%)	37 (8.9%)	0.002
Diabetes	50 (21.1%)	72 (17.2%)	NS
Dyslipidemia	101 (42.6%)	173 (41.3%)	NS
Sinonasal disease	2 (0.8%)	13 (3.1%)	NS
Asthma	39 (16.5%)	43 (10.3%)	0.021
Obstructive sleep apnea	6 (2.5%)	7 (1.7%)	NS
Osteoporosis	22 (9.3%)	14 (3.3%)	0.001
Chronic kidney disease	17 (7.2%)	26 (6.2%)	NS
History of pulmonary TB	47 (19.8%)	73 (19.8%)	NS
Bronchiectasis	22 (9.3%)	36 (8.6%)	NS
Sputum NTM isolation	14 (5.9%)	18 (4.3%)	NS
Inhaler therapy			0.015
Short acting bronchodilators only	15 (6.3%)	58 (13.8%)	
LABA or LAMA monotherapy	44 (18.6%)	71 (16.9%)	
Dual long-acting bronchodilators or ICS/LABA	67 (28.3%)	127 (30.3%)	
Triple therapy	111 (46.8%)	163 (38.9%)	
Macrolides	19 (8.0%)	6 (1.4%)	<0.001

Notes: Data are shown as mean ± SD, median (interquartile range), or number (%). P-values are calculated by Student's t-test, Mann–Whitney U test, or chi-squared test as appropriate.

Abbreviations: BMI, body mass index; CAT, COPD Assessment Test; ICS, inhaled corticosteroids; LABA, long-acting beta agonist; LAMA, long-acting muscarinic antagonist; mMRC, Modified Medical Research Council dyspnea scale; NA, not applicable; NS, not significant at P=0.05 significance level; NTM, nontuberculous mycobacteria; TB, tuberculosis.

Table 2 Univariate ZINB regression for the primary outcome of number of hospitalized exacerbations/year

Variable	Incidence rate ratio	95% CI	P-value
Age	0.986	0.965–1.001	NS
Female gender	0.504	0.200–1.269	NS
BMI	0.989	0.953–1.027	NS
Current smoker	1.929	0.609–1.418	NS
Previous acute invasive or noninvasive ventilation	2.064	1.385–3.078	<0.001
Number of exacerbations requiring hospitalization in the previous year	1.616	1.440–1.814	<0.001
mMRC ≥ 2 or CAT ≥ 10	2.662	1.293–5.482	0.008
Post-bronchodilator FEV ₁ % predicted	0.986	0.975–0.996	0.009
Comorbidities			
Coronary artery disease	1.591	1.033–2.449	0.035
Atrial fibrillation	0.900	0.475–1.705	NS
Heart failure	1.456	0.636–3.332	NS
Hypertension	1.228	0.819–1.842	NS
Stroke	0.756	0.367–1.560	NS
Peripheral vascular disease	1.258	0.511–3.097	NS
Pulmonary hypertension	1.567	0.852–2.880	NS
Depression	2.316	0.830–6.455	NS
Anxiety	4.713	1.219–18.222	0.025
Gastroesophageal reflux	0.961	0.404–2.283	NS
Peptic ulcer disease	0.993	0.362–2.728	NS
Gastritis	1.854	0.952–3.610	NS
Cancer	0.708	0.405–1.240	NS
Diabetes	1.465	0.906–2.369	NS
Dyslipidemia	1.315	0.876–1.974	NS
Sinonasal disease	1.424	0.170–11.932	NS
Asthma	1.045	0.606–1.802	NS
Obstructive sleep apnea	0.945	0.257–3.475	NS
Osteoporosis	0.757	0.367–1.560	NS
Chronic kidney disease	1.047	0.478–2.290	NS
History of pulmonary TB	1.828	1.132–2.952	0.014
Bronchiectasis	2.638	1.416–4.915	<0.002
Sputum NTM isolation	3.140	1.481–6.657	0.003

Abbreviations: BMI, body mass index; CAT, COPD Assessment Test; mMRC, Modified Medical Research Council dyspnea scale; NS, not significant; NTM, nontuberculous mycobacteria; TB, tuberculosis; ZINB, zero-inflated negative binomial.

shown in Table 3, found that number of hospitalizations in previous year, previous invasive/noninvasive ventilation, coronary artery disease, bronchiectasis, and sputum NTM isolation were independently associated with increased risk of hospitalized exacerbation.

Observed and predicted annual hospitalized exacerbation rates for the final multivariate model were in good agreement, as depicted in Figure 1A. ROC curves of our model vs GOLD risk assessment criterion for identifying high-risk patients are shown in Figure 2A. Predictive accuracy of our model

was significantly greater than using the GOLD risk assessment criterion (AUC: 0.789 [95% CI: 0.732–0.846] vs AUC: 0.690 [95% CI: 0.631–0.748], $P=0.001$). A subset of the derivation cohort, $n=222$, had complete data for calculating ADO and DOSE risk scores (Figure 3). Predictive accuracy of our model was higher than that for the ADO index (AUC: 0.789 [95% CI: 0.731–0.848] vs AUC: 0.656 [95% CI: 0.586–0.727], $P=0.002$). AUC of the DOSE index was 0.717 (95% CI: 0.652–0.782), which was lower than the AUC of our model at borderline significance, $P=0.05$.

Table 3 Final multivariate ZINB regression model for the primary outcome of number of hospitalized exacerbations/year

Variable	Incidence rate ratio	95% CI	P-value
Previous acute invasive or noninvasive ventilation	1.60	1.15–2.22	0.005
Number of exacerbations requiring hospitalization in the previous year	1.52	1.38–1.68	<0.001
Coronary artery disease	1.90	1.36–2.66	<0.001
Bronchiectasis	1.93	1.20–3.01	0.006
Sputum NTM isolation	2.04	1.19–3.48	0.009

Abbreviations: NTM, nontuberculous mycobacteria; ZINB, zero-inflated negative binomial.

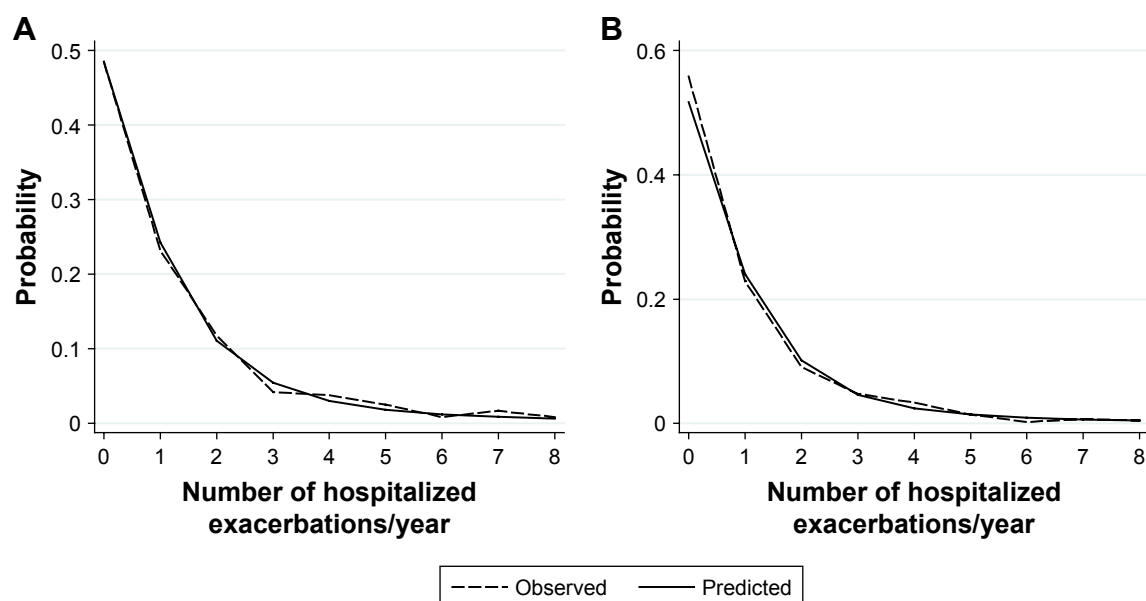


Figure 1 Observed and predicted values for the primary outcome of annual hospitalized exacerbation rate for (A) the derivation cohort and (B) the multicenter independent validation cohort. Data are shown for hospitalized exacerbation rate of up to eight per year.

Applying our multivariate model to the validation cohort, we again found good agreement between observed and predicted annual hospitalized exacerbation rates (Figure 1B). In addition, predictive accuracy for high-risk patients remained good and was significantly superior to the GOLD risk assessment criterion in the validation cohort (Figure 2B, AUC: 0.728 [95% CI: 0.680–0.777] vs AUC: 0.671 [95% CI: 0.627–0.717], $P=0.01$).

Discussion

In this study, our aim was to develop and externally validate a novel clinical prediction model for risk of hospitalized COPD exacerbations based on both exacerbation history and treatable traits. We identified several factors independently associated with increased prospective risk of hospitalized COPD exacerbation: number of hospitalized exacerbations in the previous year, previous invasive/noninvasive ventilation,

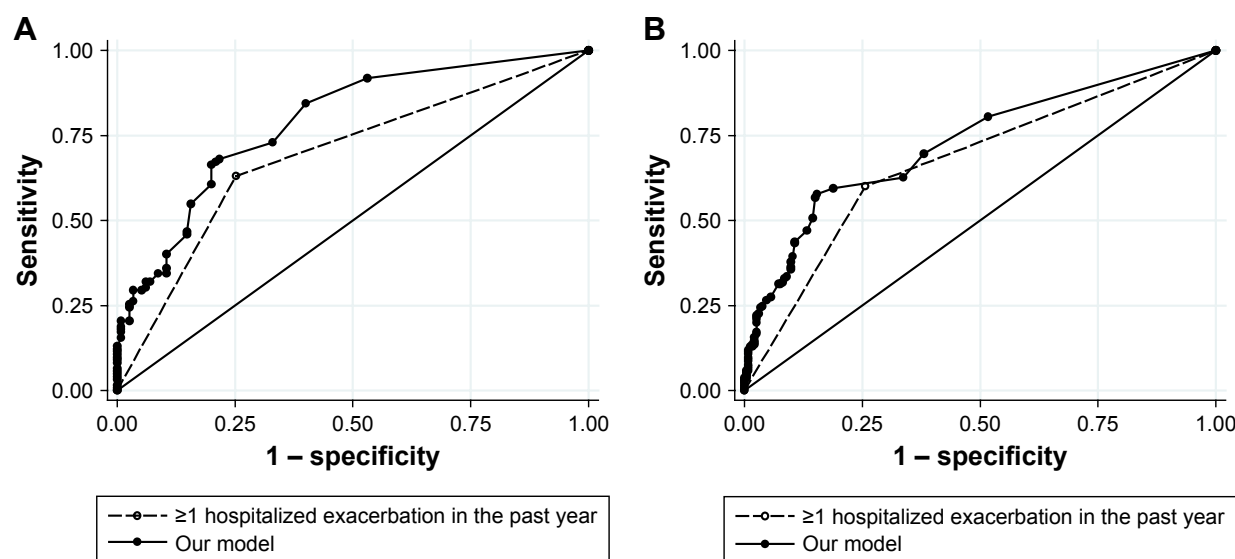


Figure 2 ROC curves of our model (solid line and closed circles) and GOLD risk assessment criterion (history of ≥ 1 exacerbation leading to hospitalization in the previous year, dashed line and open circles) for identifying high-risk patients in (A) the derivation cohort and (B) the independent multicenter validation cohort.

Abbreviations: GOLD, Global Initiative for Chronic Obstructive Lung Disease; ROC, receiver operating characteristics.

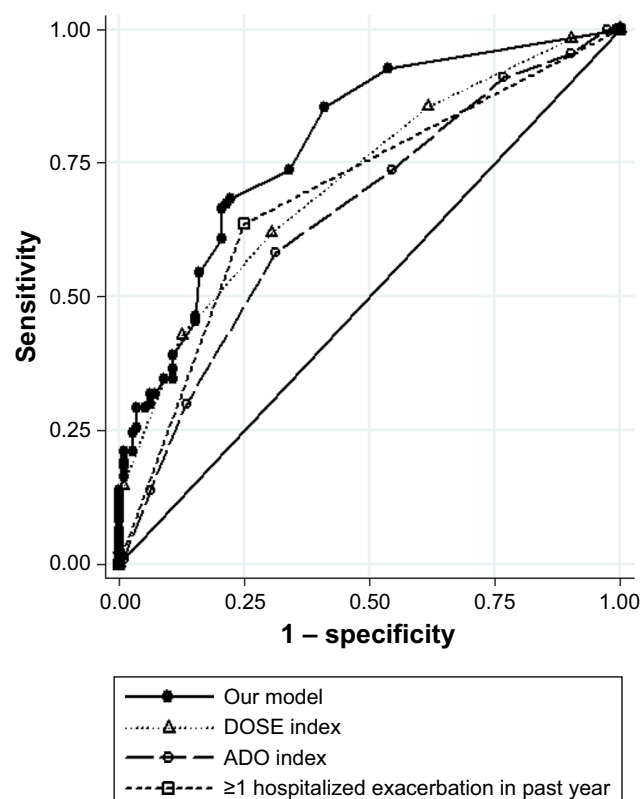


Figure 3 ROC curves of our model, DOSE index, ADO index, and GOLD risk assessment criterion (history of ≥ 1 exacerbation leading to hospitalization in the previous year) for identifying high-risk patients.

Abbreviations: ADO, age, dyspnea, and obstruction; DOSE, dyspnea, obstruction, smoking, and exacerbation; GOLD, Global Initiative for Chronic Obstructive Lung Disease; ROC, receiver operating characteristics.

bronchiectasis, sputum NTM isolation, and coronary artery disease. A risk prediction model comprising these multiple variables demonstrated good predictive accuracy and significantly outperformed the GOLD risk assessment criterion (history of ≥ 1 exacerbation leading to hospitalization in the previous year) and the ADO index for identifying patients at high-risk of hospitalized exacerbation. Predictive accuracy of our model was also superior to the DOSE index, but statistical significance was borderline ($P=0.05$). In addition, our model was capable of predicting number of hospitalized exacerbations over a range of possible values, and stratified patients along a gradient of risk instead of two broad risk categories. We validated the risk prediction model in a multicenter cohort of COPD patients with distinct clinical characteristics and found that predictive accuracy remained good.

History of exacerbation is the strongest predictor of future exacerbations and, therefore, forms the basis for assessing future risk in the GOLD strategy. There are several multidimensional prognostic indices available for use in COPD patients, including for the prediction of exacerbations,²¹ but to

our knowledge, no study has demonstrated that inclusion of other variables besides history of exacerbation leads to better risk prediction. Motegi et al²² prospectively evaluated the discriminative accuracies of the ADO, DOSE, and Body mass index, airflow Obstruction, Dyspnea, and Exercise (BODE) indices for predicting exacerbations ascertained from symptom diaries. AUC values obtained for ADO and DOSE were similar to those found in the present study despite methodological differences, but in that study, none of the indices was significantly better than history of exacerbation alone for predicting future exacerbations. ADO and DOSE were evaluated in another study by Jones et al using international multicenter datasets and found to be weak predictors of hospitalized and nonhospitalized exacerbations.²³ In contrast, our model demonstrated better discriminative accuracy for predicting hospitalized exacerbations than both ADO and the GOLD criterion, and a trend toward superior predictive accuracy compared to DOSE. Inclusion of comorbidities and infection, important dimensions known to affect exacerbation risk, is unique to our model and not used by other existing risk indices.

History of exacerbation,^{7,11,24,25} requirement for invasive/noninvasive ventilation,²⁶ bronchiectasis,^{27,28} and sputum NTM^{29,30} have all been described as independent associations of severe exacerbations. In addition, some of the significant univariate associations such as anxiety,³¹ dyspnea ratings,^{11,24,32,33} and lower FEV₁^{7,32} have been reported in other studies to predict exacerbations, although in the present study they became nonsignificant in the final, fully-adjusted model. Only a few studies have investigated whether coronary artery disease is a risk factor for frequent exacerbations, and their results were conflicting. At least two studies did not find increased rate of exacerbations,^{34,35} although one study reported longer duration of exacerbation.³⁵ Notably, studies on risk factors associated with exacerbations have variable findings. This likely reflects differences in the patient population and risk factors studied, healthcare systems as well as definitions of exacerbation. An important source of variability is the inherent heterogeneity of exacerbation events, which may represent myriad clinicopathologic subtypes and mechanisms,⁸ each with different risk factors.

In addition to ADO, DOSE, and the GOLD criterion, there are several other risk prediction models for COPD hospitalizations or readmissions, including SCOPEX³⁶ and PEARL.³⁷ Which prediction model to use depends not only on predictive accuracy but also on ease of use and practicability, such as whether the predictor variables are available or routinely collected in clinical practice, and this will vary

depending on clinician or hospital practice patterns. Importantly, some of the variables in our full prediction model represent potential modifiable targets or “treatable traits”¹⁰ for reducing hospitalized exacerbation risk. For example, domiciliary noninvasive ventilation has been demonstrated to prolong time to readmission in COPD patients with persistent hypercapnia after exacerbation associated with acute hypercapnic respiratory failure.³⁸ The presence of comorbid bronchiectasis may focus the attention of the clinician on treating both COPD and bronchiectasis, the latter mainly aimed at airway secretion clearance and treating acute or chronic airway infections.³⁹ There is insufficient evidence to guide the management of patients with COPD-bronchiectasis overlap. However, COPD-bronchiectasis overlap may influence the selection of therapies, including avoidance of inhaled corticosteroids, or use of long-term macrolides which have efficacy in reducing exacerbations in both COPD⁴⁰ and bronchiectasis.⁴¹ Similarly, NTM lung disease represents a treatable pulmonary infection, although treatment of NTM in the context of COPD has not been studied. The armamentarium of interventions for coronary artery disease is wide and includes coronary revascularization, antiplatelet therapy, beta-blockers, statins, and angiotensin-converting enzyme inhibitors. Evidence from observational studies indicate that beta-blockers may have a beneficial effect on reducing COPD exacerbations in patients with coronary artery disease.^{42–44}

The strengths of our study are: use of a real-world nonclinical trial COPD patient population with significant comorbidities and overlap with other respiratory diseases, and external validation in a multicenter cohort with several significantly different characteristics compared to the derivation cohort. In addition, bronchiectasis was diagnosed by computed tomography, which is the gold standard. There are several important limitations. First, although the prediction model was validated in other hospitals, the wider generalizability of the prediction model remains unassessed. The study was conducted in Singapore and applicability in other countries may be limited due to different underlying disease processes and prevalence of comorbidities. Thus, the risk prediction model needs to be prospectively evaluated and further validated in other countries and healthcare settings. Second, the model does not include biomarkers such as blood eosinophils and fibrinogen which are known to predict exacerbations and hospitalizations,⁴⁵ and should be a focus of future research. Third, clinical utility and impact of the model has not been evaluated. For example, estimating a patient’s risk using our prediction model would require a risk calculator, and some of the variables in the model may

not be available in primary care, eg, computed tomography diagnosis of bronchiectasis or sputum cultures, thereby limiting usefulness of the risk prediction model in the primary care setting. Whether the risk prediction model will result in meaningful improvements in patient outcomes, care processes, or cost has not been evaluated. Fourth, we focused exclusively on severe exacerbations requiring hospitalization and did not have data on mild or moderate exacerbations not leading to hospitalization, which may impact on effect size of the incident rate ratios obtained here.⁴⁶ Nevertheless, ascertainment from primary hospital discharge diagnosis of COPD exacerbation is objective and widely accepted,¹⁷ and could be reliably assessed using our electronic medical records-based methodology.

Conclusion

To conclude, we have derived and validated a novel risk prediction model based on history of exacerbation and other “treatable traits” which are known to contribute to exacerbation risk. Our model outperforms several other existing risk indices and is capable of stratifying patients along a gradient of risk. Future studies should aim to assess whether using this prediction model to target treatable traits has any clinical utility in preventing COPD exacerbations. Further impact analysis is also needed to investigate if implementation of our risk prediction model is better than usual care for the patient, care processes or cost outcomes.

Acknowledgments

The authors would like to thank Mr Gerald Sim and Changi General Hospital Clinical Trials Research Unit for their assistance in conducting this study. The abstract of this paper was presented at Asian Pacific Society of Respiriology 2018 Congress as a poster presentation with interim findings. The poster’s abstract was published in “Poster Abstracts” in *Respirology*: <https://onlinelibrary.wiley.com/doi/full/10.1111/resp.13420> 131.

Disclosure

AA received grants and/or personal fees from GlaxoSmith-Kline, AstraZeneca, Novartis, and Boehringer Ingelheim. PYT is supported by Singapore Ministry of Health National Medical Research Council under its Research Training Fellowship (NMRC/Fellowship/0049/2017). The other authors report no conflicts of interest in this work.

References

1. Dalal A, Christensen L, Liu F, Riedel AA. Direct costs of chronic obstructive pulmonary disease among managed care patients. *Int J Chron Obstruct Pulmon Dis*. 2010;5:341–349.

2. Seemungal TA, Donaldson GC, Paul EA, Bestall JC, Jeffries DJ, Wedzicha JA. Effect of exacerbation on quality of life in patients with chronic obstructive pulmonary disease. *Am J Respir Crit Care Med*. 1998; 157(5 Pt 1):1418–1422.
3. Miravittles M, Ferrer M, Pont A, et al. Effect of exacerbations on quality of life in patients with chronic obstructive pulmonary disease: a 2 year follow up study. *Thorax*. 2004;59(5):387–395.
4. Dransfield MT, Kunisaki KM, Strand MJ, et al. Acute exacerbations and lung function loss in smokers with and without chronic obstructive pulmonary disease. *Am J Respir Crit Care Med*. 2017;195(3):330.
5. Suissa S, dell'aniello S, Ernst P. Long-term natural history of chronic obstructive pulmonary disease: severe exacerbations and mortality. *Thorax*. 2012;67(11):957–963.
6. Global Initiative for Chronic Obstructive Lung Disease (GOLD). GOLD 2018 global strategy for the diagnosis, management, and prevention of chronic obstructive lung disease 2018 report. 2018.
7. Hurst JR, Vestbo J, Anzueto A, et al. Susceptibility to exacerbation in chronic obstructive pulmonary disease. *N Engl J Med*. 2010;363(12): 1128–1138.
8. Bafadhel M, McKenna S, Terry S, et al. Acute exacerbations of chronic obstructive pulmonary disease: identification of biologic clusters and their biomarkers. *Am J Respir Crit Care Med*. 2011;184(6):662–671.
9. Viniol C, Vogelmeier CF. Exacerbations of COPD. *Eur Respir Rev*. 2018;27(147):170103.
10. Agustí A, Bel E, Thomas M, et al. Treatable traits: toward precision medicine of chronic airway diseases. *Eur Respir J*. 2016;47(2): 410–419.
11. Han MK, Quibrera PM, Carretta EE, et al. Frequency of exacerbations in patients with chronic obstructive pulmonary disease: an analysis of the SPIROMICS cohort. *Lancet Respir Med*. 2017;5(8):619–626.
12. Le Rouzic O, Roche N, Cortot AB, et al. Defining the “Frequent Exacerbator” phenotype in COPD: a hypothesis-free approach. *Chest*. 2018; 153(5):1106–1115.
13. Woodruff PG, Barr RG, Bleecker E, et al. Clinical significance of symptoms in smokers with preserved pulmonary function. *N Engl J Med*. 2016;374(19):1811–1821.
14. Miller MR, Hankinson J, Brusasco V, et al. Standardisation of spirometry. *Eur Respir J*. 2005;26(2):319–338.
15. Morris JF, Koski A, Johnson LC. Spirometric standards for healthy nonsmoking adults. *Am Rev Respir Dis*. 1971;103(1):57–67.
16. Pellegrino R, Viegi G, Brusasco V, et al. Interpretative strategies for lung function tests. *Eur Respir J*. 2005;26(5):948–968.
17. Burge S, Wedzicha JA. COPD exacerbations: definitions and classifications. *Eur Respir J Suppl*. 2003;41:46s–53s.
18. Adams ST, Leveson SH. Clinical prediction rules. *BMJ*. 2012;344:d8312.
19. Puhon MA, Garcia-Aymerich J, Frey M, et al. Expansion of the prognostic assessment of patients with chronic obstructive pulmonary disease: the updated bode index and the ado index. *The Lancet*. 2009; 374(9691):704–711.
20. Jones RC, Donaldson GC, Chavannes NH, et al. Derivation and validation of a composite index of severity in chronic obstructive pulmonary disease: the dose index. *Am J Respir Crit Care Med*. 2009;180(12): 1189–1195.
21. Dijk WD, Bemt L, Haak-Rongen S, et al. Multidimensional prognostic indices for use in COPD patient care. A systematic review. *Respir Res*. 2011;12(1):151.
22. Motegi T, Jones RC, Ishii T, et al. A comparison of three multidimensional indices of COPD severity as predictors of future exacerbations. *Int J Chron Obstruct Pulmon Dis*. 2013;8:259–271.
23. Jones RC, Price D, Chavannes NH, et al. Multi-component assessment of chronic obstructive pulmonary disease: an evaluation of the ado and dose indices and the global obstructive lung disease categories in international Primary care data sets. *NPJ Prim Care Respir Med*. 2016; 26(1):16010.
24. Montserrat-Capdevila J, Godoy P, Marsal JR, Barbé F, Galván L. Risk factors for exacerbation in chronic obstructive pulmonary disease: a prospective study. *Int J Tuberc Lung Dis*. 2016;20(3):389–395.
25. Müllerova H, Maselli DJ, Locantore N, et al. Hospitalized exacerbations of COPD. *Chest*. 2015;147(4):999–1007.
26. Chu CM, Chan VL, Lin AW, Wong IW, Leung WS, Lai CK. Readmission rates and life threatening events in COPD survivors treated with non-invasive ventilation for acute hypercapnic respiratory failure. *Thorax*. 2004;59(12):1020–1025.
27. Minov J, Stoleski S, Mijakoski D, Vasilevska K, Atanasovska A. Exacerbations in COPD patients with bronchiectasis. *Medical Sciences*. 2017;5(2):7.
28. Ni Y, Shi G, Yu Y, Hao J, Chen T, Song H. Clinical characteristics of patients with chronic obstructive pulmonary disease with comorbid bronchiectasis: a systemic review and meta-analysis. *Int J Chron Obstruct Pulmon Dis*. 2015;10:1465–1475.
29. Diel R, Jacob J, Lampenius N, et al. Burden of non-tuberculous mycobacterial pulmonary disease in Germany. *Eur Respir J*. 2017;49(4): 1602109.
30. Huang CT, Tsai YJ, Wu HD, et al. Impact of non-tuberculous mycobacteria on pulmonary function decline in chronic obstructive pulmonary disease. *Int J Tuberc Lung Dis*. 2012;16(4):539–545.
31. Pooler A, Beech R. Examining the relationship between anxiety and depression and exacerbations of COPD which result in hospital admission: a systematic review. *Int J Chron Obstruct Pulmon Dis*. 2014;9: 315–330.
32. Mcgarvey L, Lee AJ, Roberts J, Gruffydd-Jones K, McKnight E, Haughey J. Characterisation of the frequent exacerbator phenotype in COPD patients in a large UK primary care population. *Respir Med*. 2015;109(2):228–237.
33. Wan ES, Demeo DL, Hersh CP, et al. Clinical predictors of frequent exacerbations in subjects with severe chronic obstructive pulmonary disease (COPD). *Respir Med*. 2011;105(4):588–594.
34. Jones PW, Müllerova H, Agustí A, et al. Cardiovascular disease does not predict exacerbation rate or mortality in chronic obstructive pulmonary disease. *Am J Respir Crit Care Med*. 2018;197(3):400–403.
35. Patel ARC, Donaldson GC, Mackay AJ, Wedzicha JA, Hurst JR. The impact of ischemic heart disease on symptoms, health status, and exacerbations in patients with COPD. *Chest*. 2012;141(4):851–857.
36. Make BJ, Eriksson G, Calverley PM, et al. A score to predict short-term risk of COPD exacerbations (SCOPEX). *Int J Chron Obstruct Pulmon Dis*. 2015;10:201–209.
37. Echevarria C, Steer J, Heslop-Marshall K, et al. The pearl Score predicts 90-day readmission or death after hospitalisation for acute exacerbation of COPD. *Thorax*. 2017;72(8):686–693.
38. Murphy PB, Rehal S, Arbane G, et al. Effect of home noninvasive ventilation with oxygen therapy vs oxygen therapy alone on hospital readmission or death after an acute COPD exacerbation. *JAMA*. 2017; 317(21):2177–2186.
39. Polverino E, Goeminne PC, McDonnell MJ, et al. European Respiratory Society guidelines for the management of adult bronchiectasis. *Eur Respir J*. 2017;50(3):1700629.
40. Albert RK, Connett J, Bailey WC, et al. Azithromycin for prevention of exacerbations of COPD. *N Engl J Med*. 2011;365(8):689–698.
41. Kelly C, Chalmers JD, Crossingham I, et al. Macrolide antibiotics for bronchiectasis. *Cochrane Database Syst Rev*. 2018;3:CD012406.
42. Bhatt SP, Wells JM, Kinney GL, et al. β -Blockers are associated with a reduction in COPD exacerbations. *Thorax*. 2016;71(1):8–14.
43. du Q, Sun Y, Ding N, Lu L, Chen Y. Beta-blockers reduced the risk of mortality and exacerbation in patients with COPD: a meta-analysis of observational studies. *PLoS One*. 2014;9(11):e113048.
44. Rutten FH, Zuithoff NP, Hak E, Grobbee DE, Hoes AW. Beta-blockers may reduce mortality and risk of exacerbations in patients with chronic obstructive pulmonary disease. *Arch Intern Med*. 2010;170(10): 880–887.
45. Couillard S, Larivée P, Courteau J, Vanasse A. Eosinophils in COPD exacerbations are associated with increased readmissions. *Chest*. 2017; 151(2):366–373.
46. Effing TW, Kerstjens HAM, Monninkhof EM, et al. Definitions of exacerbations. *Chest*. 2009;136(3):918–923.



International Journal of COPD

Dovepress

Publish your work in this journal

The International Journal of COPD is an international, peer-reviewed journal of therapeutics and pharmacology focusing on concise rapid reporting of clinical studies and reviews in COPD. Special focus is given to the pathophysiological processes underlying the disease, intervention programs, patient focused education, and self management protocols.

This journal is indexed on PubMed Central, MedLine and CAS. The manuscript management system is completely online and includes a very quick and fair peer-review system, which is all easy to use. Visit <http://www.dovepress.com/testimonials.php> to read real quotes from published authors.

Submit your manuscript here: <http://www.dovepress.com/international-journal-of-chronic-obstructive-pulmonary-disease-journal>